

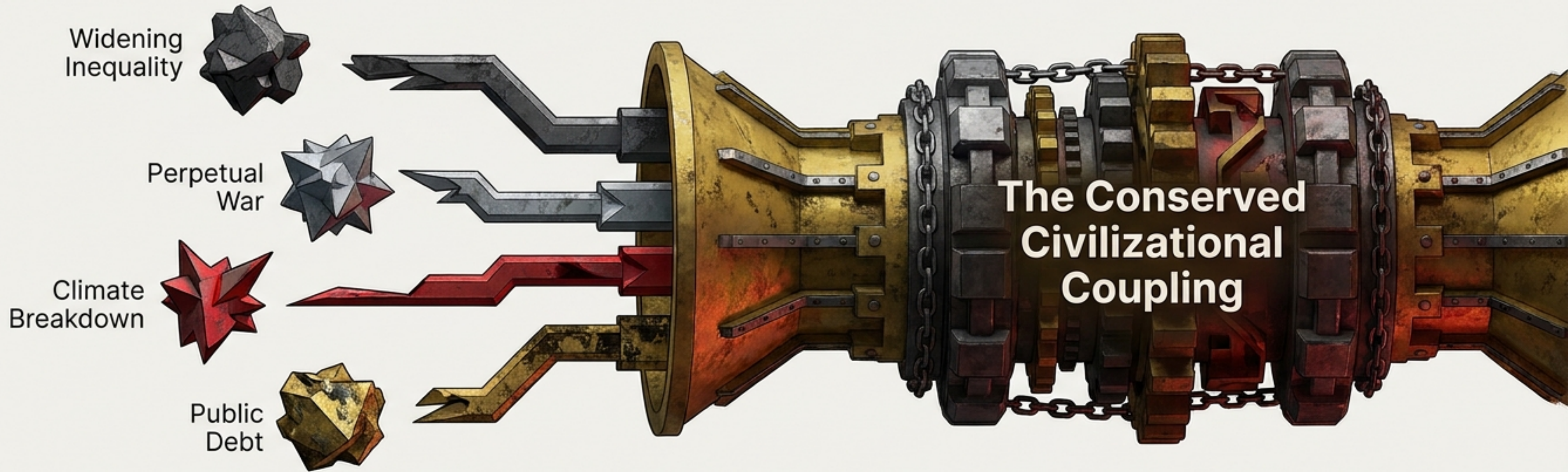
Beyond the Midas-MARS Trap

Life-Coherent Security and the End of Claim-Protected Militarism



A synthesis of the work of Dr. Bichara Sahely

Symptoms of a Single Architecture

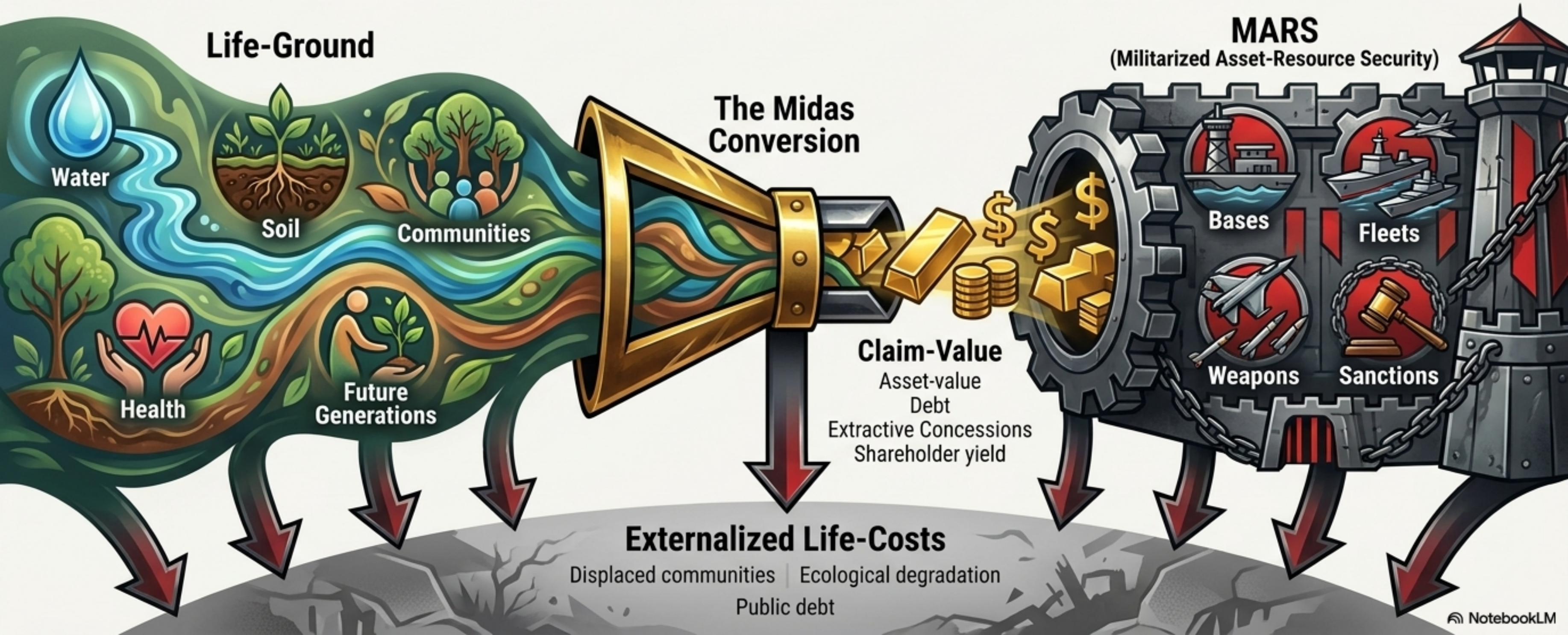


Humanity is living through a convergence of crises usually analyzed in isolation. They are better understood as expressions of a deeper, conserved civilizational coupling where **money-value, asset-value, and corporate claims become sovereign over the living conditions from which all real value arises.**

The question is not whether security matters.
The question is: **what kind of security is being conserved?**

The Anatomy of the Trap

Midas converts living relations into claimable abstractions. MARS organizes coercive power to protect those claims against life-ground correction.



Two Different Objects. Two Different Logics.

Common Defense



What is Protected?

Shared Life-Capacity (Persons, ecosystems, democracy, future generations).

Means of Protection

Nonviolent prevention, diplomacy, public goods, ecological stewardship.

Who Pays?

Shared costs through fair taxation and democratic priority-setting.

Consequences

Resilient communities, ecological integrity, intergenerational justice.



Claim-Protection (MARS)

Concentrated Claims (Assets, supply routes, concessions, geopolitical access).

Military force, bases, surveillance, sanctions, coercive diplomacy.

Taxpayers, workers, soldiers, ecosystems, and future generations.

Perpetual conflict, debt, cultural trauma, ecological breakdown.

A defense expenditure is a public good only insofar as it protects shared life-capacity. When it protects concentrated claims at public cost, it is a private subsidy.

The Metrics of Misallocation

Midas-MARS Trap

\$2.887 Trillion: World military expenditure in 2025 (11th consecutive year of real growth).

41% Rise: Global military spending increase over the decade 2016-2025.

5.5%: Estimated global greenhouse gas emissions from the world's militaries.

\$1.58 Trillion: Projected sustainment costs for the F-35 program alone.

Imbalance Scale

Life-Ground

\$4 Trillion: Annual SDG financing gap.

\$93 Billion: Annual cost to help end global hunger by 2030.

\$114 Billion: Annual cost for universal safe drinking water in 140 countries.

**The present trajectory conserves death-provisioning at a planetary scale.
We are funding organized threat more reliably than organized care.**

The Insecurity Blanket

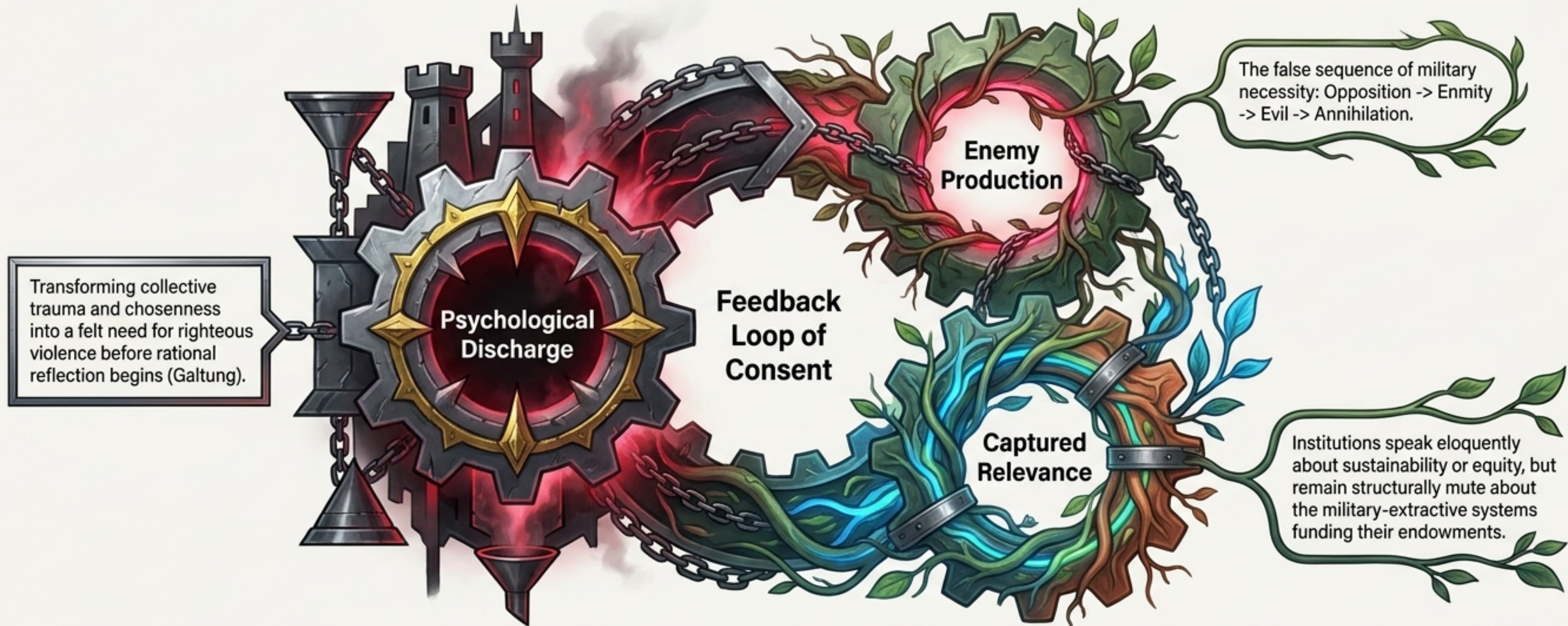
The trap persists because it provisions. Militarism has embedded itself into the everyday ecology of institutional survival.

A weapons system is not merely a weapon; it is a university grant, a local tax base, a pension return, and a family income.



Moral critique alone fails because it attacks the very systems people rely on to survive.

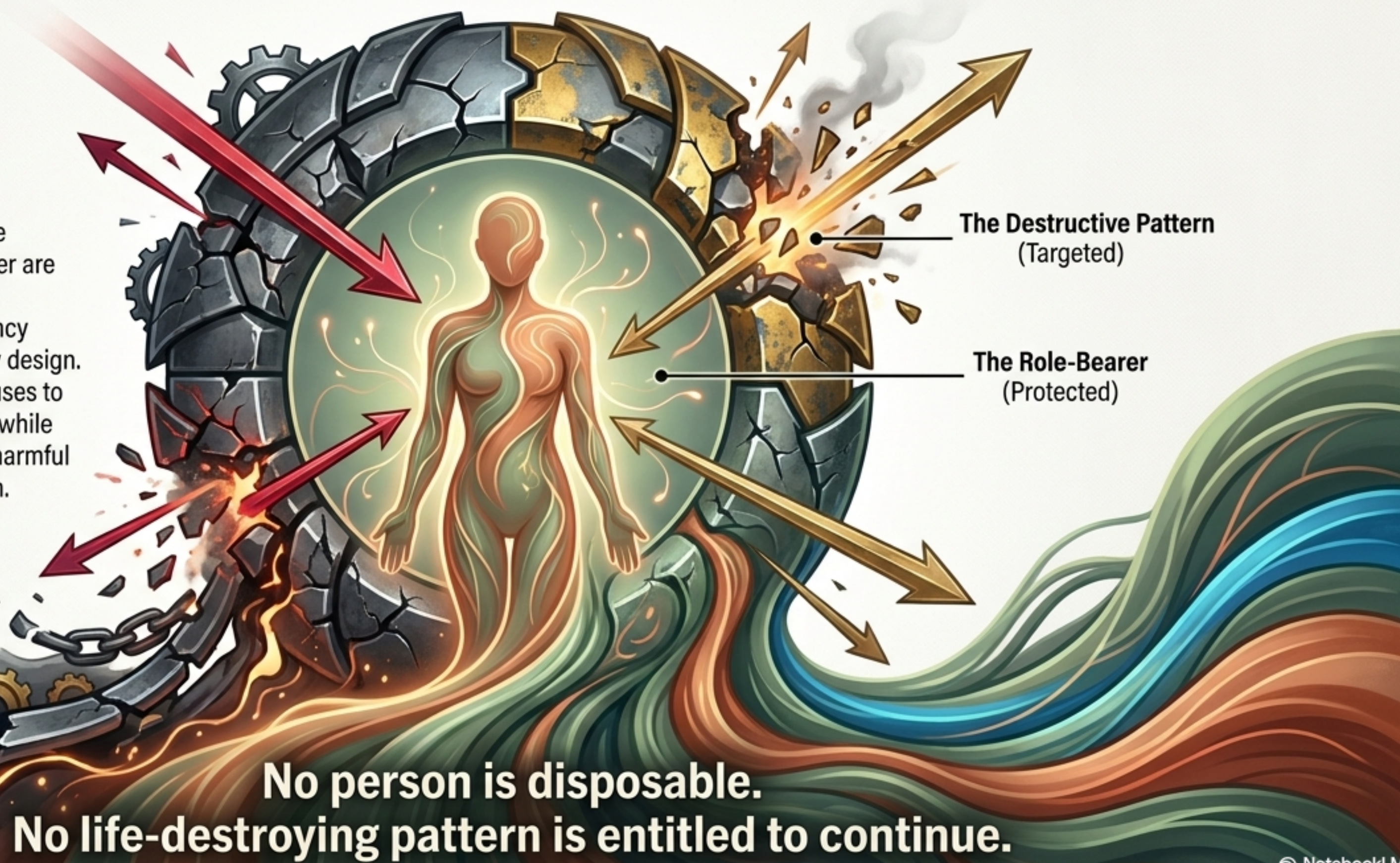
The Psychopolitics of Consent



The Midas-MARS Trap survives not just by force, but by pre-emptively capturing what feels necessary, righteous, and respectable.

The Ethical Pivot: From Persons to Patterns

The worker, the soldier, the engineer, and the pensioner are not the enemy. They are participants in a dependency ecology they did not freely design. Life-coherent defense refuses to make persons disposable while relentlessly targeting the harmful patterns that capture them.



The Destructive Pattern
(Targeted)

The Role-Bearer
(Protected)

**No person is disposable.
No life-destroying pattern is entitled to continue.**

The Economics of Life-Provisioning

Jobs created per \$1 Billion invested:



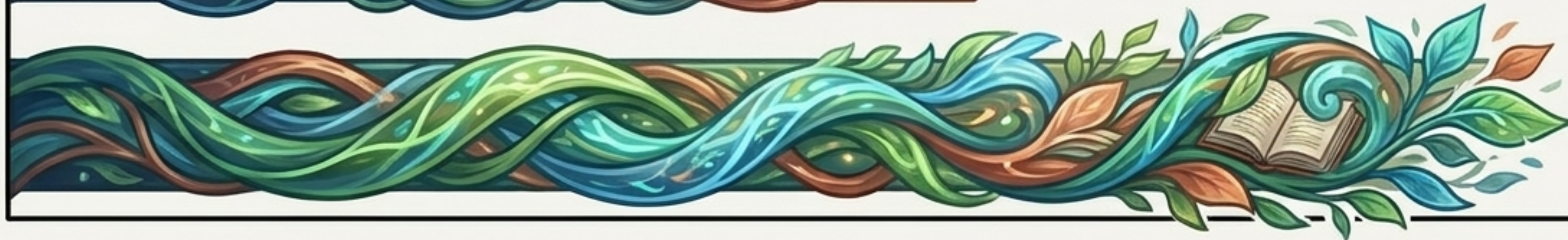
Military: 11,200 jobs



Clean Energy:
16,800 jobs



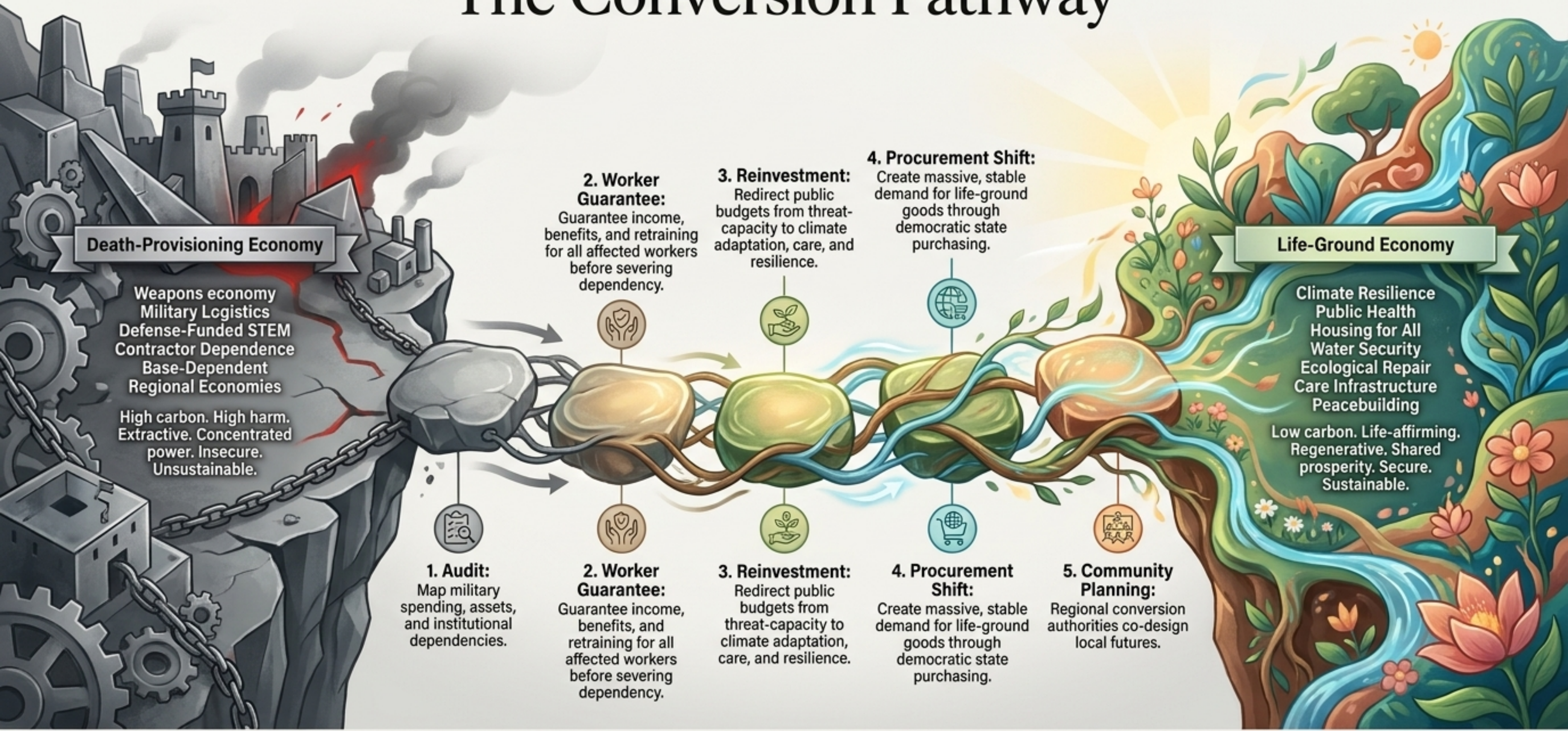
Healthcare:
17,200 jobs



Education:
26,700 jobs

The choice is not between jobs and peace. **The choice is between fewer death-provisioning jobs and more life-provisioning jobs.** Conversion is not the destruction of work; **it is the liberation of human capacity from a death-serving niche.**

The Conversion Pathway

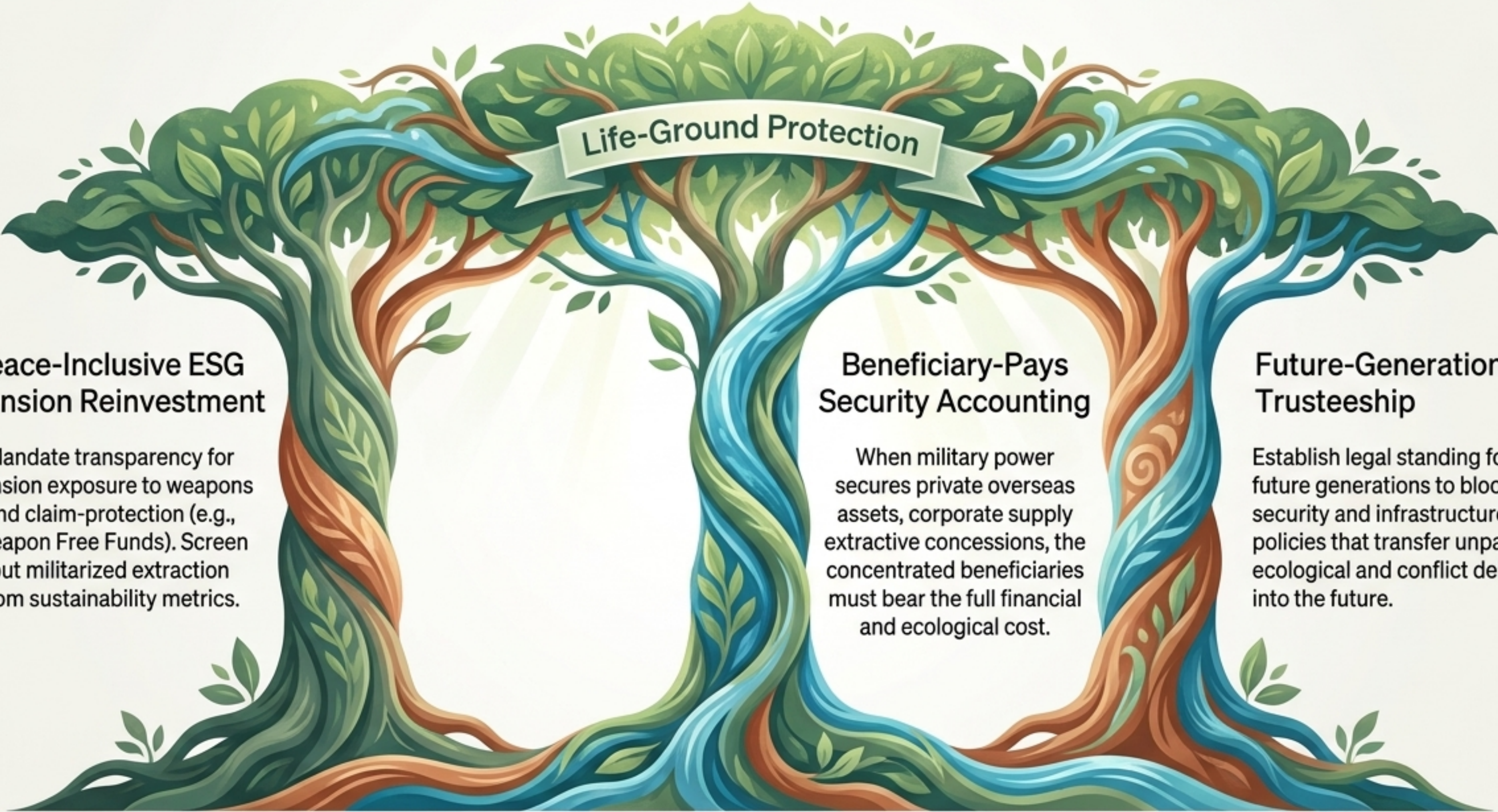


Disarmament removes capacity for harm. Conversion redirects capacity toward life. Both are required.

The Life-Coherent Coupling Audit



Institutional Architecture for Conversion



Life-Ground Protection

Peace-Inclusive ESG & Pension Reinvestment

Mandate transparency for pension exposure to weapons and claim-protection (e.g., Weapon Free Funds). Screen out militarized extraction from sustainability metrics.

Beneficiary-Pays Security Accounting

When military power secures private overseas assets, corporate supply extractive concessions, the concentrated beneficiaries must bear the full financial and ecological cost.

Future-Generation Trusteeship

Establish legal standing for future generations to block security and infrastructure policies that transfer unpayable ecological and conflict debt into the future.

The Counter-Archetype: Eirene and Ploutos



Midas-MARS dictates that wealth is cursed by extraction and must be defended by endless force. The ancient archetype of Eirene and Ploutos offers the mythic reversal: Peace nurtures true Prosperity like a living child.

The alternative to the trap is not poverty or weakness. True wealth is not what survives by force; it is what grows when life is protected enough to flourish.



Security Worthy of Life

A civilization is secure not when its claims are protected at any cost, but when its life-ground can no longer be sacrificed for claims.

The transition from claim-protection to life-ground protection begins now.