

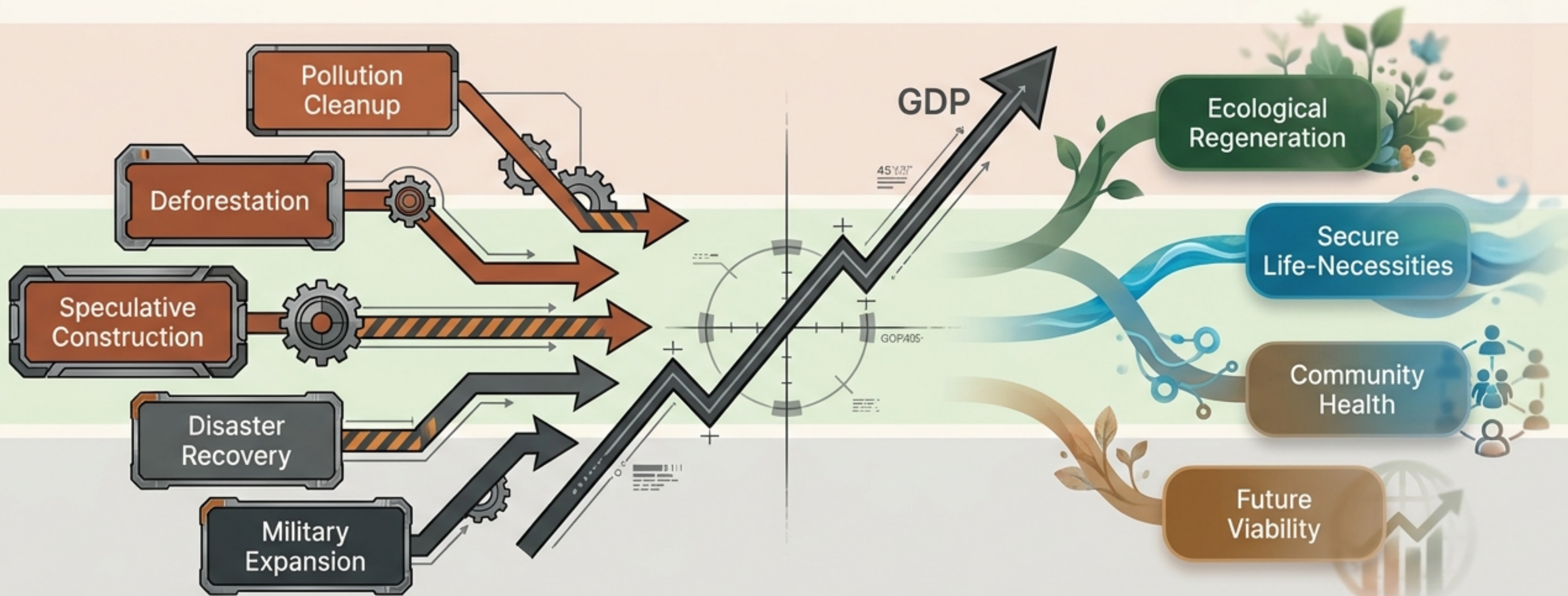
# An Economy Answerable to Life

Beyond GDP, Unequal Exchange, and the Life-Coherent Reordering of Progress.



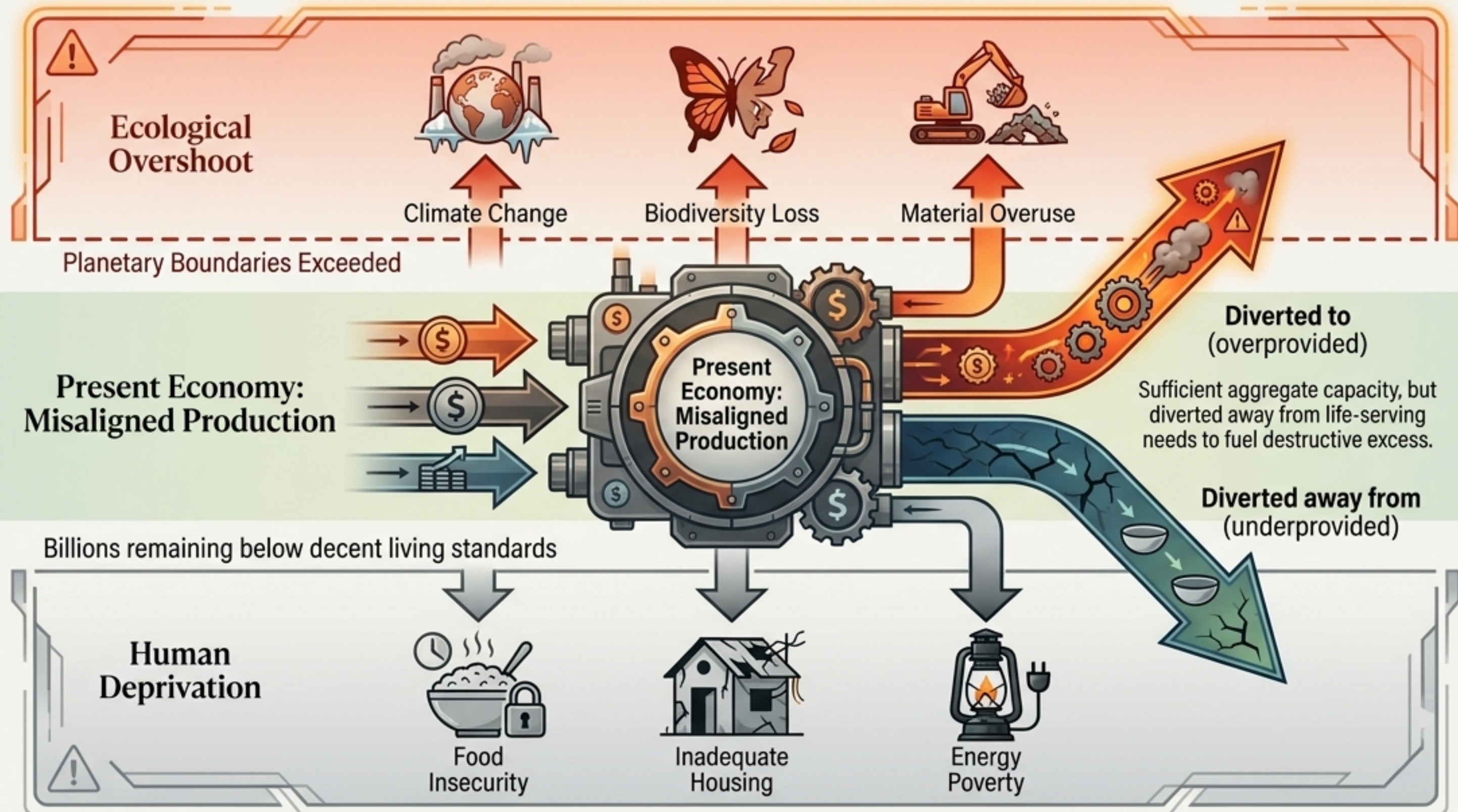
Based on the academic white paper by Dr. Bichara Sahely.

# When the Compass Ignores the Territory

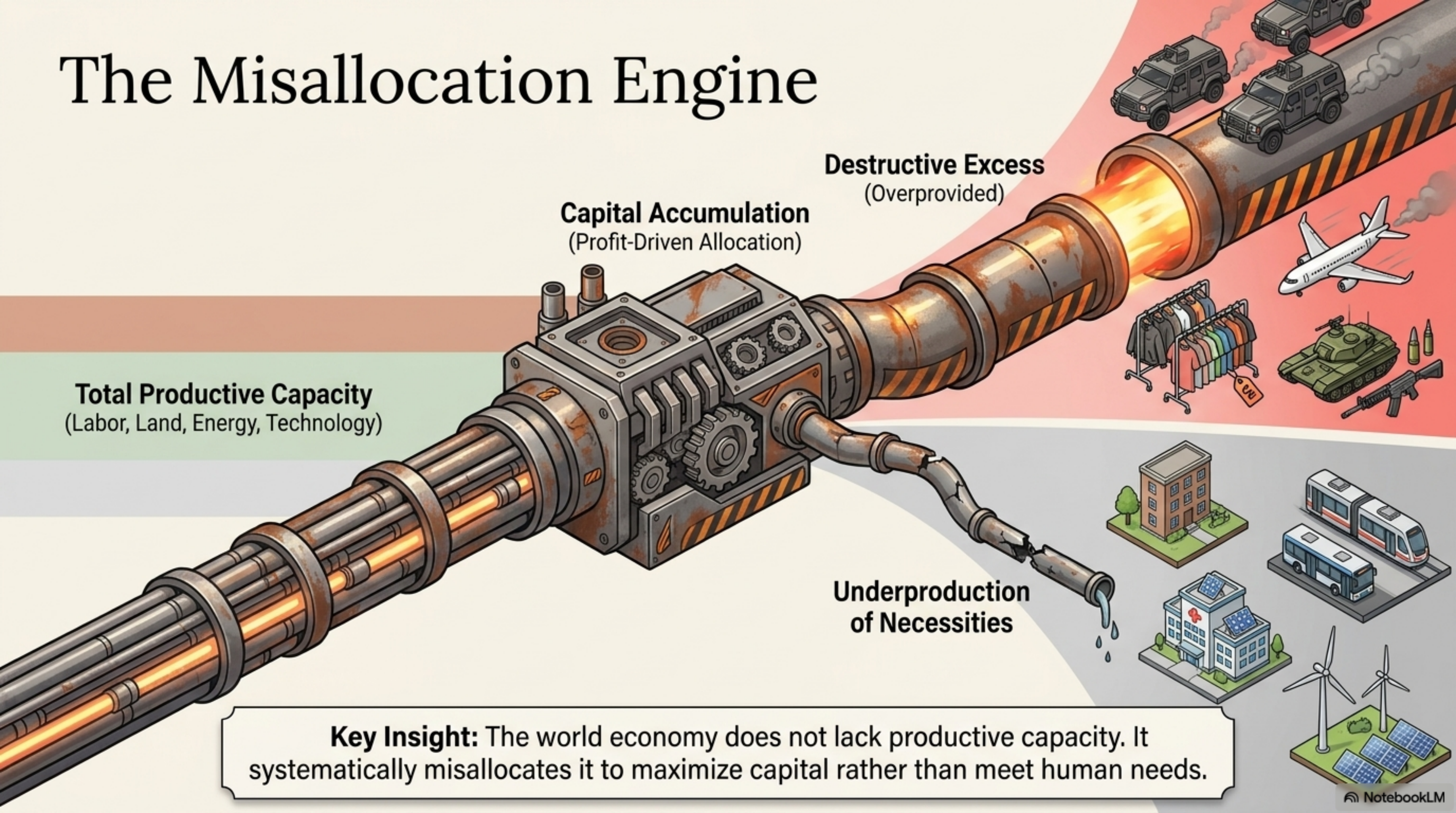


Key Insight: "GDP is not merely an incomplete metric. It is the statistical shadow of a deeper civilizational inversion: the subordination of life-capacity to monetary throughput."

# The Double Crisis of Misaligned Production



# The Misallocation Engine



**Total Productive Capacity**  
(Labor, Land, Energy, Technology)

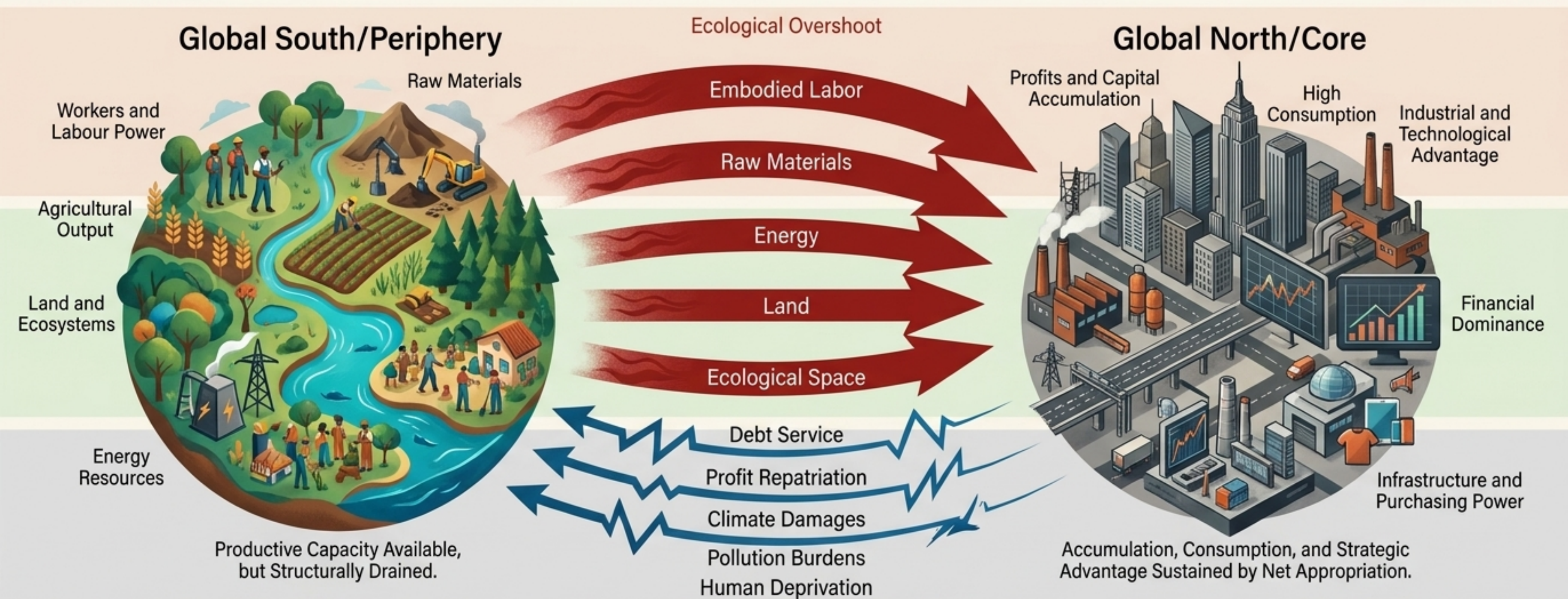
**Capital Accumulation**  
(Profit-Driven Allocation)

**Destructive Excess**  
(Overprovided)

**Underproduction**  
of Necessities

**Key Insight:** The world economy does not lack productive capacity. It systematically misallocates it to maximize capital rather than meet human needs.

# Unequal Exchange as Cross-Border Life-Drain



**Key Insight:** National prosperity cannot be judged in isolation. Real progress metrics must account for relational accountability and externalized harm.

# The Civilizational Inversion

## Money-Value Logic

**Capitalist Law of Value** → Money-value over life-value

**Unequal Exchange** → Cross-border life-drain

**Atmospheric Appropriation** → Theft of ecological space

**Structural Adjustment** → Institutional suppression of life-capacity

## Life-Value Logic

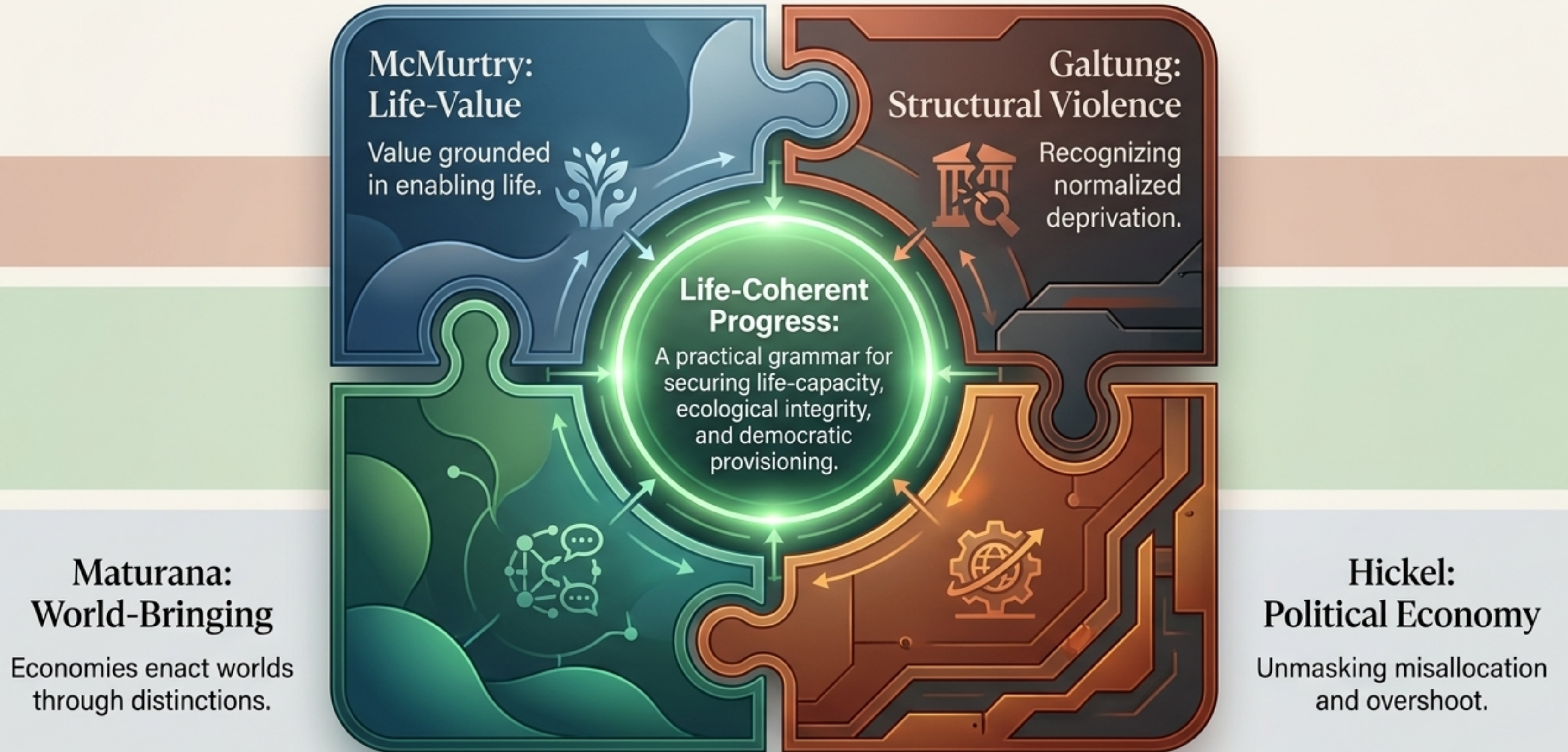
**Decent Living Standards** → Minimum life-capacity floor

**Southern Sovereignty** → Recovery of control over life-means

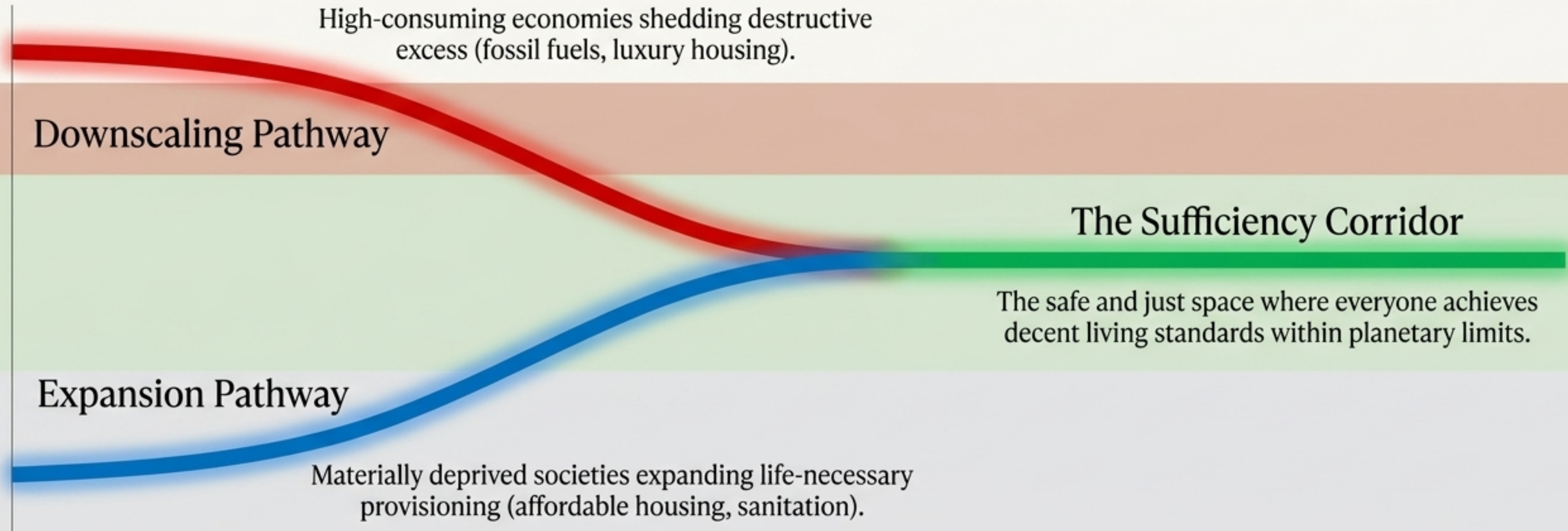
**Reparations & Debt Justice** → Repair of historical and ongoing life-loss

**Democratic Control** → Civil commons governance

# A Fourfold Grammar for Reordering Progress

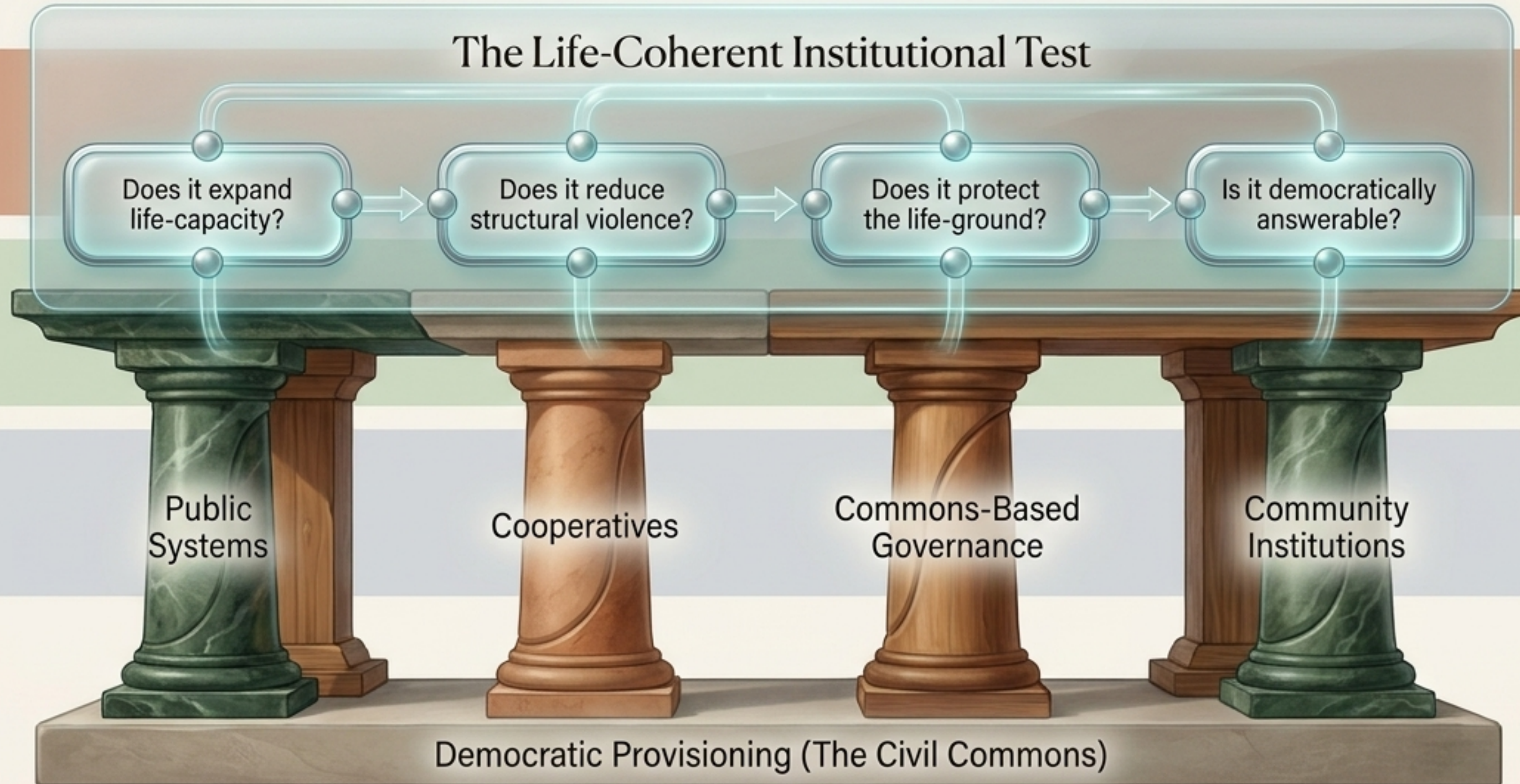


# Differentiated Convergence Toward Sufficiency



**Key Insight:** The goal is neither universal austerity nor unrestricted growth. It is “less where production destroys life, more where necessities remain unmet.”

# Dashboards Require Institutional Power

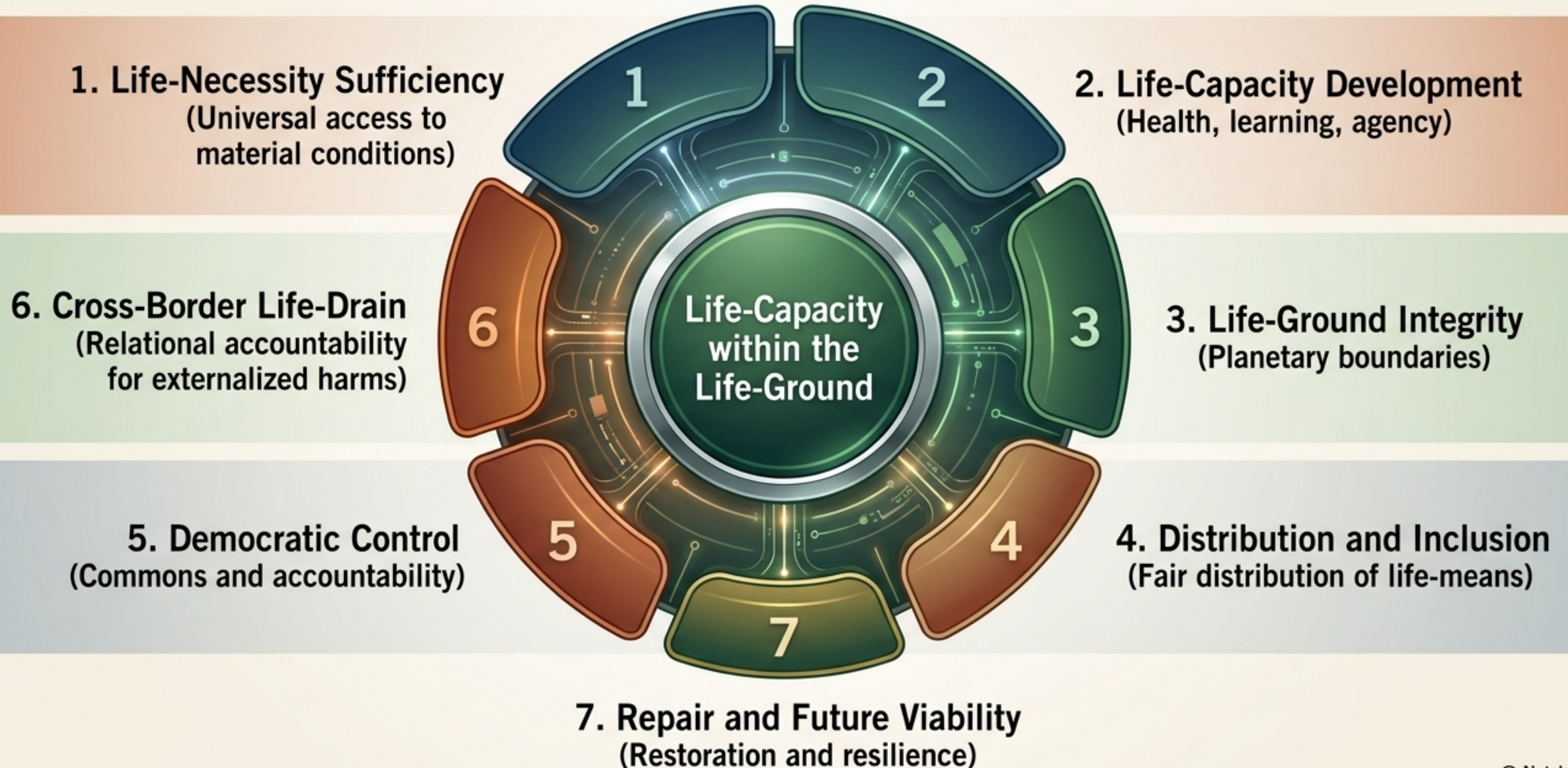


# Small Island States as Diagnostic Sites

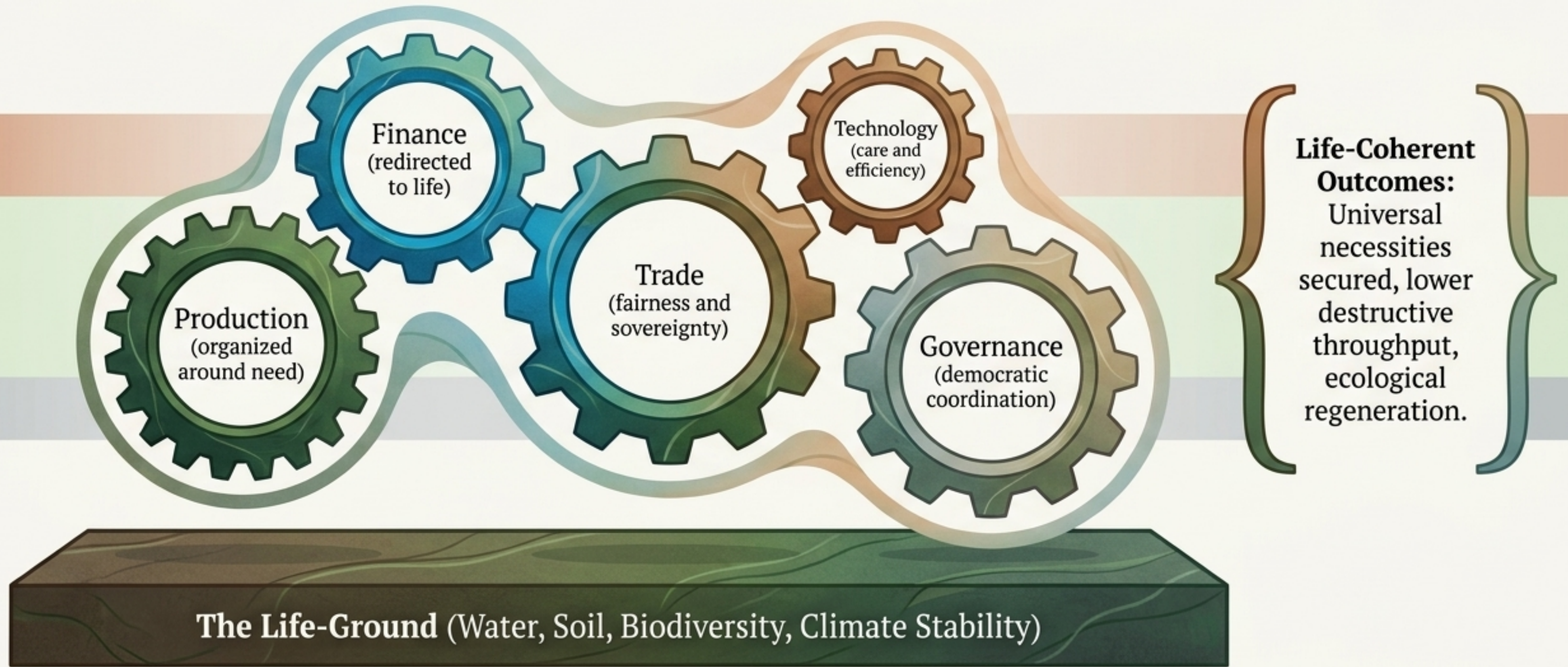


**Key Insight:** SIDS reveal the contradictions of the global order with unusual clarity because they cannot indefinitely externalize ecological and social costs.

# The 7-Domain Life-Coherent Dashboard



# Bringing Forth an Economy Answerable to Life



*Progress is not aggregate output. An economy is legitimate only insofar as it serves life-capacity, protects the life-ground, repairs life-damage, and remains democratically answerable to the ecosystems through which life continues.*