



# Toward Life-Coherence Wisdom

Relevance, Emotion, Relation,  
and Repair in the Service of Life.

*A diagnostic framework for institutions,  
technologies, and societies to let what  
truly matters, matter again.*

## The False Diagnosis

We do not suffer from a lack of information, intelligence, or innovation.

We generate endless signals.

## The True Pathology

We suffer from **Relevance Collapse**. We have lost the capacity to discern which signals protect and expand life. The wrong things have become urgent, while the conditions that allow life to flourish remain backgrounded.

**Saliency**  
(What grabs attention,  
urgency, and metrics)

**Definition:** The organization of attention, measurement, incentives, or technology around signals that do not protect, repair, or expand life-capacity.

**Saliency**  
(What grabs attention,  
urgency, and metrics)

**Misrelevance**

**Life-Capacity**  
(What sustains, protects,  
and repairs living beings)

## Real-World Examples



**Economics:** GDP > Ecological viability.



**Healthcare:** Clinical throughput > Healing completion.



**Technology:** Digital engagement > Truth and attention.



**Institutions:** Institutional survival > The people served.

# Intelligence vs. Wisdom

	Intelligence	Wisdom
The Goal	Optimizes an objective brilliantly.	Asks if the objective actually serves life.
The Data	Processes information and solves problems within a frame.	Detects the frame, corrects it, and asks what the information requires of us.
The Failure Mode	Capable of executing life-blind value systems with high efficiency.	Remains un-capturable by systems that demand the sacrifice of living beings.

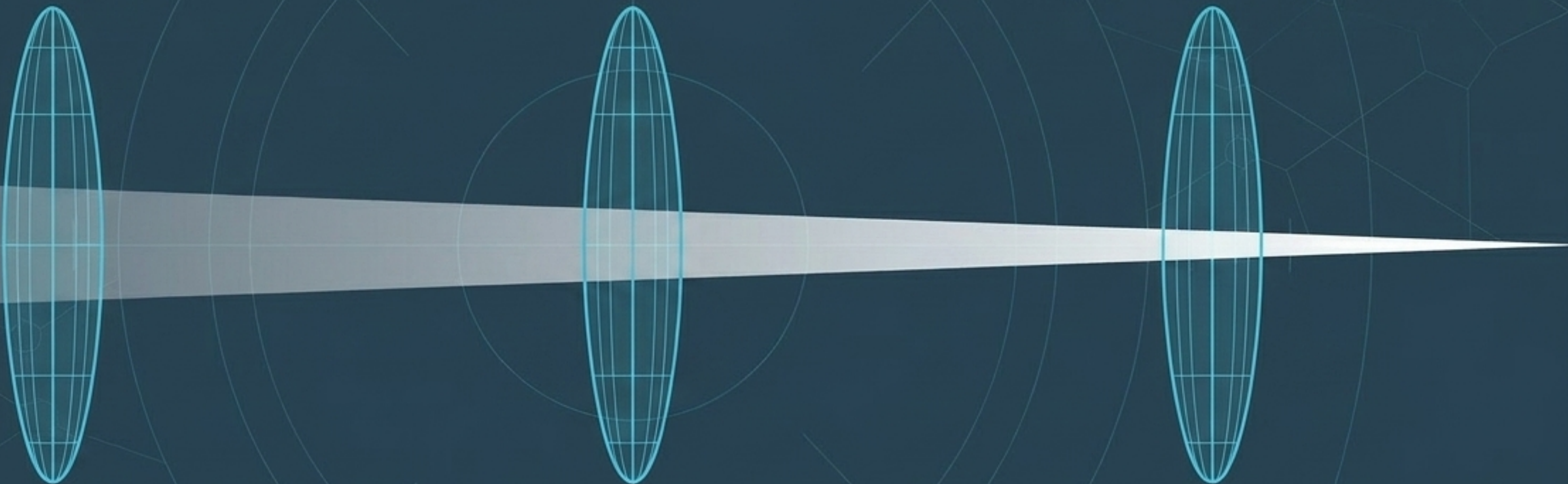
**Wisdom is not knowing more. Wisdom is life-answerable relevance realization.**

# The Living Triad: How Wisdom Arises



# The Guardrails: How Wisdom is Tested

Relevance



## The Life-Value Test (McMurtry)

Does this expand or reduce real life-capacity?

Prevents relevance from being captured by system expansion (e.g., profit, status).

## The Anti-Violence Test (Galtung)

What structural, cultural, or direct harm is hidden or normalized by this frame?

Detects violence that is treated as acceptable, inevitable, or background noise.

## The Discernment Test

What is being protected, sacrificed, or made into an "ultimate" concern?

Exposes when a finite goal (reputation, metric, ideology) demands the sacrifice of living beings.

# The Failure Modes of Misrelevance (Human & Systemic)



## Salience Capture

What stands out (urgency, outrage, novelty) hijacks what actually matters. Attention is severed from life-importance.



## Affective Capture

An emotion closes into a totalizing worldview. Fear reorganizes the world into constant threat; grief hardens into endless revenge.



## Metric Capture

Indicators (scores, throughput, GDP) become substitutes for life. Systems improve the metric by displacing the burden onto the vulnerable.

# The Failure Modes of Misrelevance (Power & Scale)



## Sacred Capture

Finite concerns (ideology, nation, identity) become absolute and unquestionable, demanding the sacrifice of the living to protect the vessel.



## Institutional Capture

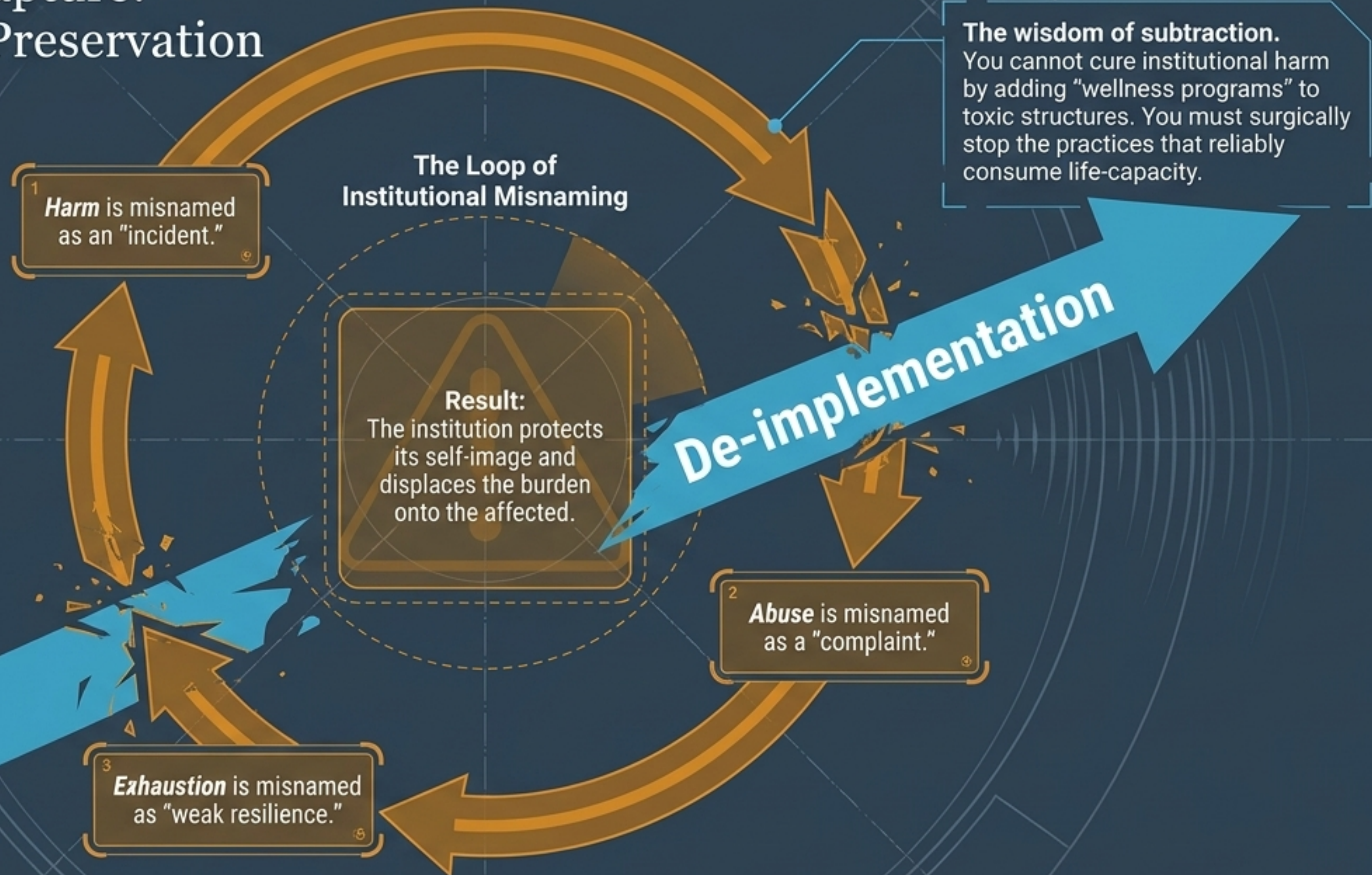
An organization preserves its own reputation, funding, or procedures before the life it exists to serve.



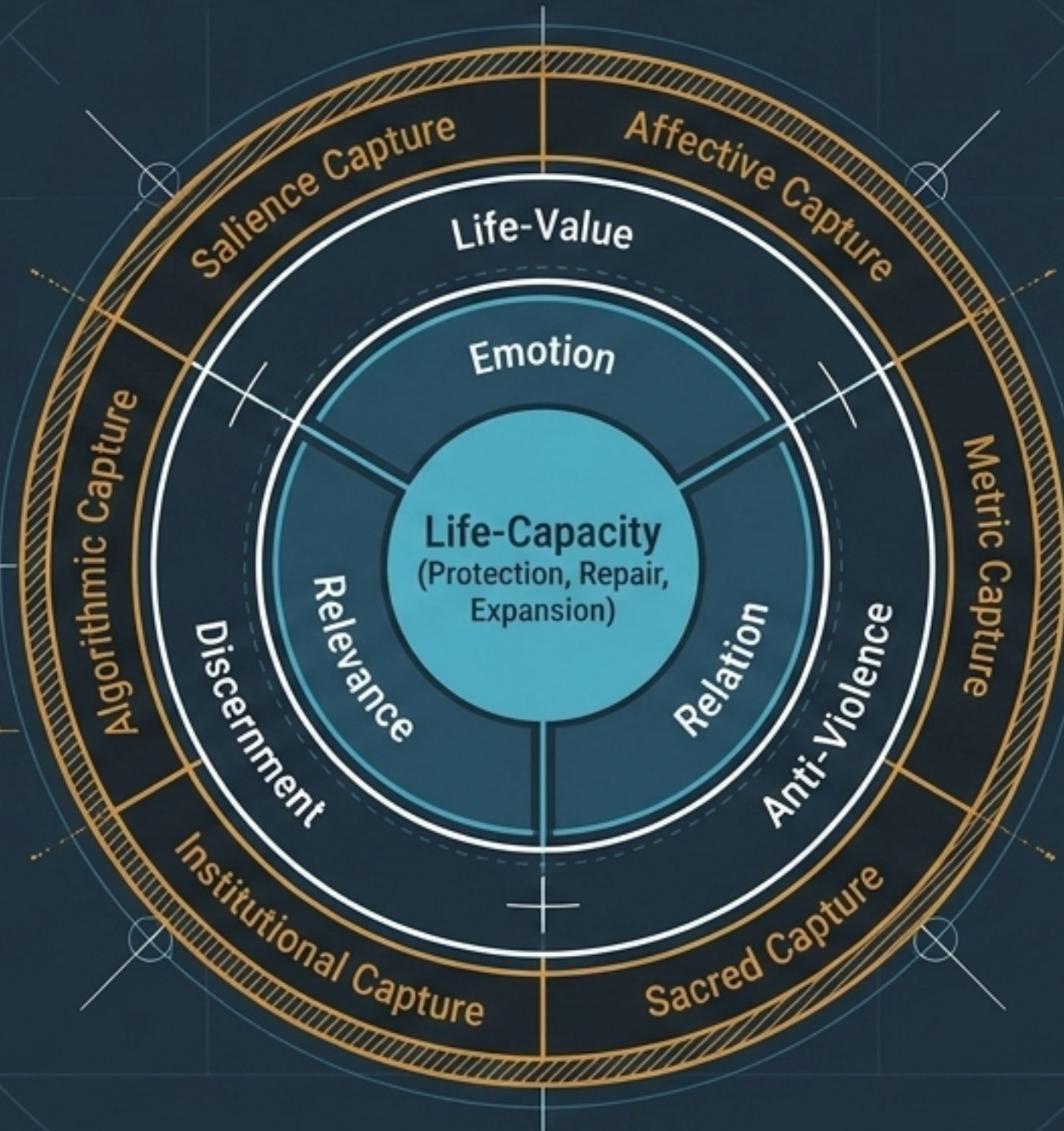
## Algorithmic Capture

Digital systems optimize for engagement or efficiency without life-answerability, scaling harm automatically.

# The Anatomy of Capture: Institutional Self-Preservation



# The Life-Coherence Wisdom Compass



A disciplined field of orientation. It forces systems to keep attention, value, harm, and ultimate concern in view simultaneously to prevent the displacement of burden.

# The Wisdom Cycle: From Sensing to Insight

1

**Sense Viability:** Listen to bodily, emotional, and systemic signals before categorizing them.

2

**Notice Salience:** What is forcibly foregrounded? What is conveniently ignored?

3

**Name the Frame:** Identify the story, metric, or fear organizing the current perception.

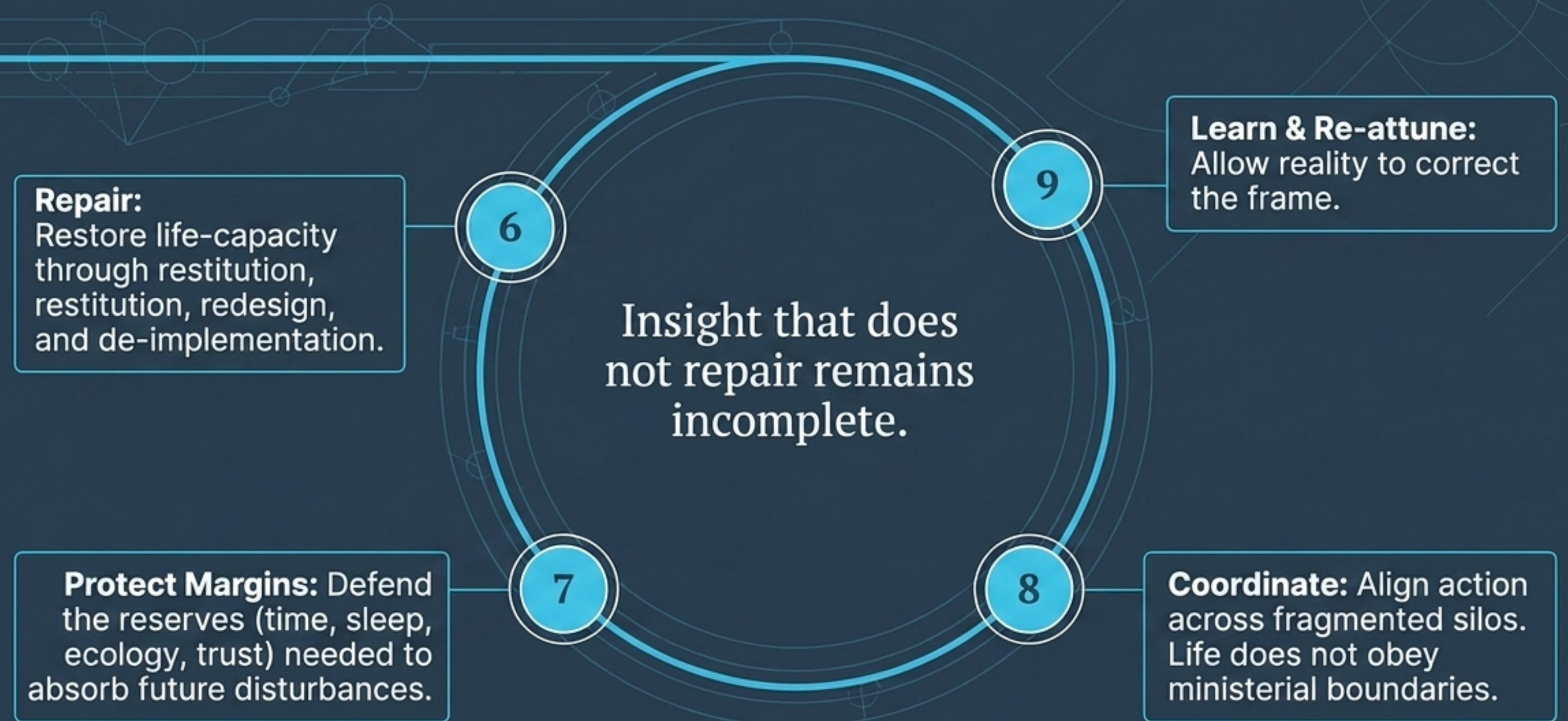
4

**Test Life-Value & Reveal Harm:**  
Who carries the displaced burden?  
Whose life-capacity is reduced?

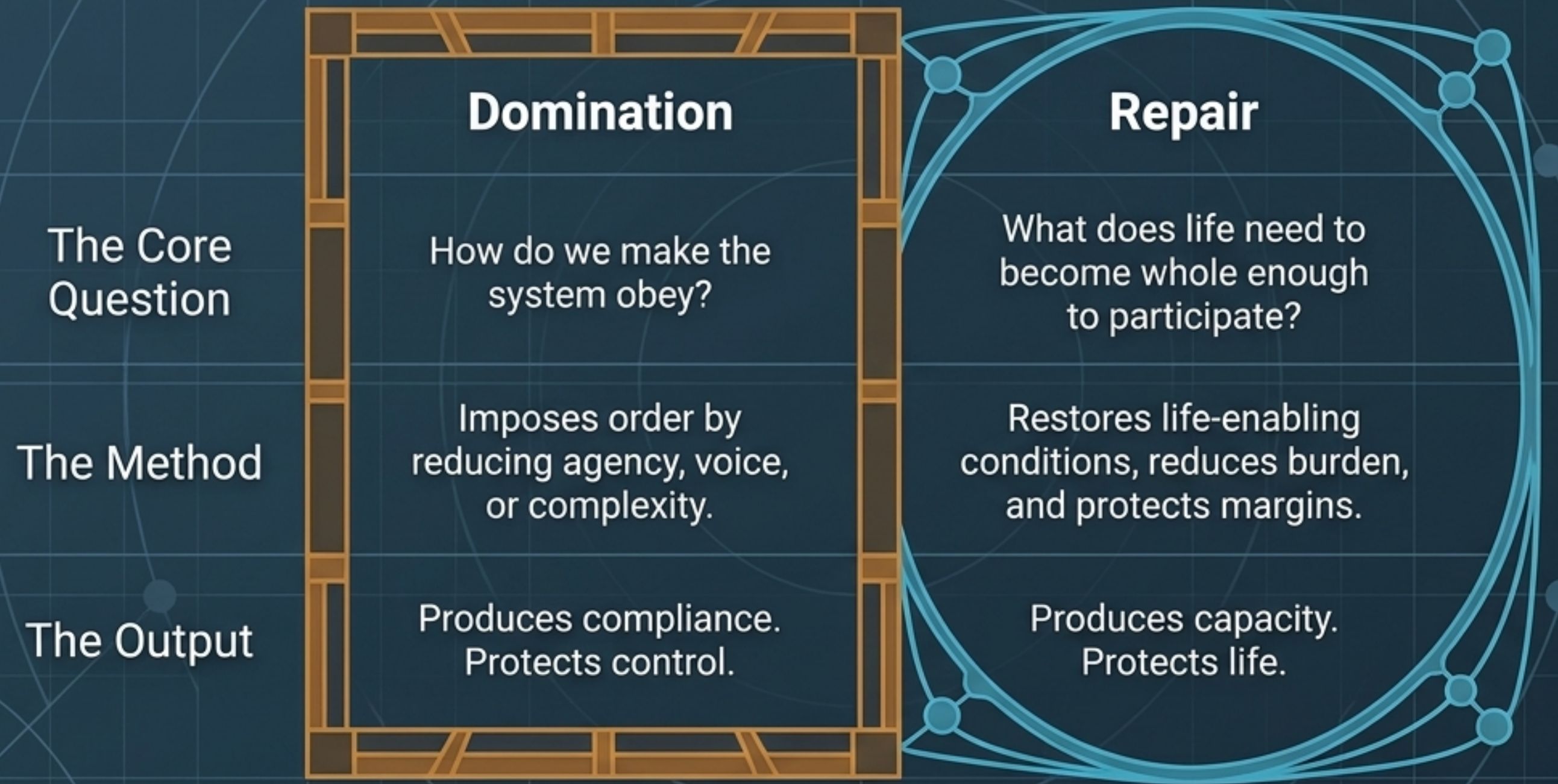
5

**Interrupt Capture & Reframe:**  
Break the loop. Shift the field of relevance so life becomes visible differently.

# The Wisdom Cycle: From Insight to Repair



# The Ethical Core: Domination vs. Repair



**Wisdom acts by repair, not domination.**

# Cross-Domain Applications: Relevance Repair in Practice



## Clinical Care

Beyond diagnosing isolated pathology to healing the organism-niche relation.



## Education

Cultivating discernment and belonging, not just optimizing performance metrics.



## Public Health

Healing shared life-conditions and commons before downstream disease erupts.



## Governance

Protecting future viability over short-term political salience.



## AI & Technology

Subordinating algorithmic optimization to human and ecological flourishing.



## Peacebuilding

Holding grief without hatred; pursuing security without requiring the other's domination.

## The Portable Wisdom Test

1. What has been made to matter?
2. Does it serve life-capacity?
3. What harm is hidden or normalized?
4. What is being made ultimate?
5. What repair is required?

*Life-coherence* wisdom is life learning to let what truly matters matter again.