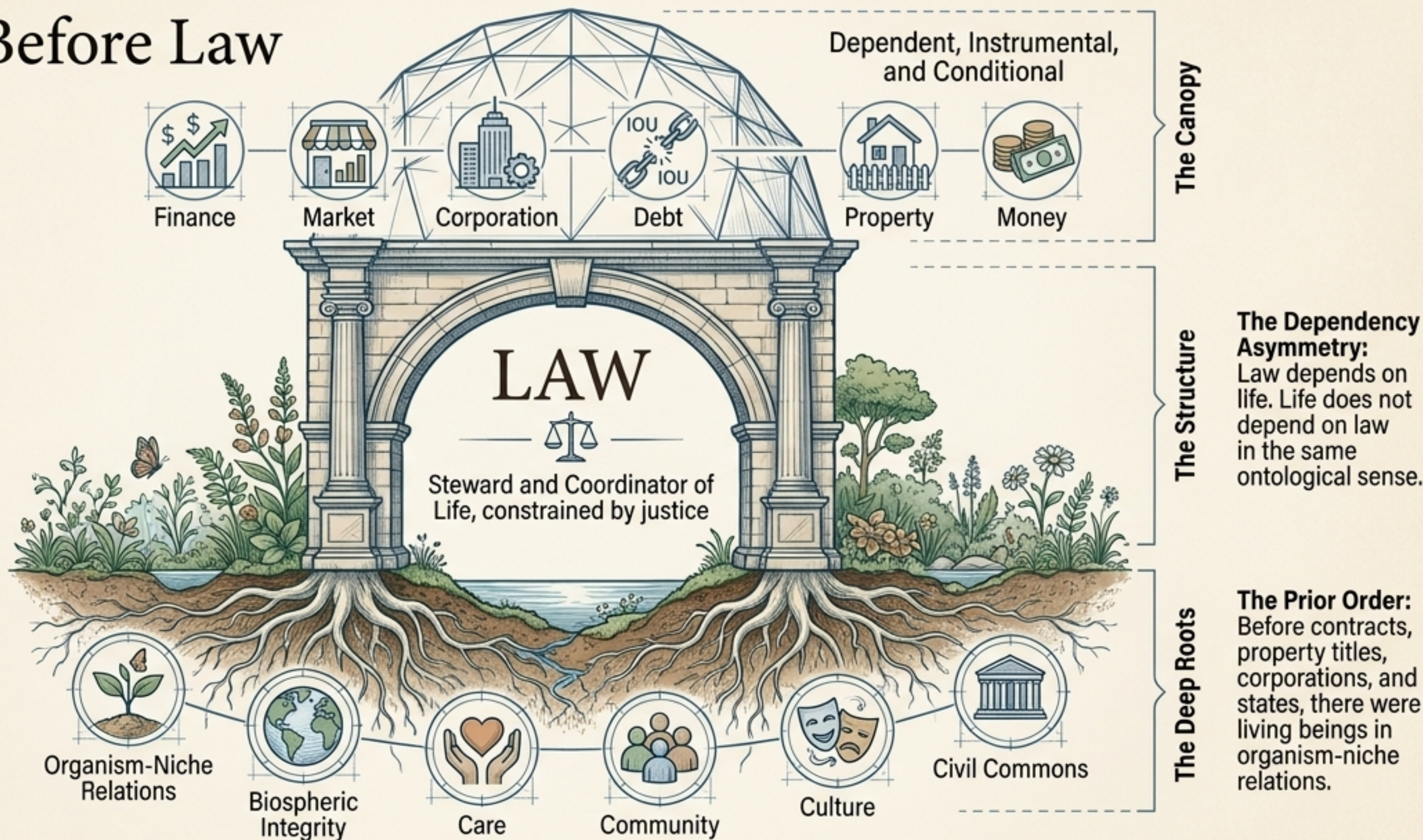


Life-Coherent Jurisprudence

Repairing the Great Inversion



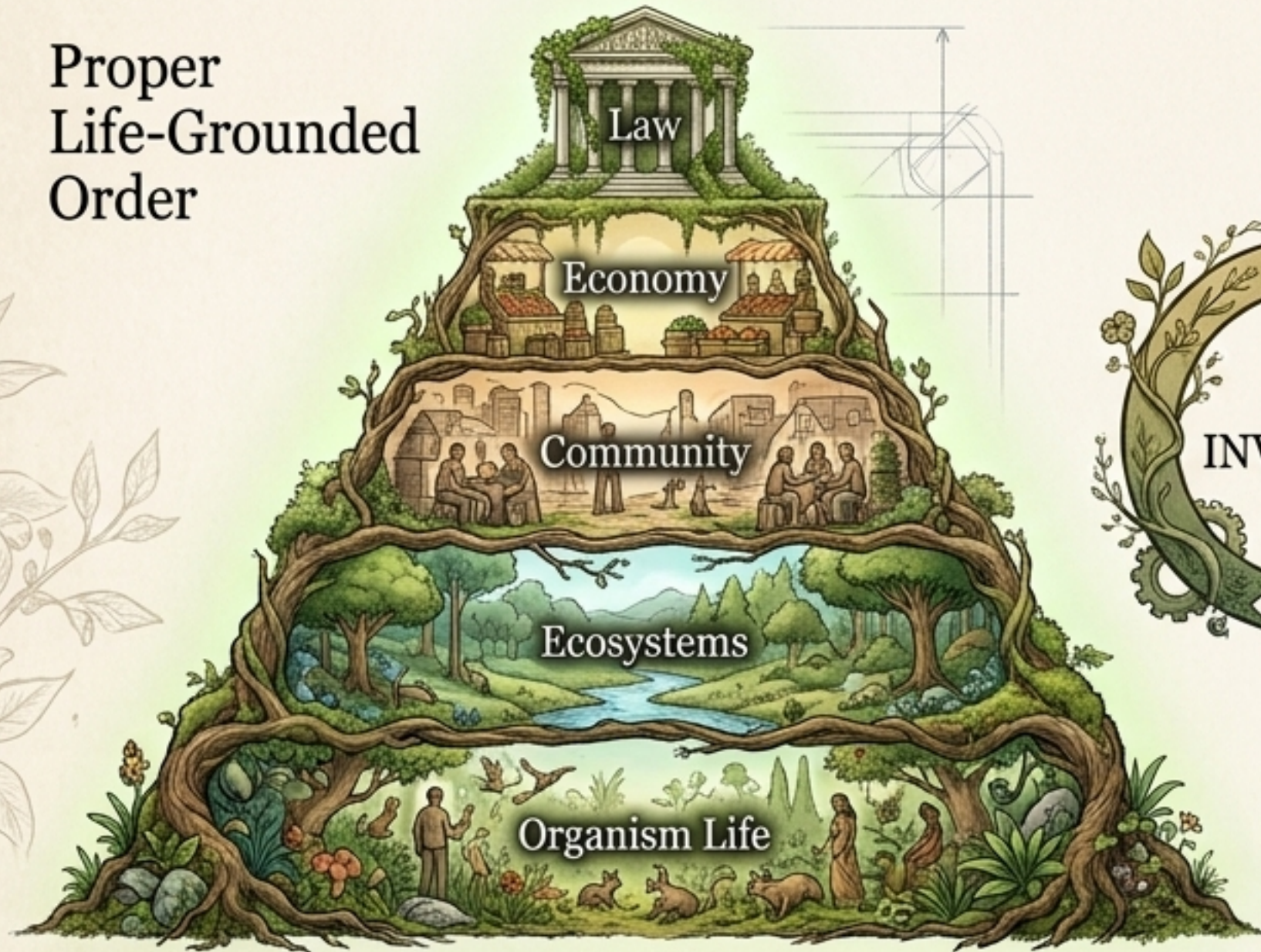
The Foundational Premise: Life Came Before Law



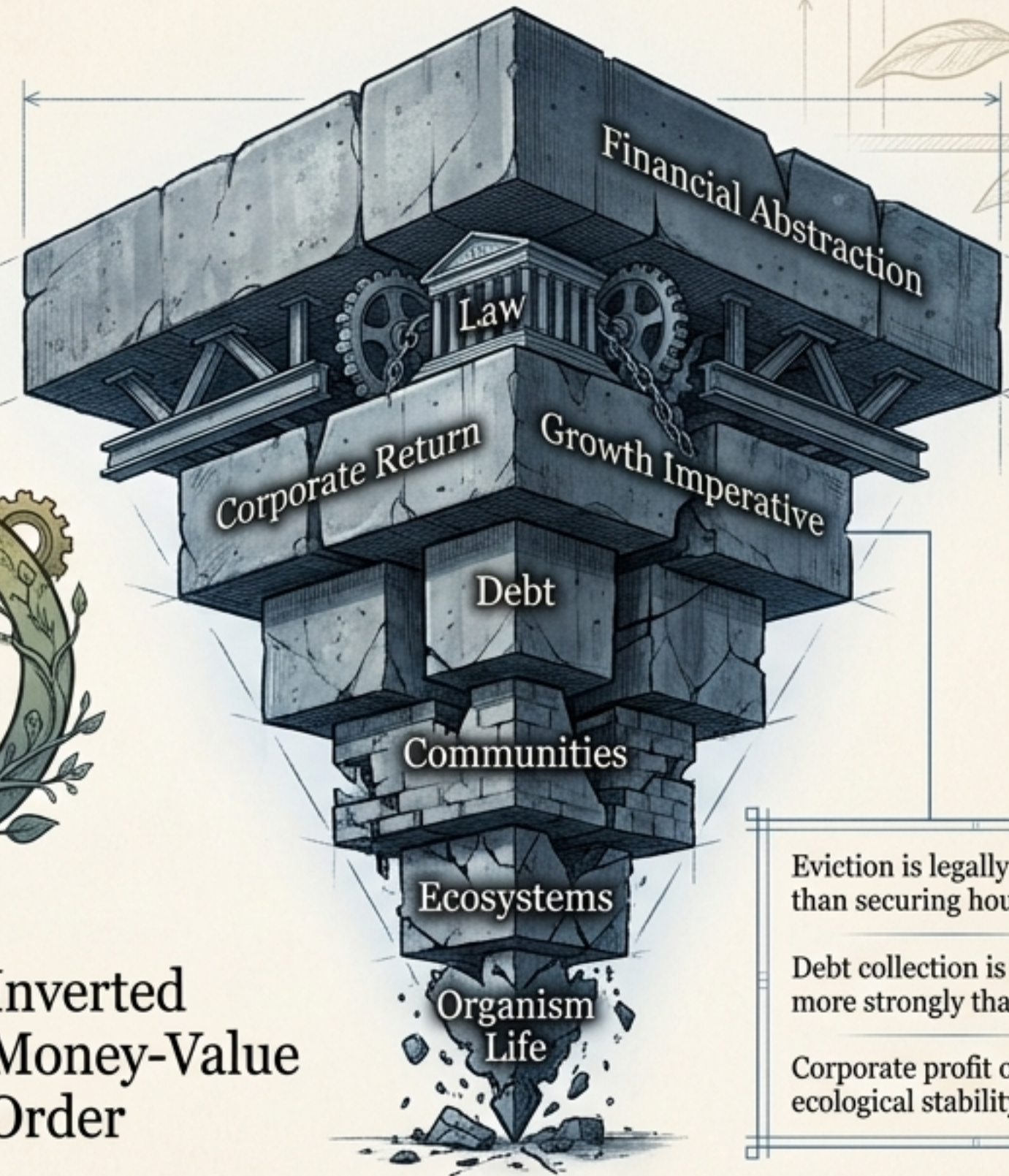
The Rule of Legitimacy: Legal legitimacy depends entirely on whether later symbolic coordinations remain in service to the life-ground.

The Great Inversion: When Money Became the Master

Proper
Life-Grounded
Order



Inverted
Money-Value
Order



Eviction is legally easier
than securing housing.

Debt collection is protected
more strongly than health.

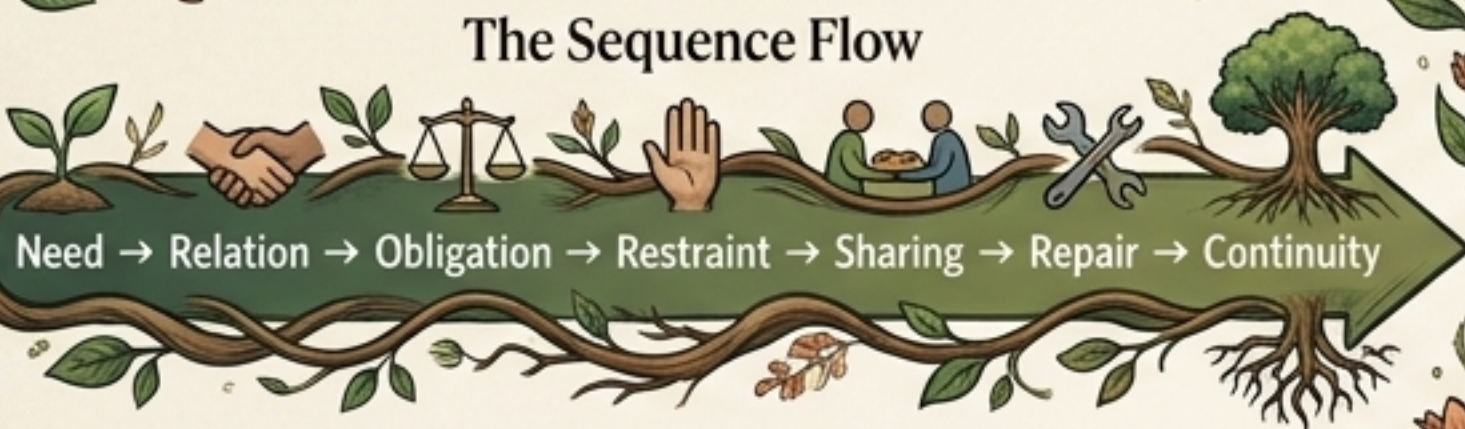
Corporate profit outranks
ecological stability.

The Great Inversion occurs when legal systems protect the enforceability of symbolic claims (property, debt, profit) more strongly than the living relations from which they were abstracted.

Two Paradigms of Coordination

Life-Sequencing

The Sequence Flow



View of Land/Ecology

Relation, memory, and stewardship.



View of Care & Need

The foundational work of social reproduction.



Definition of 'Success'

Increased life-capacity and future viability.



Money-Value Sequencing

The Sequence Flow



View of Land/Ecology

Alienable asset, resource stock, and real estate.



View of Care & Need

An unpriced externality or a monetized service cost.

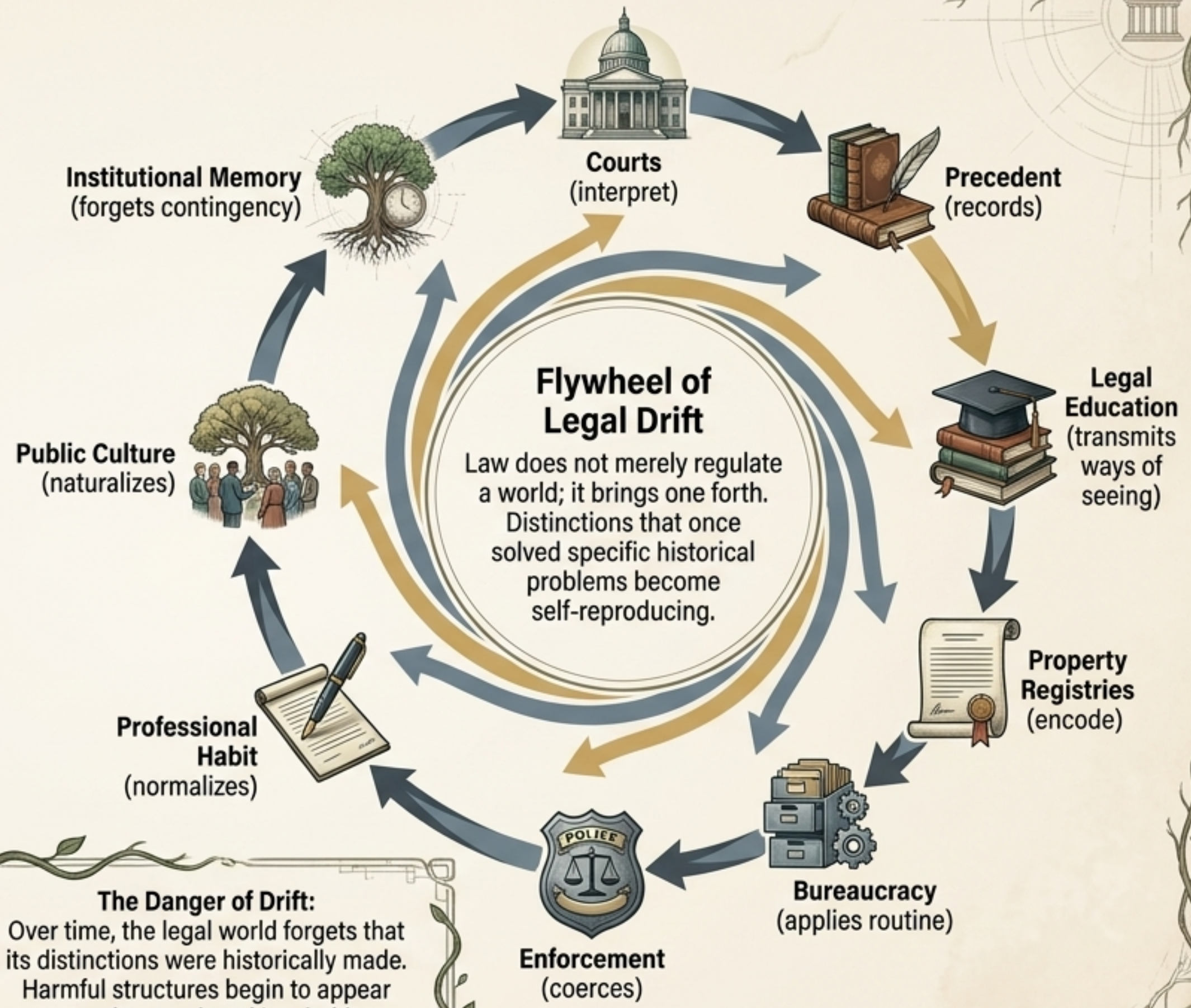


Definition of 'Success'

Increased monetary circulation, GDP, and financial return.



Law as Conserved Coordination: How Legal Worlds Reproduce

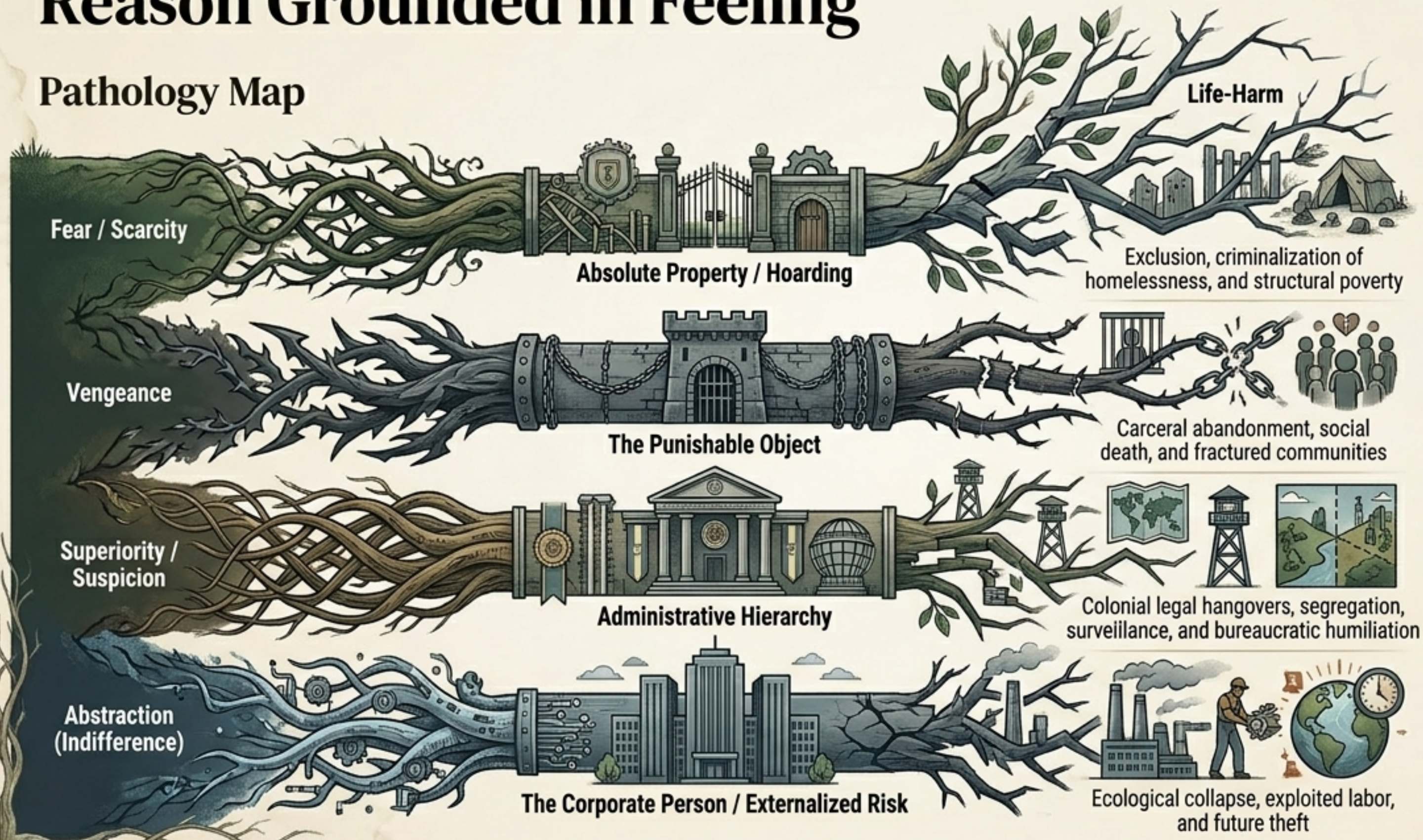


The Danger of Drift:
Over time, the legal world forgets that its distinctions were historically made. Harmful structures begin to appear natural, neutral, and inevitable.



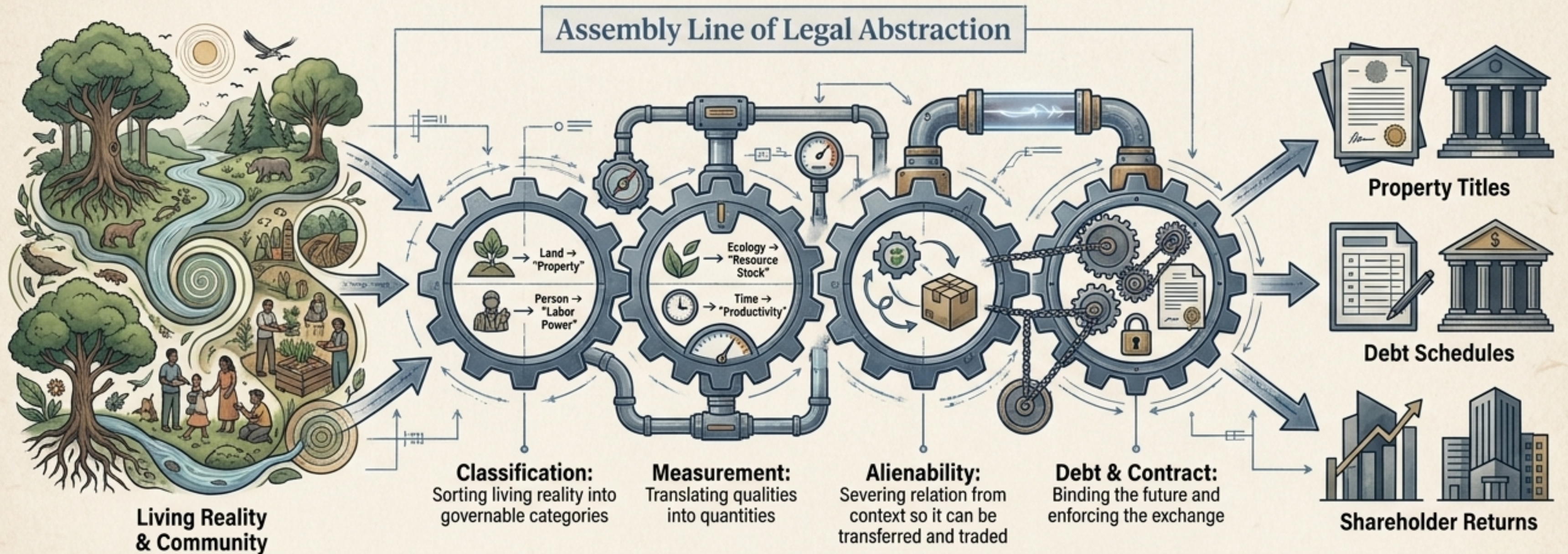
The Emotional Architecture of Law: Reason Grounded in Feeling

Pathology Map



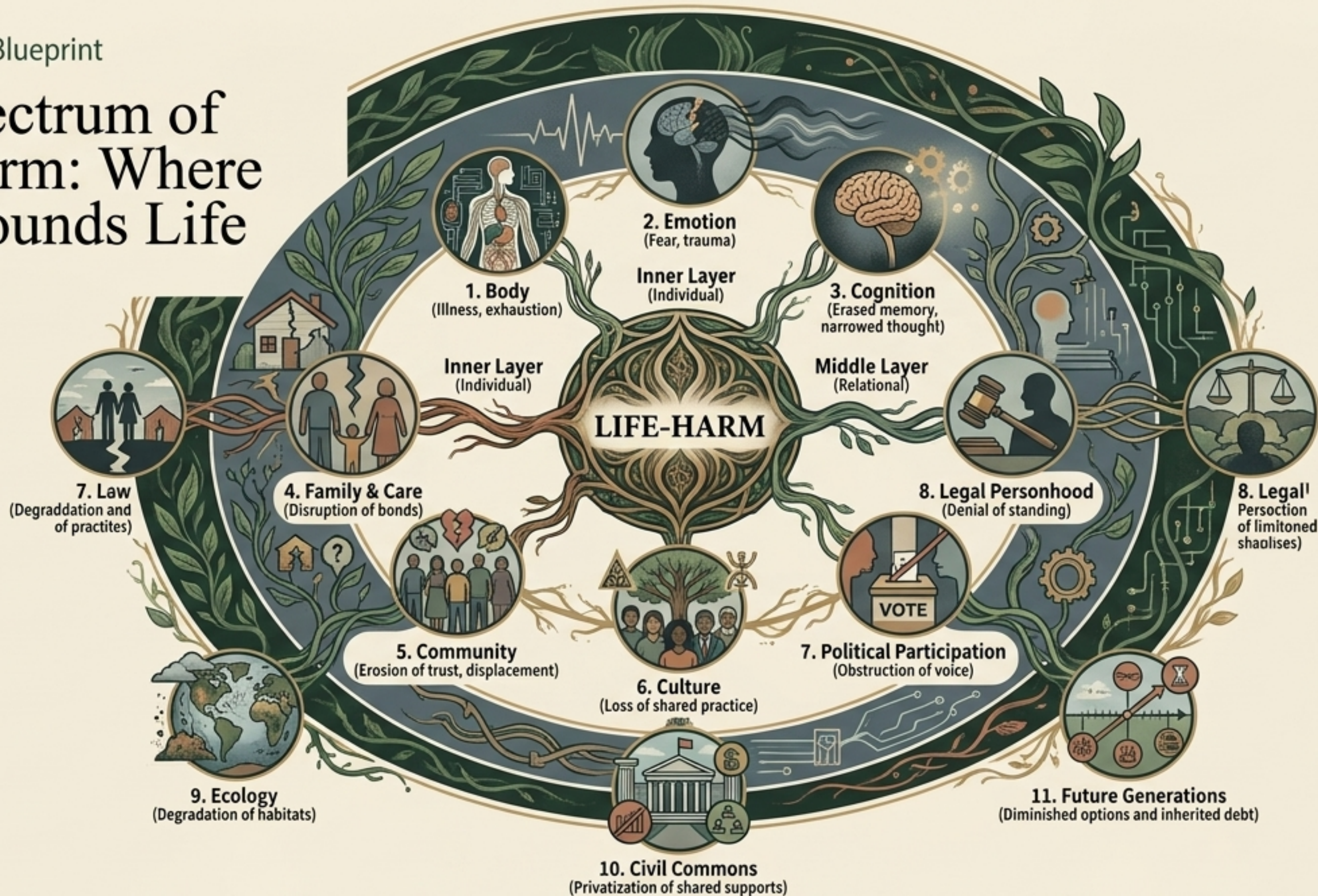
Key Takeaway:
Law speaks in concepts but lives in emotion. A legal system that says 'justice' while conserving fear will produce one kind of justice; a system conserving legitimate coexistence will produce another.

Mechanisms of Legal Abstraction: Translating Life into Claims



Abstraction is not inherently bad; human coordination requires it. The Great Inversion occurs when disembodied abstractions govern living relations while ignoring the ecological and social conditions of their existence.

The Spectrum of Life-Harm: Where Law Wounds Life



Harm at one level reverberates across others. A lawful eviction is not just property enforcement; it cascades into bodily illness, educational disruption, and community fragmentation.

The Iceberg of Legal Violence (Johan Galtung)



1. The Tip (Above Water)

Direct Violence

Visible harm by identifiable actors.

Assault, forced eviction, police brutality, punitive imprisonment. Law is highly trained to see and respond to this.

2. The Massive Base (Just Below Surface)

Structural Violence

Harm built into lawful arrangements. Predictable, organized life-reduction.

Exclusionary zoning, predatory debt, systemic poverty, permitted pollution, pollution, structural abandonment.

3. The Deep Roots (Ocean Floor)

Cultural Violence

The meaning-systems and narratives that make structural harm seem acceptable or inevitable.

The "illegal alien", the "acceptable ecological risk", the myth of "efficient austerity".



Life-blind law punishes the tip of the iceberg while actively defending the submerged structure that created it.

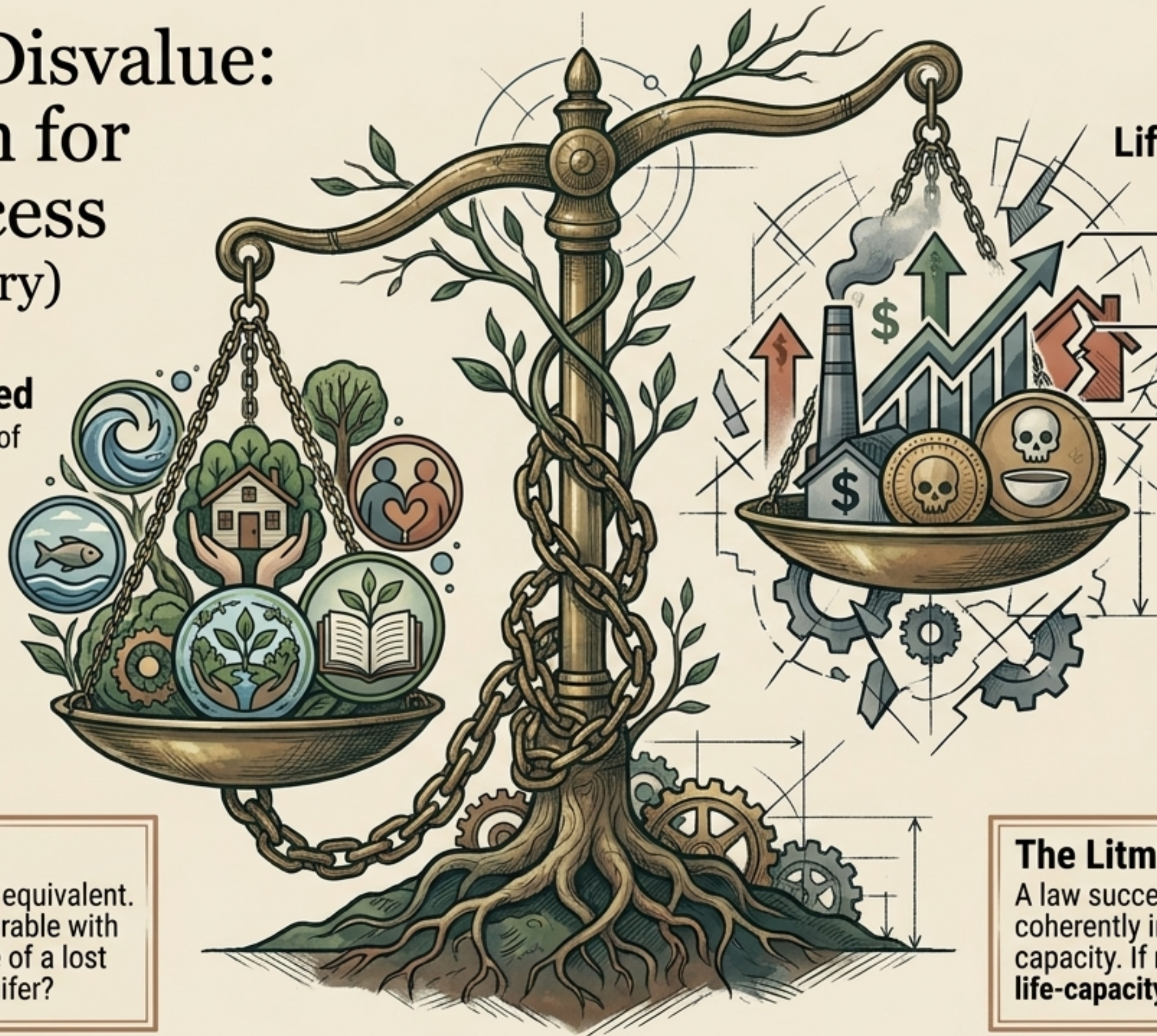
Value vs. Disvalue: The Axiom for Legal Success (John McMurtry)

Life-Capacity Enabled

Measured by the expansion of thought, felt being, action, and life-support.

Secure housing life and on life-support.

The speed by solution of ecosystem, care systems, and life-support.



Life-Capacity Disabled (Disvalue)

GDP growth
hiding pollution

Rising property values
hiding displacement

Debt returns
hiding hunger

The extraction of
monetary return
through the
externalization of harm.

Key Text:

Money is a false universal equivalent. Not all value is commensurable with currency. What is the price of a lost language? A poisoned aquifer?

The Litmus Test:

A law succeeds only if it enables a more coherently inclusive range of life-capacity. If **money-value rises** while **life-capacity falls**, the law is a **failure**.

Legitimate Otherhood: The Relational Lens (Humberto Maturana)

Core Concept: Does this legal distinction allow the affected other to arise as a **legitimate co-participant** in existence?

The Displaced

Rendered Invisible
or Threat

The Externality

**Recognized
Persons**
The Citizen
The Owner
The Creditor
The Corporate Person

The "Illegal"

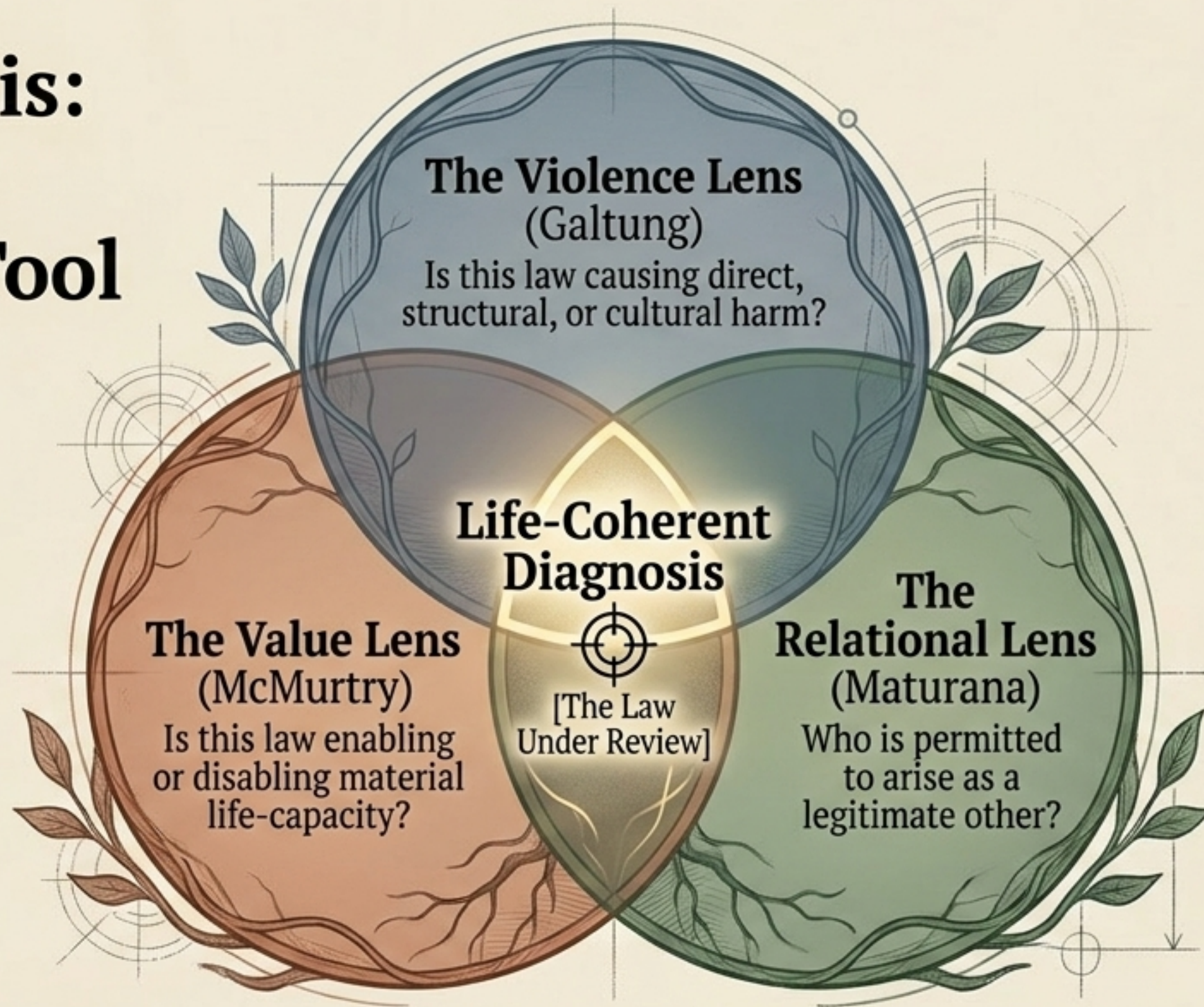
The River/
Ecosystem

Future
Generations

Law produces the other. When law says "trespasser" instead of "dispossessed," or "resource" instead of "living relation," it defines the boundaries of possible care.

Repair requires that those placed in the shadows are brought into the light of co-authorship and standing.

The Synthesis: A Triadic Diagnostic Tool



To evaluate any statute, contract, or treaty, law must pass all three tests. It must do no systemic violence (Galtung), it must protect life-necessities over financial return (McMurtry), and it must grant dignified standing to all affected life (Maturana).

Diagnosing Drift Pathologies: Learning from Historical Wounds

The Drift Pathology & Repair Matrix

Historical System	Conserved Legal Distinction	Invisible Life-Harm	Required Repair Distinction
Colonial Law	Conquest translated into sovereignty and jurisdiction.	Dispossession, cultural erasure, and ecological extraction.	Sovereignty redefined as responsibility; land recognized as relation; legal pluralism.
Segregation / Apartheid	Separation disguised as order and equality.	Humiliation, structural poverty, and enforced inferiority.	Shared civic coexistence and equal life-worth beyond formal repeal.
Predatory Debt Regimes	The future as collateral for past monetary claims.	Austerity, weakened public health, consumed future viability.	Debt bounded by life-necessities; future options protected.

The Seven Principles of Reorientation

1. Life-necessity protection

(Water, food, shelter, care, ecology)

2. Legitimate otherhood & equal life-worth

3. Non-domination and anti-violence

4. Life-Ground Primacy: Law must remain nested in, and answerable to, the conditions of life.

7. Future viability (Preserving options for generations to come)

6. Truth, naming, and repair

5. Participatory co-authorship

(Those who live the law must help bring it forth)

We do not abandon law, property, or contracts.
We re-nest them within these seven principles
so they serve life rather than dominate it.

The Path of Wu-Wei Transformation

The Guiding Formula:
Minimum force. Maximum
visibility. Precise repair.

Phase 1: Diagnosis

Notice, Name, Map,
Understand

(Making the invisible life-harm
visible without blame-first
condemnation)

Phase 2: Reorientation

Reorient, Repair

(Applying the Triadic
Diagnostic Tool and
the 7 Principles)

Phase 3: Stabilization

Recoordinate,
Conserve

(Establishing new institutional
memories and legal
precedents)

Closing Takeaway

Law becomes worthy of life when it ceases to be the memory of victorious power and becomes a living practice of shared repair.
Every visible life-harm requires responsibility. Every responsibility must be oriented toward repair.