



The Living Blueprint

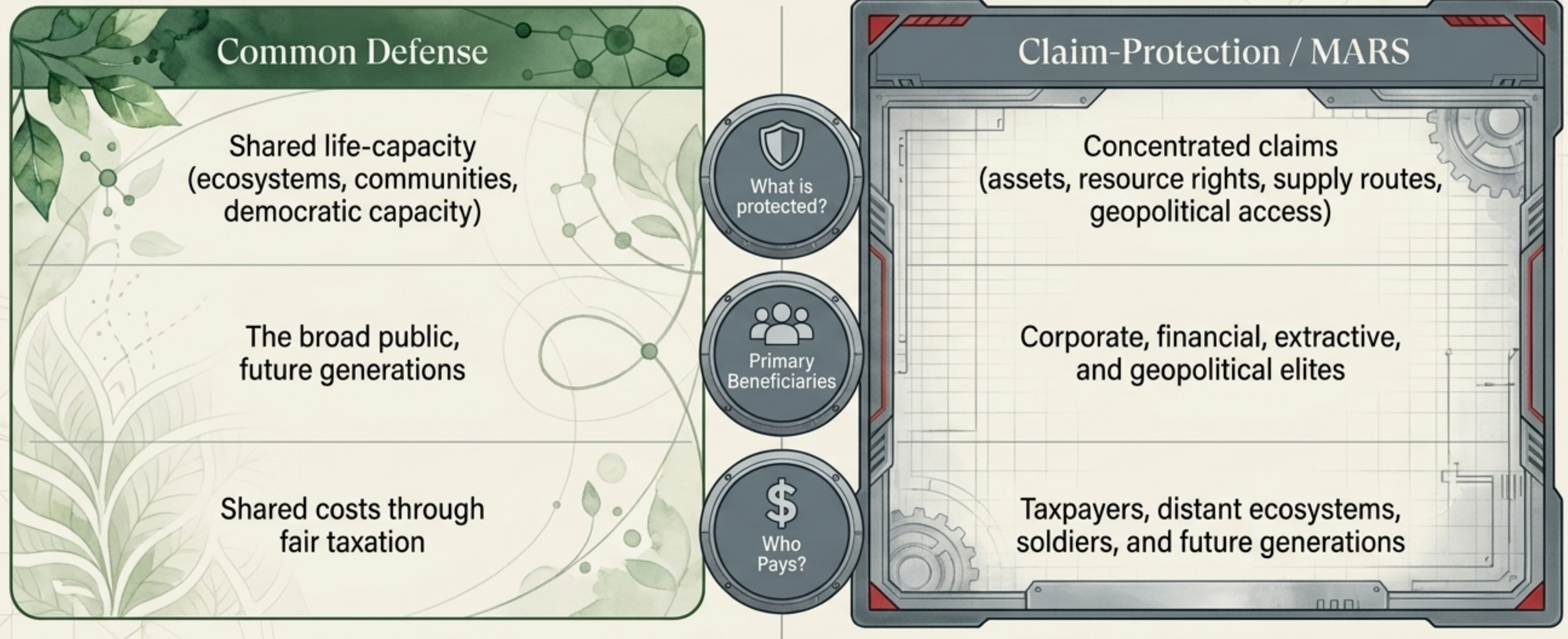
Beyond the Midas–MARS Trap

**Life-Coherent Security, Economic
Conversion, and the End of
Claim-Protected Militarism**

Dr. Bichara Sahely

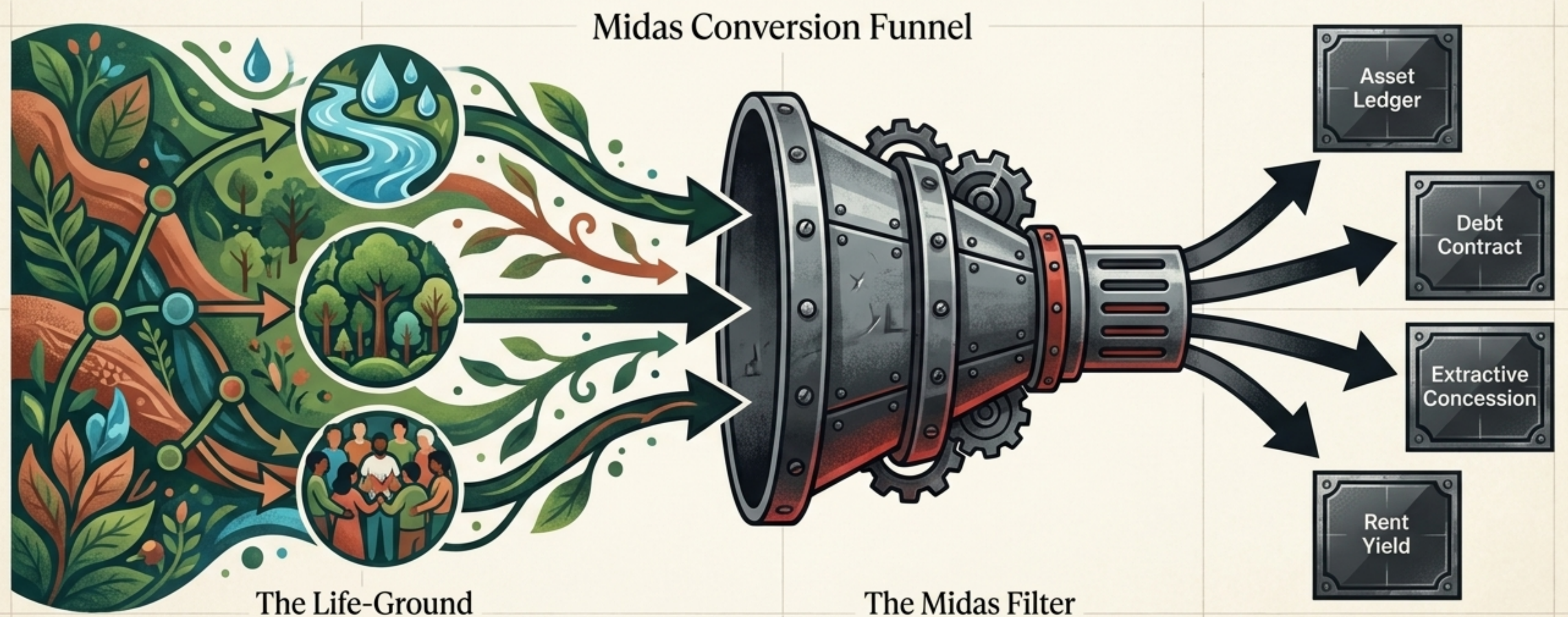
A civilizational policy corrects an error inside a frame.
A distinction reveals the frame itself.

Common defense protects shared life-capacity.
MARS protects claim-capacity.



The Midas Trap: When Claims Rule Life

Midas names the civilizational drift where money-value, asset-value, and corporate claim-value become sovereign over the living conditions from which all real value arises. A river becomes a shipping route. A forest becomes timber-value. A community becomes a labor pool. A claim is only legitimate when answerable to the life-ground from which its value arises.



MARS: Militarized Asset-Resource Security

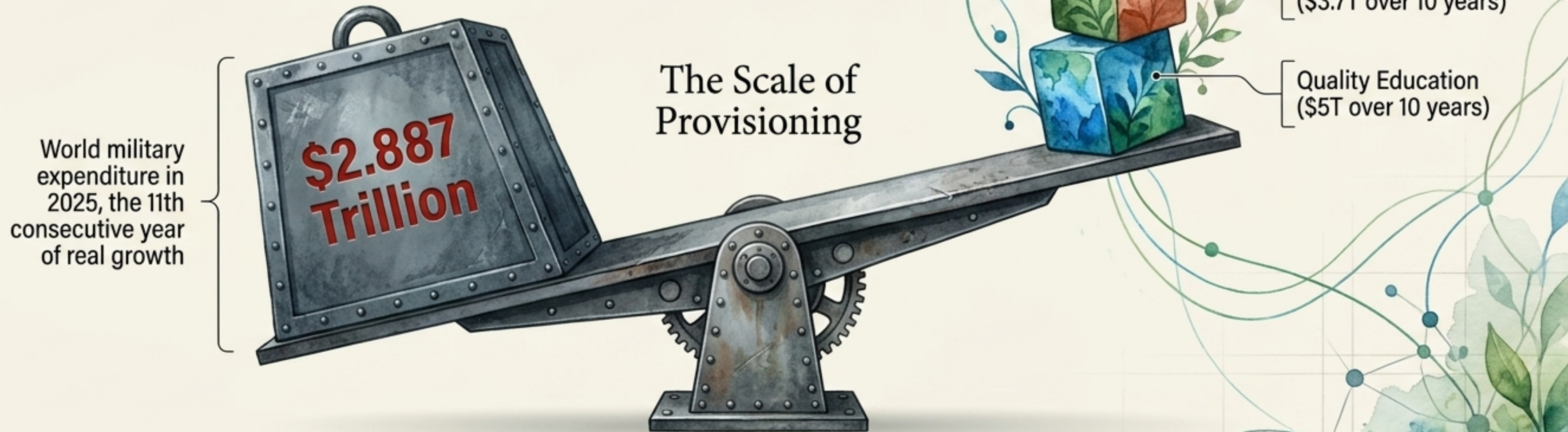
Claims do not enforce themselves. When affected communities resist dispossession, extraction, or debt discipline, they challenge a claim. MARS organizes military, intelligence, and coercive systems to protect these claims, presenting that protection under the moral camouflage of "defense," "stability," or "national interest."



The Metrics That Matter: Death-Provisioning vs. Life-Provisioning

The issue is not absolute scarcity.
The issue is conserved allocation.

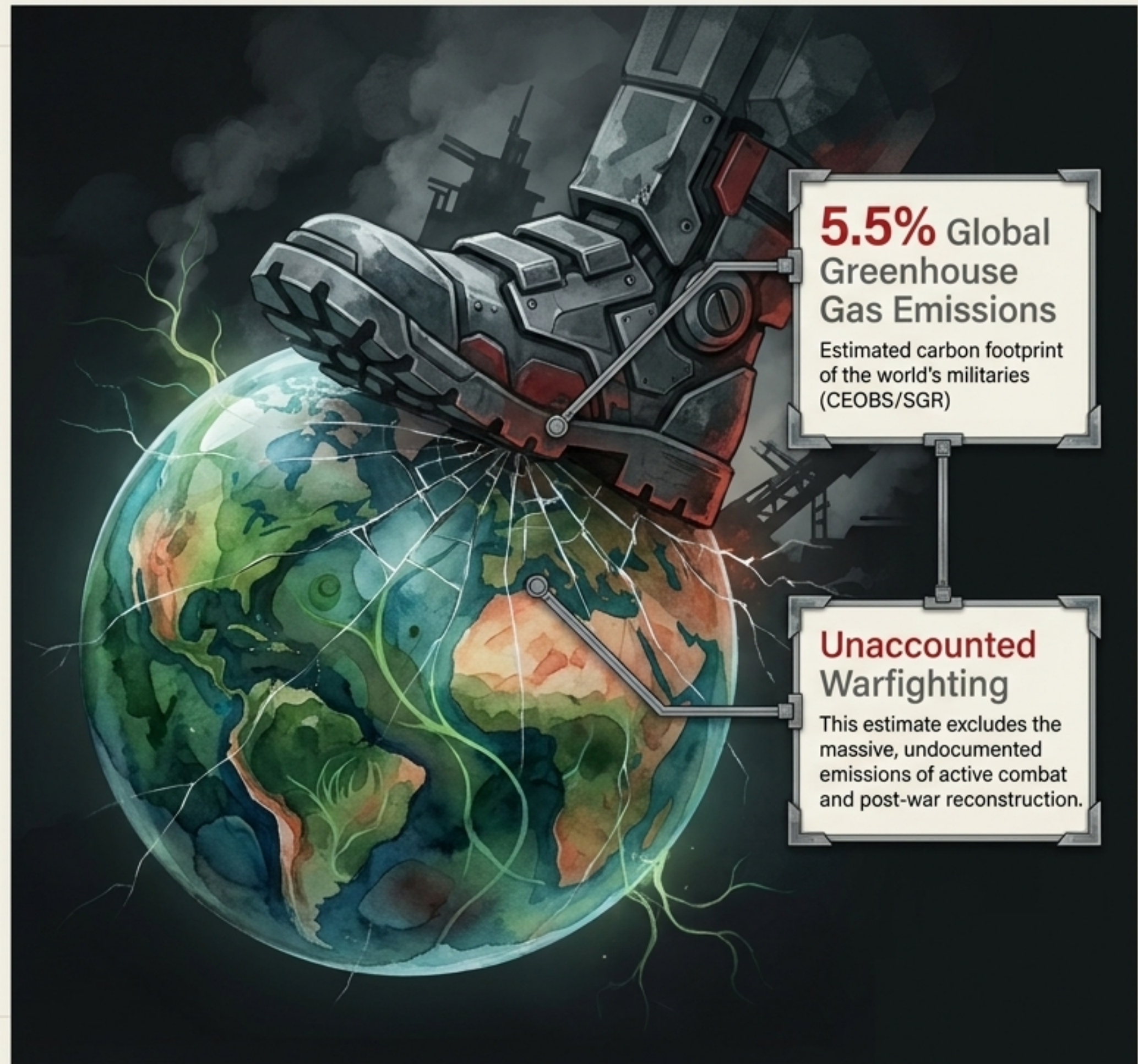
We have chosen to define security in ways that fund
organized threat more reliably than organized care.



The Ecological Contradiction of Militarized Security

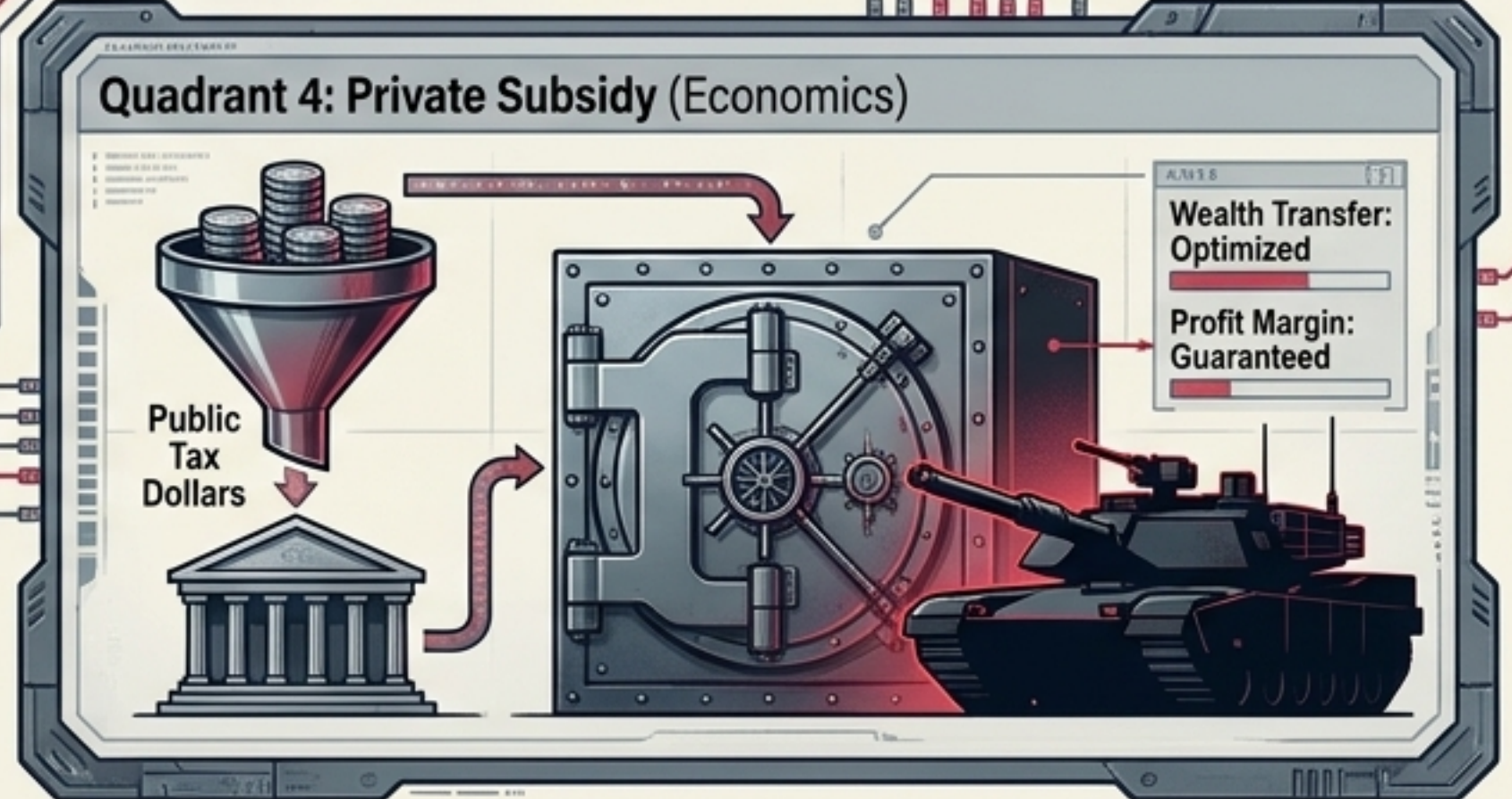
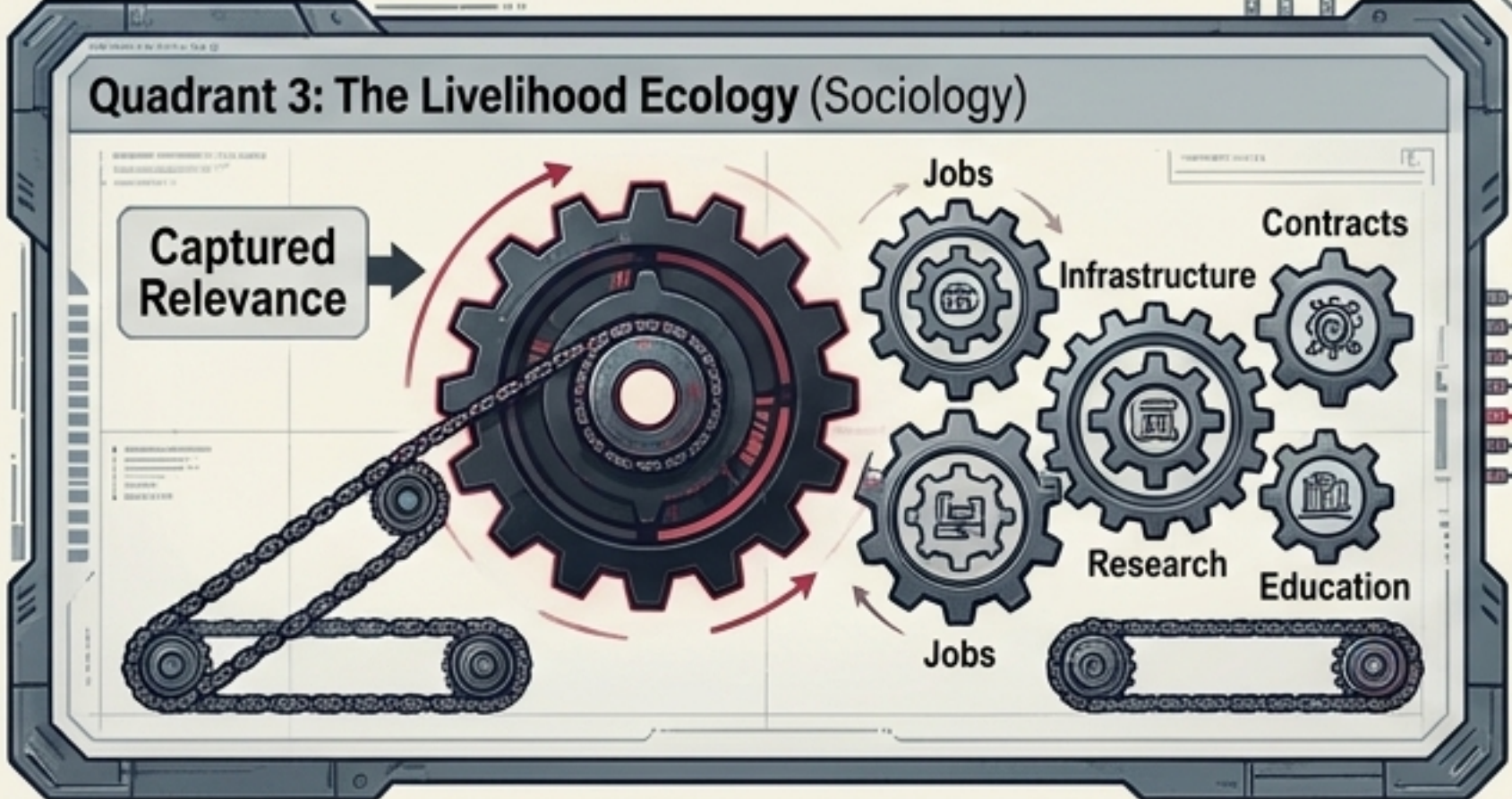
The military system claims to defend civilization while accelerating the destabilization of the biosphere civilization requires.

Ecological security is not a supplement to national security. It is the condition of any meaningful security.



Deconstructing the Trap: A Unified Diagnostic

Militarism persists not just through force, but through a unified ecology of false logic, psychopolitics, economic dependence, and public subsidy.



The Insecurity Blanket

The military-industrial complex is embedded in our livelihoods. It persists because it provisions: jobs, grants, contracts, status, and local economic stability.

This creates captured relevance: Institutions speak eloquently about sustainability and equity, but remain structurally mute about the weapons systems on which their funding depends.



The Ethical Center: No One Disposable

The person is not the enemy in their being. The enemy is the life-destroying pattern that converts human capacity into death-provisioning. No person is disposable, but no life-destroying dependency is entitled to continue. Target the pattern. Liberate the person.

Person vs. Pattern Map

Organic/Human



A worker

A soldier

A researcher

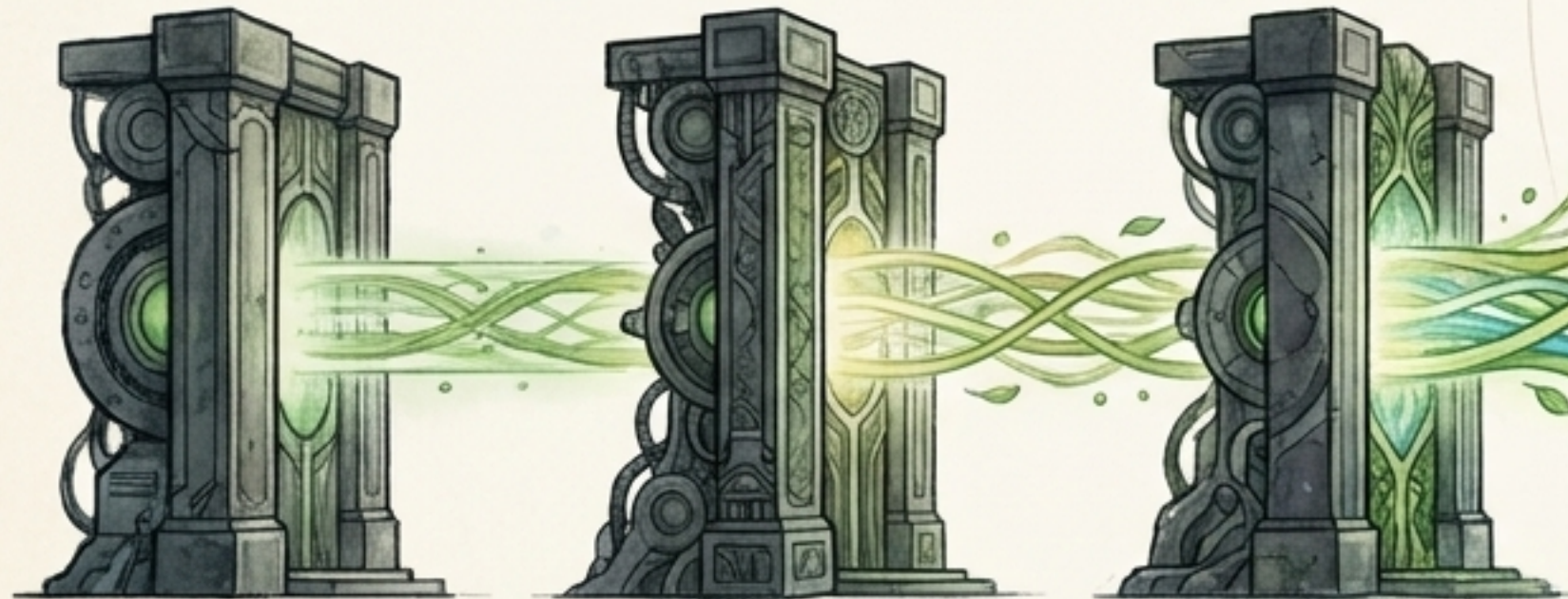
A student

Rigid/Mechanical



The New Paradigm: Life-Coherent Security

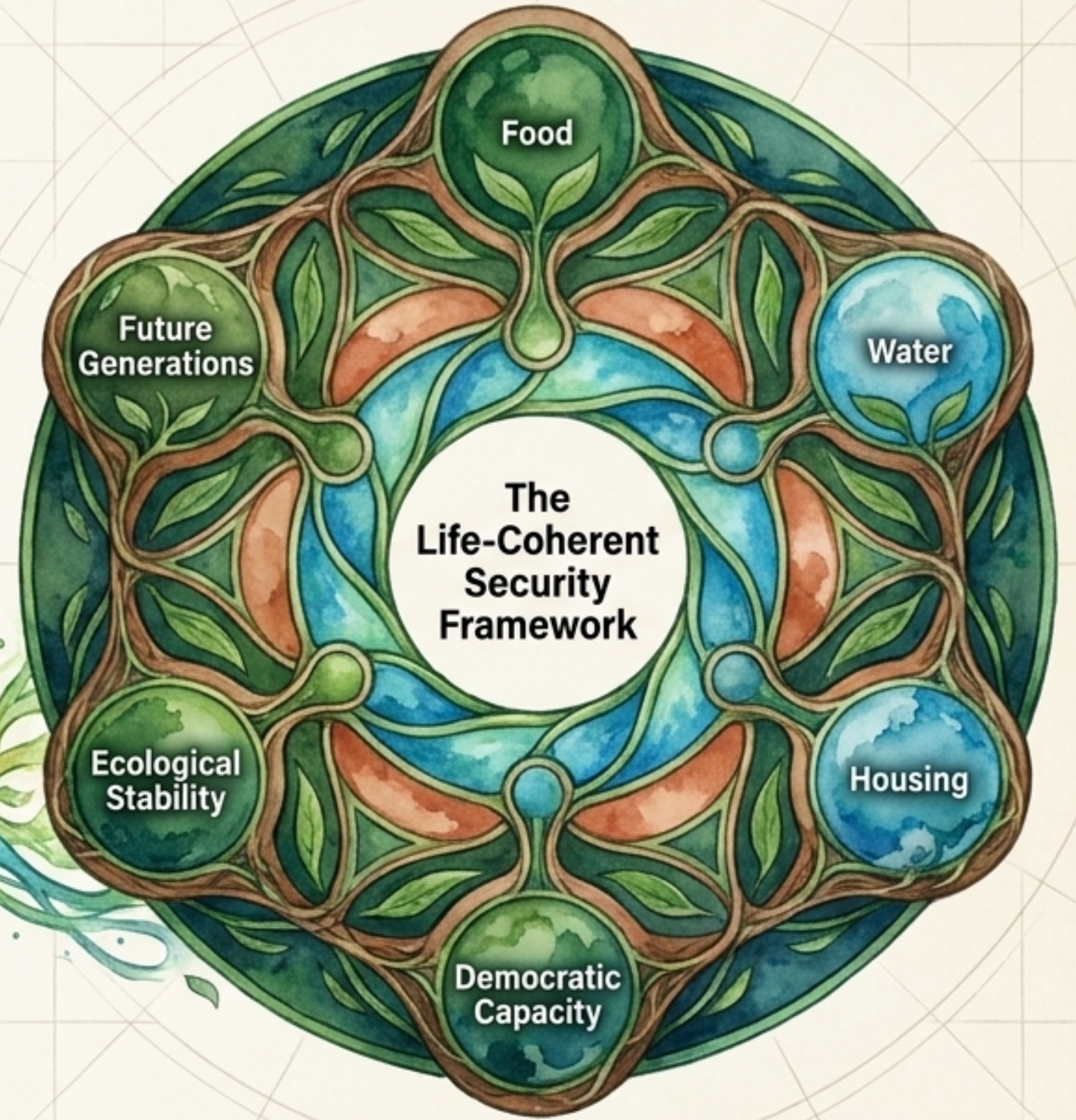
Security is the shared capacity of life to continue, repair, learn, adapt, and flourish under constraint.



Gate 1:
The Life-Ground Test:
Does it preserve or repair
living conditions?

Gate 2:
The Non-Disposability Test:
Does it protect without
making anyone expendable?

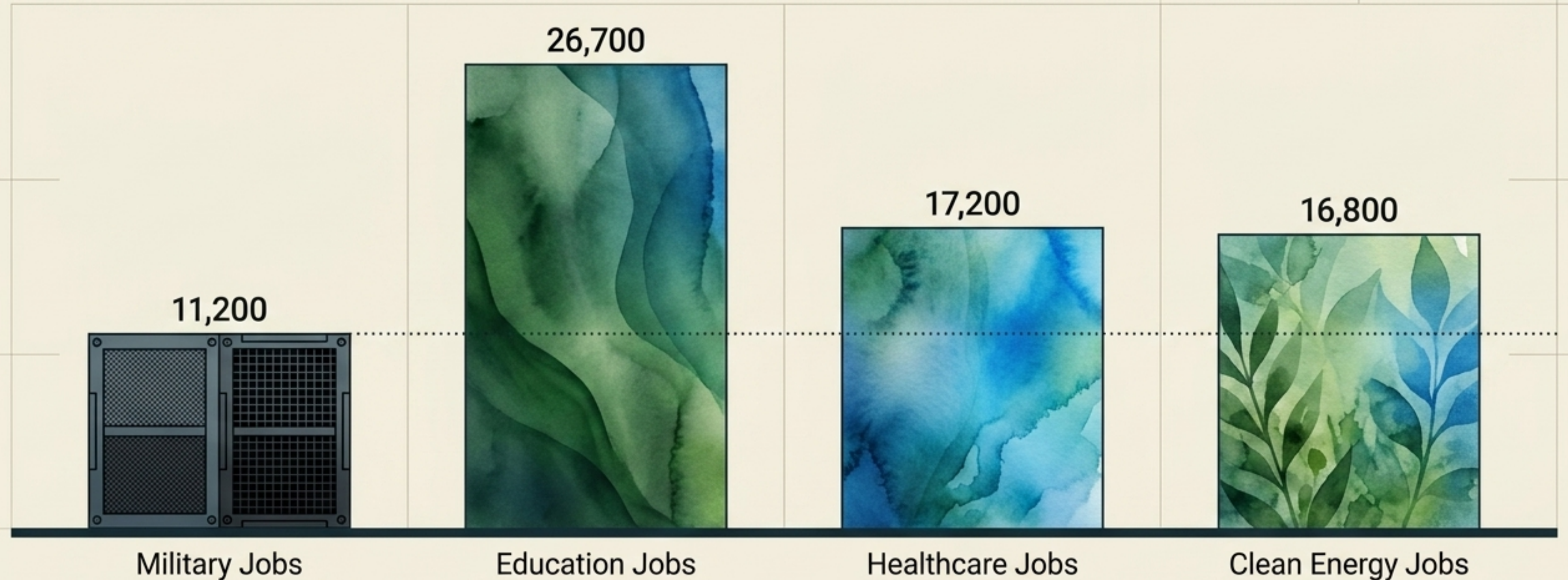
Gate 3:
The Shadow Test:
Are we projecting denied
violence onto an enemy?



The Choice is Not Between Jobs and Peace

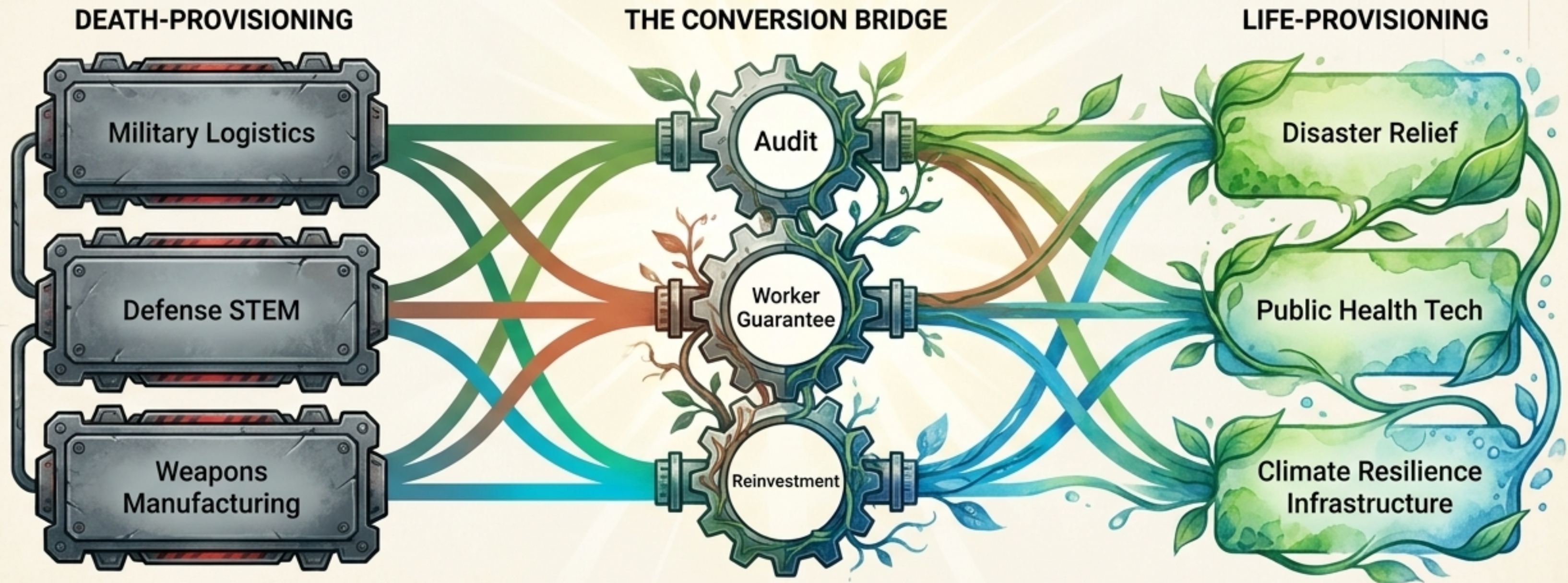
Demilitarization without alternatives generates backlash. Conversion must be designed as a just transition. Life-provisioning is a higher-employment, higher-care, higher-resilience economic pathway.

The Jobs Multiplier Matrix



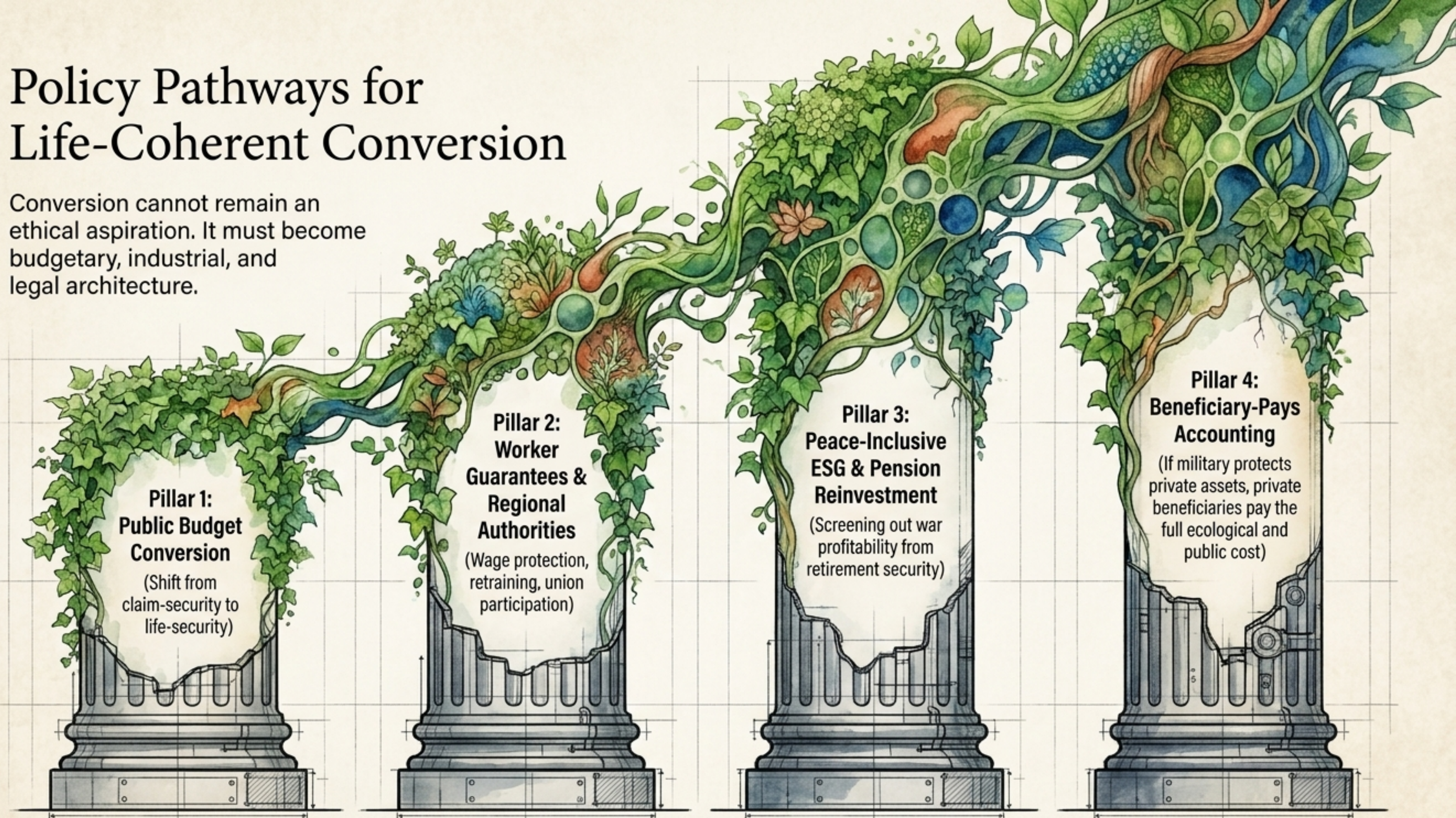
From Death-Provisioning to Life-Provisioning

Disarmament removes capacity for harm. Conversion redirects capacity toward life. The engineer who designed weapons platforms can design flood defenses. The logistics expert can support ecological repair.



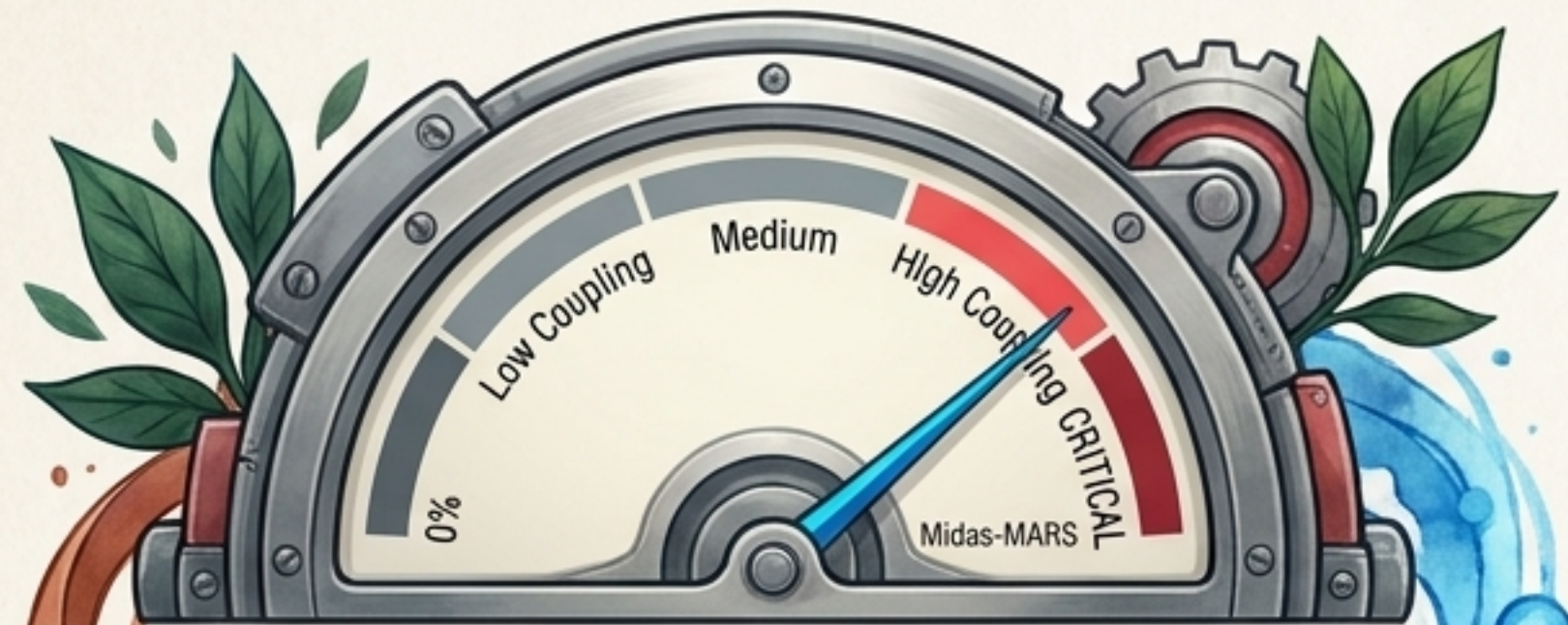
Policy Pathways for Life-Coherent Conversion

Conversion cannot remain an ethical aspiration. It must become budgetary, industrial, and legal architecture.



The Life-Coherent Coupling Audit

How are we sustained, and what does our sustenance sustain? This is not a purity test to punish the entangled. It is a repair instrument to make conserved drift visible.



Financial Coupling: Do we receive grants/returns from the security/extractive apparatus?



Livelihood Coupling: Who depends on this arrangement for survival?



Mission Coupling: Has our research/program design been shaped by military funding?



Silence Coupling: What cannot be said because of dependency?

Peace Nurturing True Prosperity

Midas produces cursed wealth by turning life into gold. Mars protects it by force. Eirene nurtures true wealth by protecting the conditions of life.

Prosperity is not what survives by force—it is what grows when life is protected enough to flourish.

