

THE LIVING BLUEPRINT

FROM BEYOND GDP TO LIFE-COHERENT PROGRESS

GDP

NARROW MEASUREMENT OF ECONOMIC OUTPUT



BASED ON THE ACADEMIC WHITE PAPER
BY DR. BICHARA SAHELY

The Necessary Widening of the Compass



Panel 1: GDP (The Era of Output)

Designed to measure the scale of monetized economic activity.

The Limit: Treats pollution cleanup, preventable disease treatment, and disaster rebuilding as **growth**.

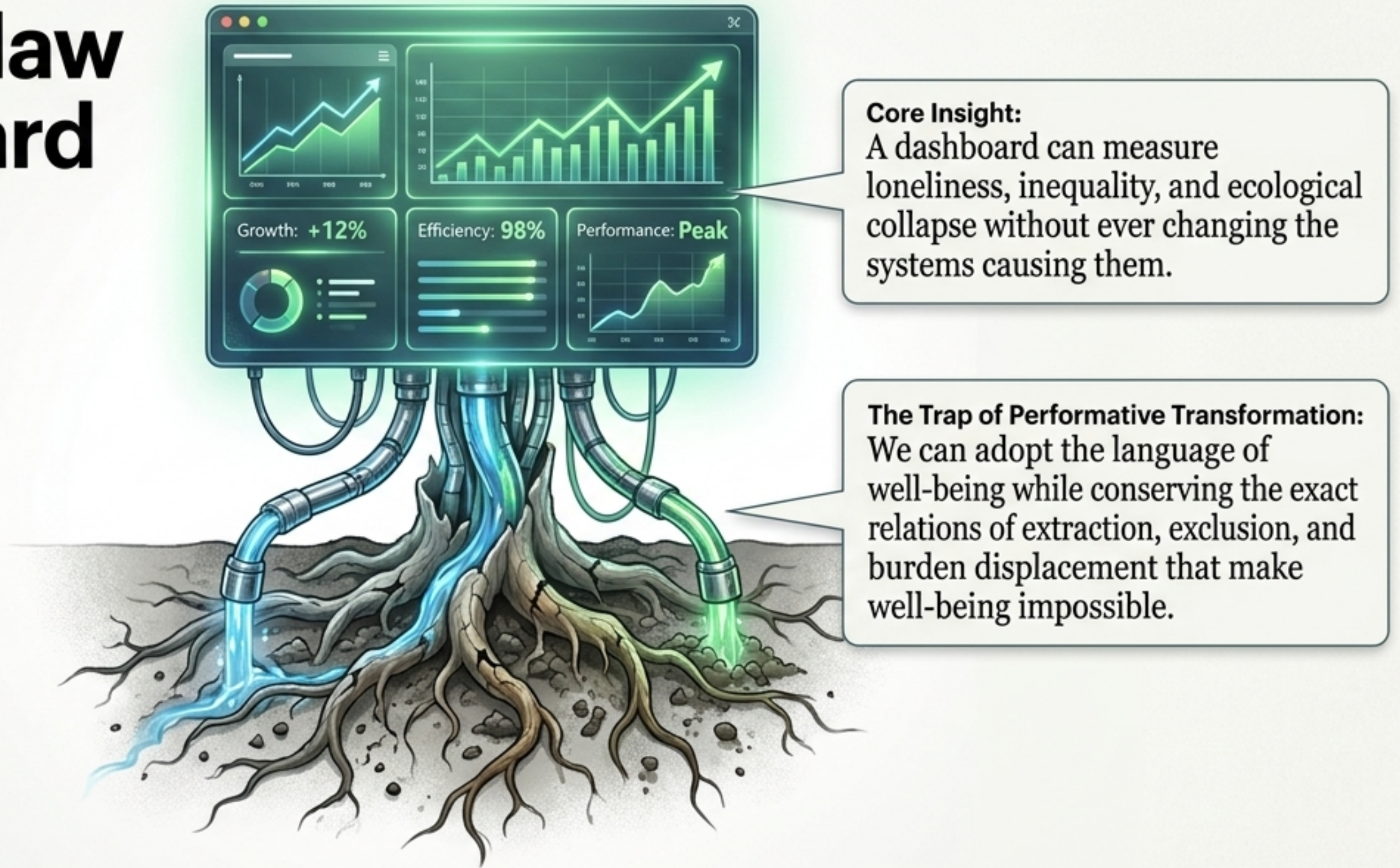


Panel 2: Beyond GDP (The Era of Measurement)

The UN High-Level Expert Group's vital intervention: measuring progress as equitable, inclusive, and sustainable well-being.

The Advance: Widens visibility to track human rights, social cohesion, and the **five capitals** (Produced, Human, Social, Institutional, Natural).

The Fatal Flaw of Dashboard Thinking

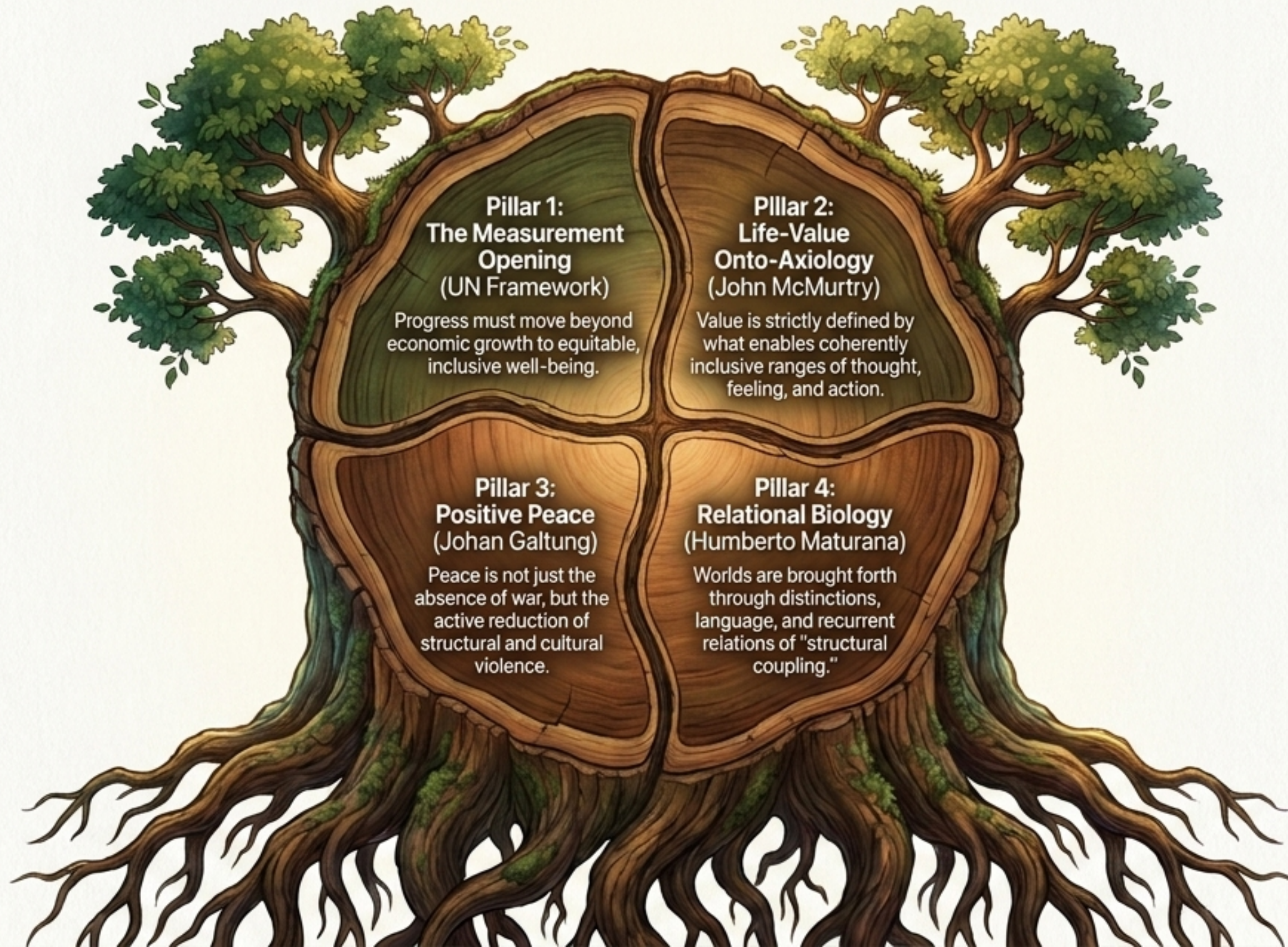


“If GDP asks ‘How much activity is occurring?’ and Beyond GDP asks ‘Are well-being and sustainability improving?’, what asks if our actual way of living enables life to survive?”

The Three Horizons of Progress

	GDP	Beyond GDP	Life-Coherent
Ultimate Goal	Expand monetized economic throughput.	Improve multidimensional well-being and sustainability.	Expand the capacity of life to live, heal, repair, and flourish.
View of Nature	Infinite resource and waste sink.	'Natural Capital' to be managed alongside other assets.	The non-substitutable 'Life-Ground' upon which all value rests.
Definition of Peace	Uninterrupted market activity.	Absence of conflict-related deaths.	Active reduction of structural, ecological, and avoidable life-harm.
The Core Flaw	Blind to life-loss.	Can become performative measurement.	Requires radical system de-implementation.

The Four Pillars of Life-Coherence



The Capital Litmus Test: Accumulation vs. Regeneration

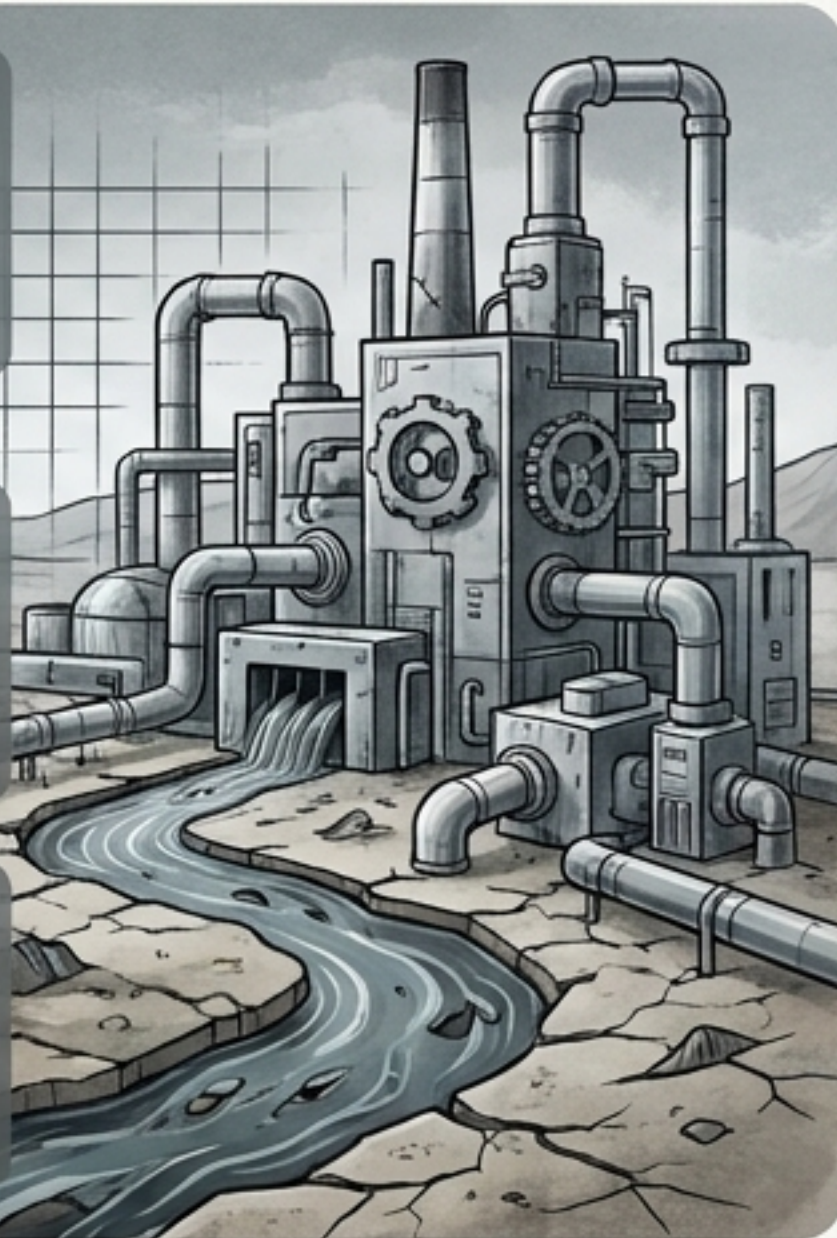
Core Principle: Capital is not automatically life-enabling. It becomes 'Life Capital' only when it secures life goods without cumulative life-loss.

Life-Incoherent Capital

Human Capital (False):
Education designed purely for labor-market sorting and credential competition.

Produced Capital (False):
Luxury housing held as empty speculative assets while shelter insecurity rises.

Natural Capital (False):
Treating nature as an asset class available for substitution (a reef traded for a hotel).

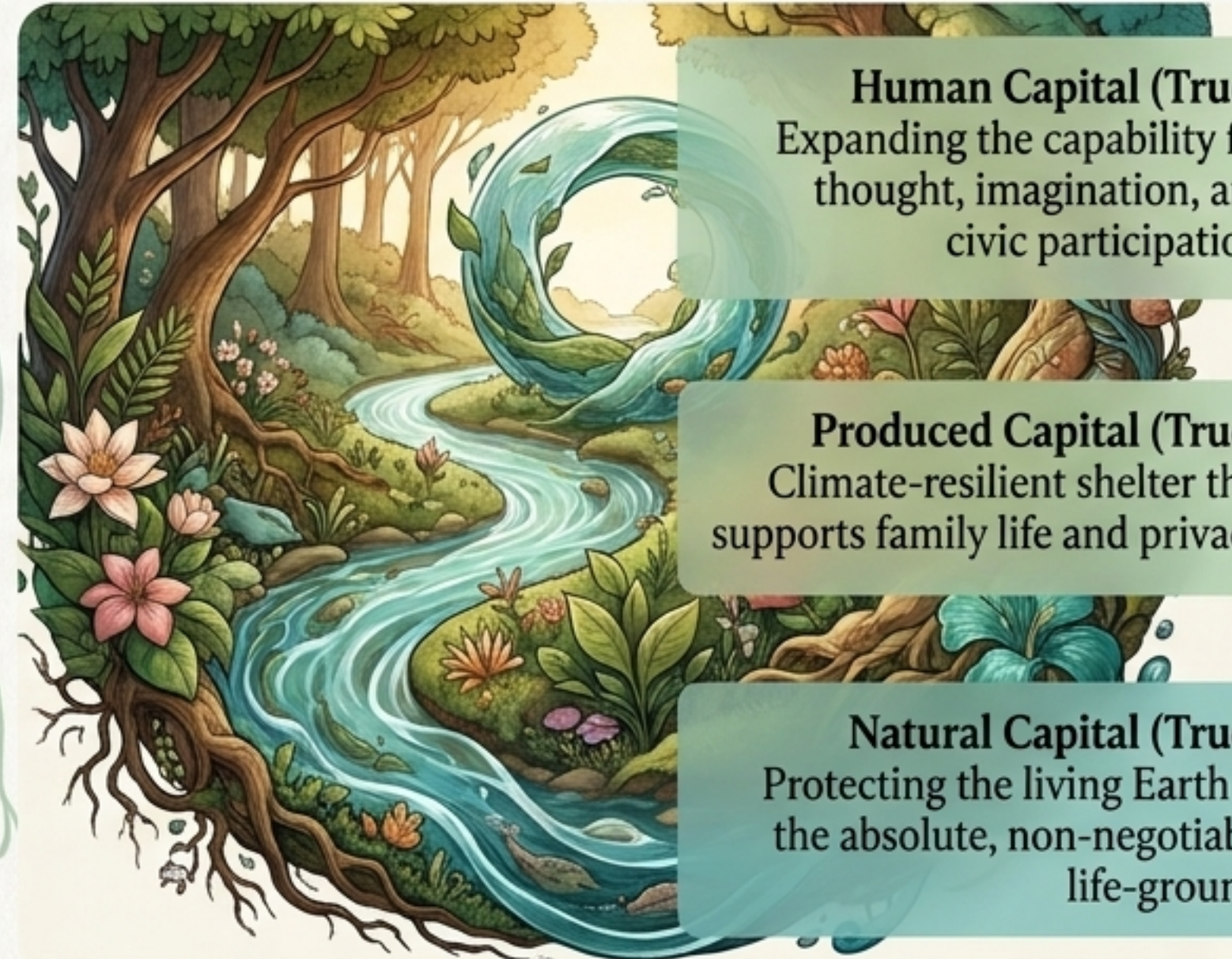


True Life Capital

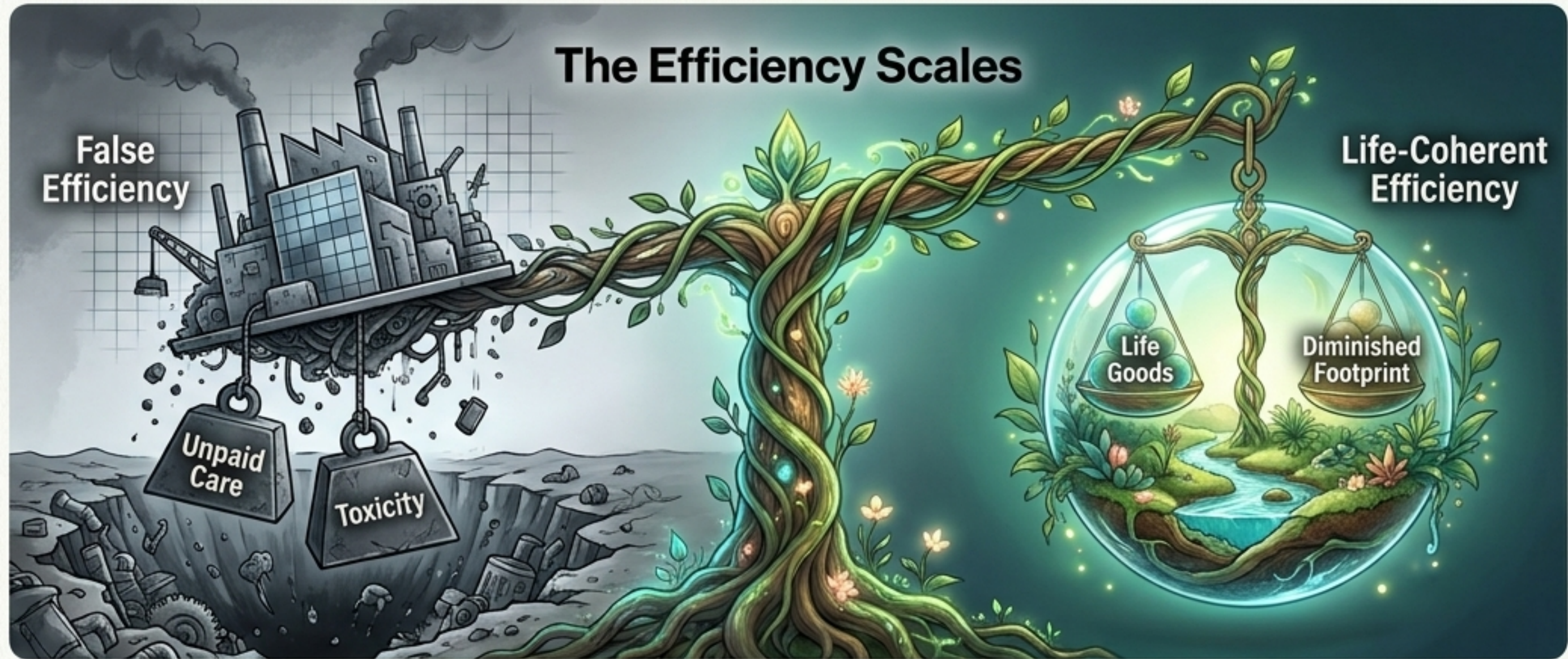
Human Capital (True):
Expanding the capability for thought, imagination, and civic participation.

Produced Capital (True):
Climate-resilient shelter that supports family life and privacy.

Natural Capital (True):
Protecting the living Earth as the absolute, non-negotiable life-ground.



Reclaiming Efficiency for Life



The Trap of False Efficiency

Defining inputs narrowly (budget, paid labor) and ignoring displaced burdens.

Example: A hospital discharging patients early appears efficient, but secretly exports massive unmeasured labor onto family caregivers.

Ecological Efficiency

Providing universal life goods with diminishing ecological waste and life-ground degradation.

Physical Input-Output Efficiency

Securing necessary life goods using less space, less material, and less mandatory life-time loss.

Human Development Efficiency

Producing outcomes that expand human capabilities rather than consuming the worker or capturing human attention.

The Iceberg of Harm: From Negative to Positive Peace

Above the Surface (Negative Peace)

1. Absence of war.
2. Reduction of conflict-related deaths.
3. What GDP and basic dashboards measure.

Below the Surface (Positive Peace & Structural Harm)

Commercially Mediated Harm: Predatory marketing, ultra-processed food environments, attention capture.

Institutionally Mediated Harm: Administrative burden, denial of care, procedural humiliation.

Ecologically Mediated Harm: Toxic exposure, climate destabilization, displaced environmental costs.



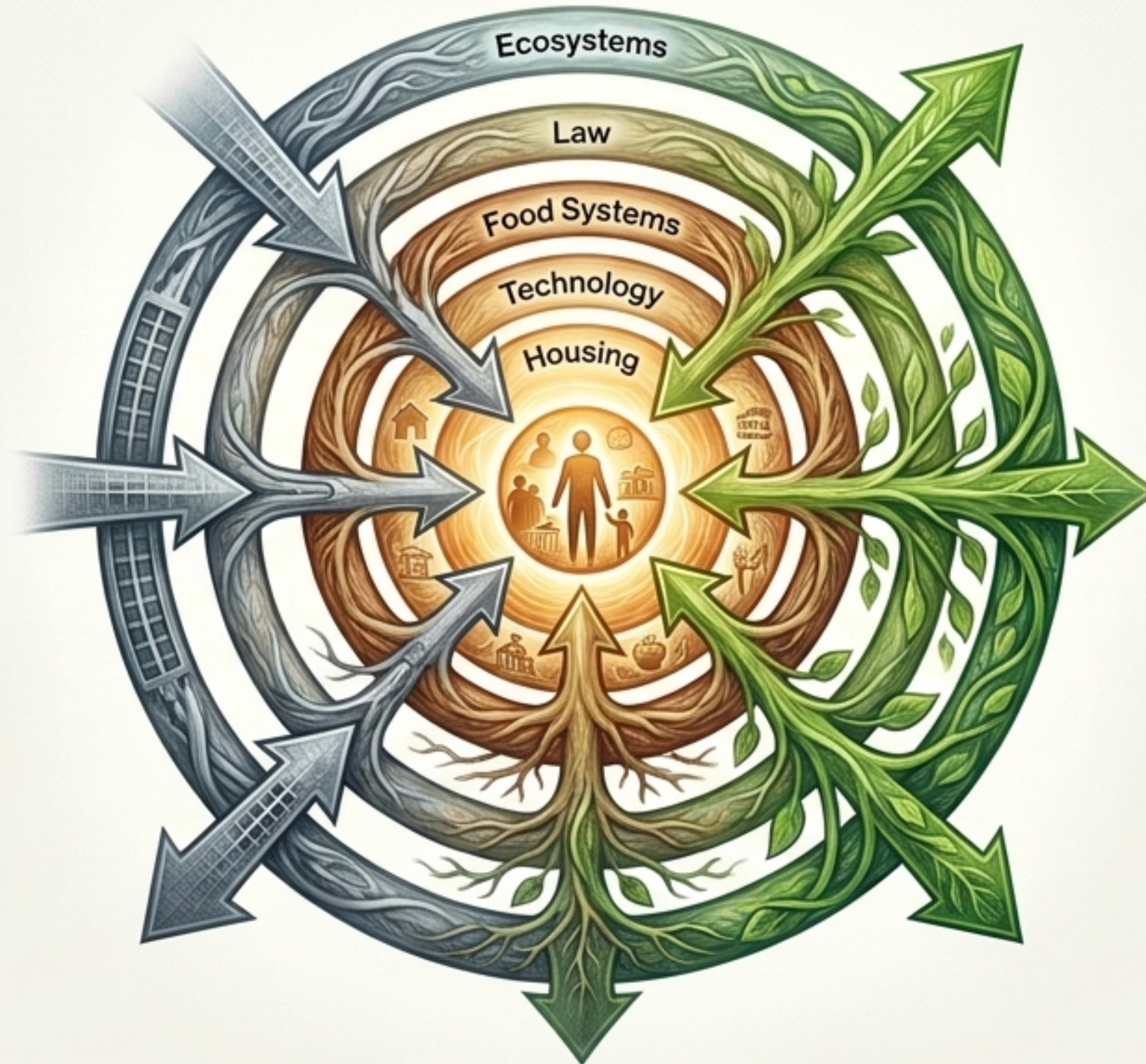
Life-Coherent Peace is the active transformation of these submerged life-reducing systems.

The Organism-Niche Relation

The Concept

Living beings do not exist inside a vacuum; they conserve themselves through recurrent relations with their medium. The child breathes the atmosphere. The worker metabolizes the schedule. The patient carries the institution.

The Niche-Organism Target

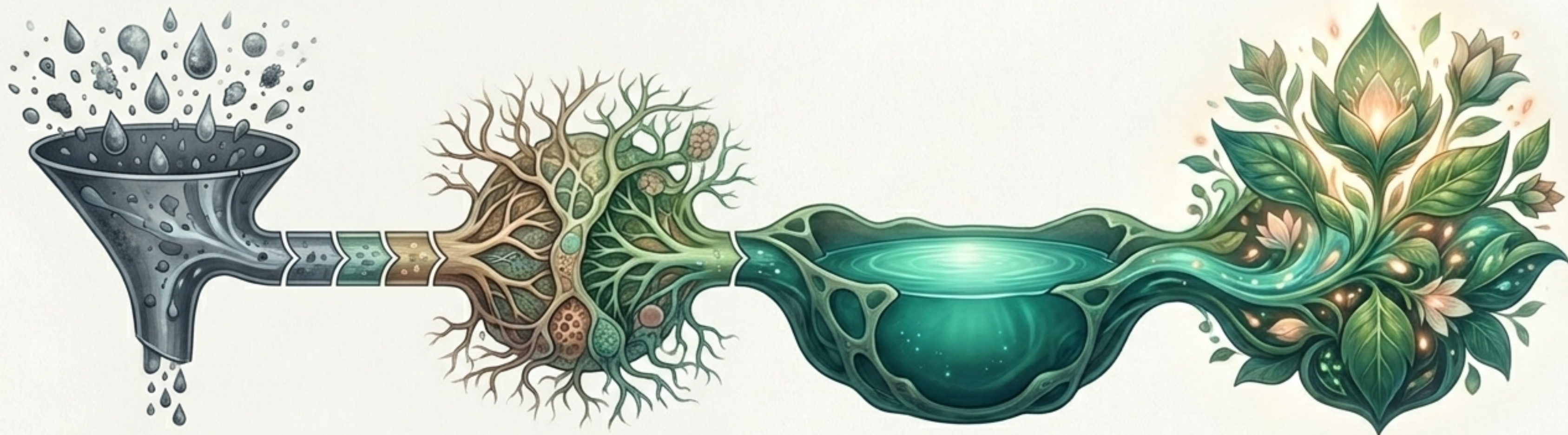


The Design Imperative

We must stop advising individuals to simply “make better choices” within toxic niches.

We must redesign the affordances of the niche to make life-enabling actions easy, safe, and supported.

The Generative Engine of Flourishing



Stage 1

Exposure

The cumulative physical, psychosocial, and ecological pressures a community absorbs.

Stage 2

Repair Pathways

The accessible pathways to recover, heal, and learn (rest, restorative justice, ecological regeneration).

Stage 3

Margins

The non-negotiable reserves (time, buffer, surge capacity) that prevent a system from collapsing under stress.

Stage 4

Life-Capacity

The resulting ability to flourish, participate, and co-exist.

Margins are not inefficiencies; they are the infrastructure of resilience.

Civil Commons: The Architecture of Access

The Definition

Shared life-support systems that enable access to universal life goods without requiring private purchasing power.

The Shift

Well-being cannot be privatized. If clean water, clean air, safe space, public knowledge, and ecological protection are treated merely as commodities, the vulnerable absorb all the exposure.

The Mandate

Restoring the commons is not a welfare addition; it is the fundamental health-generating prerequisite of a life-coherent society.



The Burden Displacement Audit

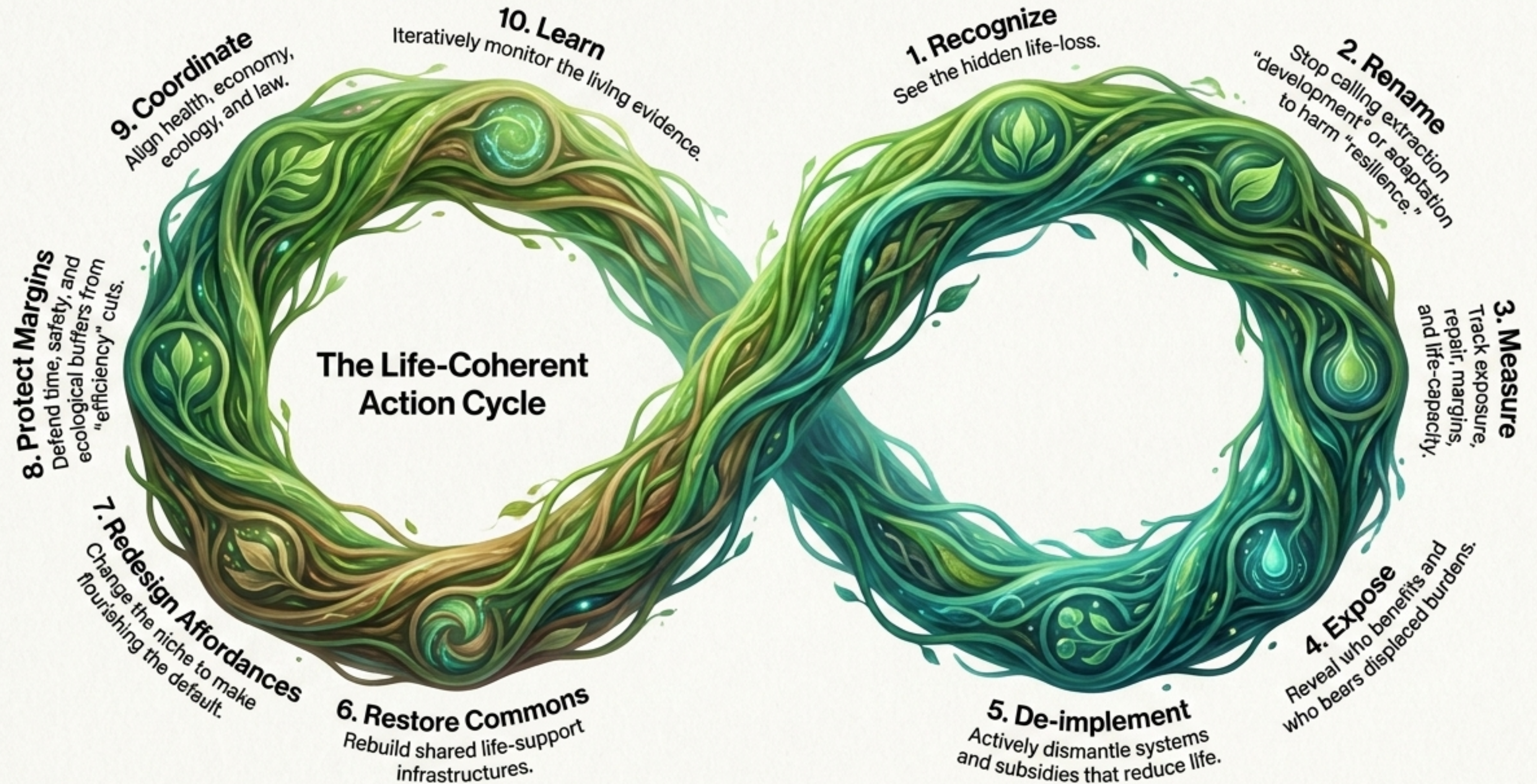


The Core Question: Is our apparent progress achieved by exporting harm?

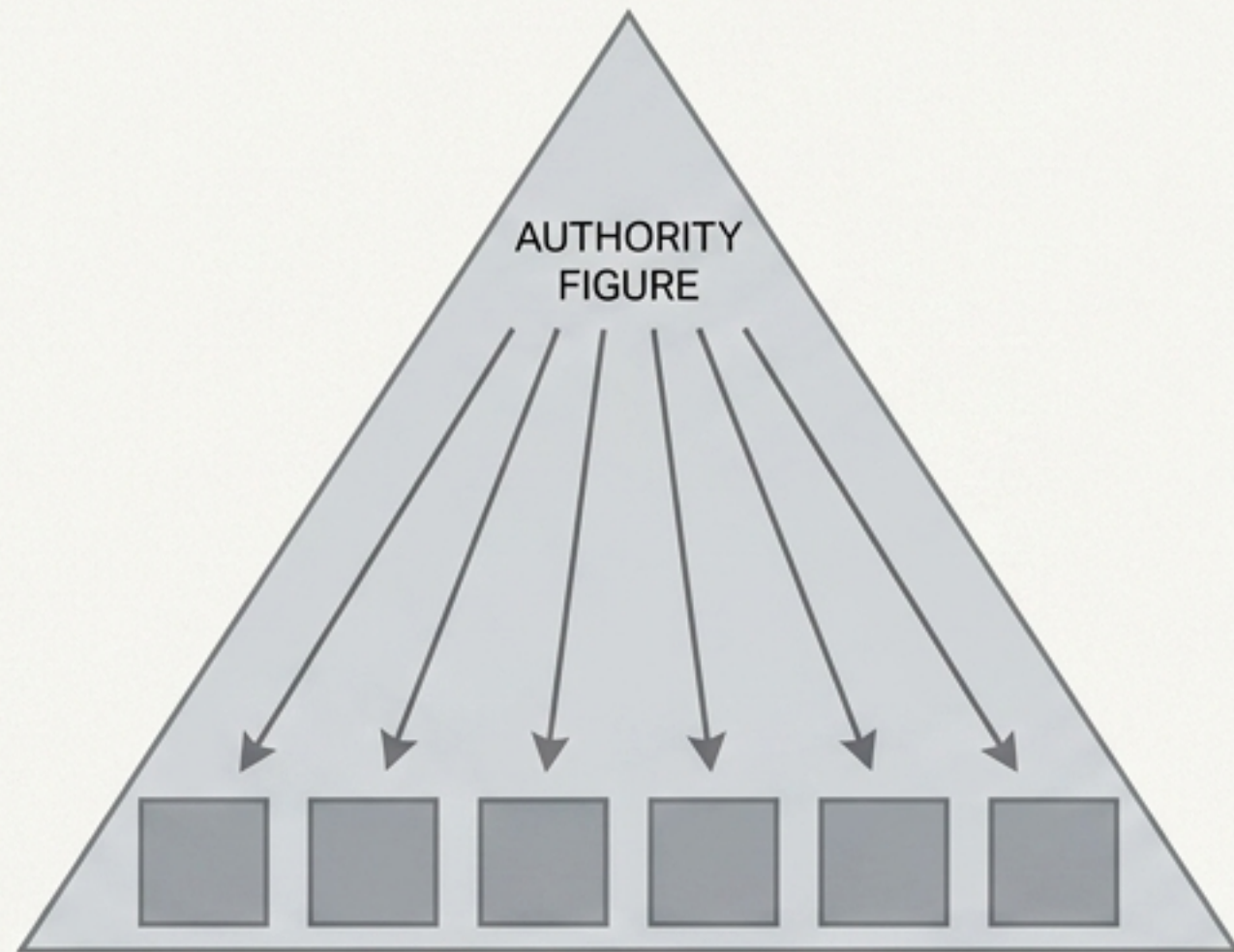
1. Who consumes and who extracts?
2. Who absorbs the waste and pollution?
3. Which families absorb the unpaid care deficit?
4. Which future generations inherit the risk and debt?

The Rule: A system is not life-coherent if it praises the 'resilience' of vulnerable communities while simultaneously forcing them to absorb the costs of another's accumulation.

From Measurement to Transformation

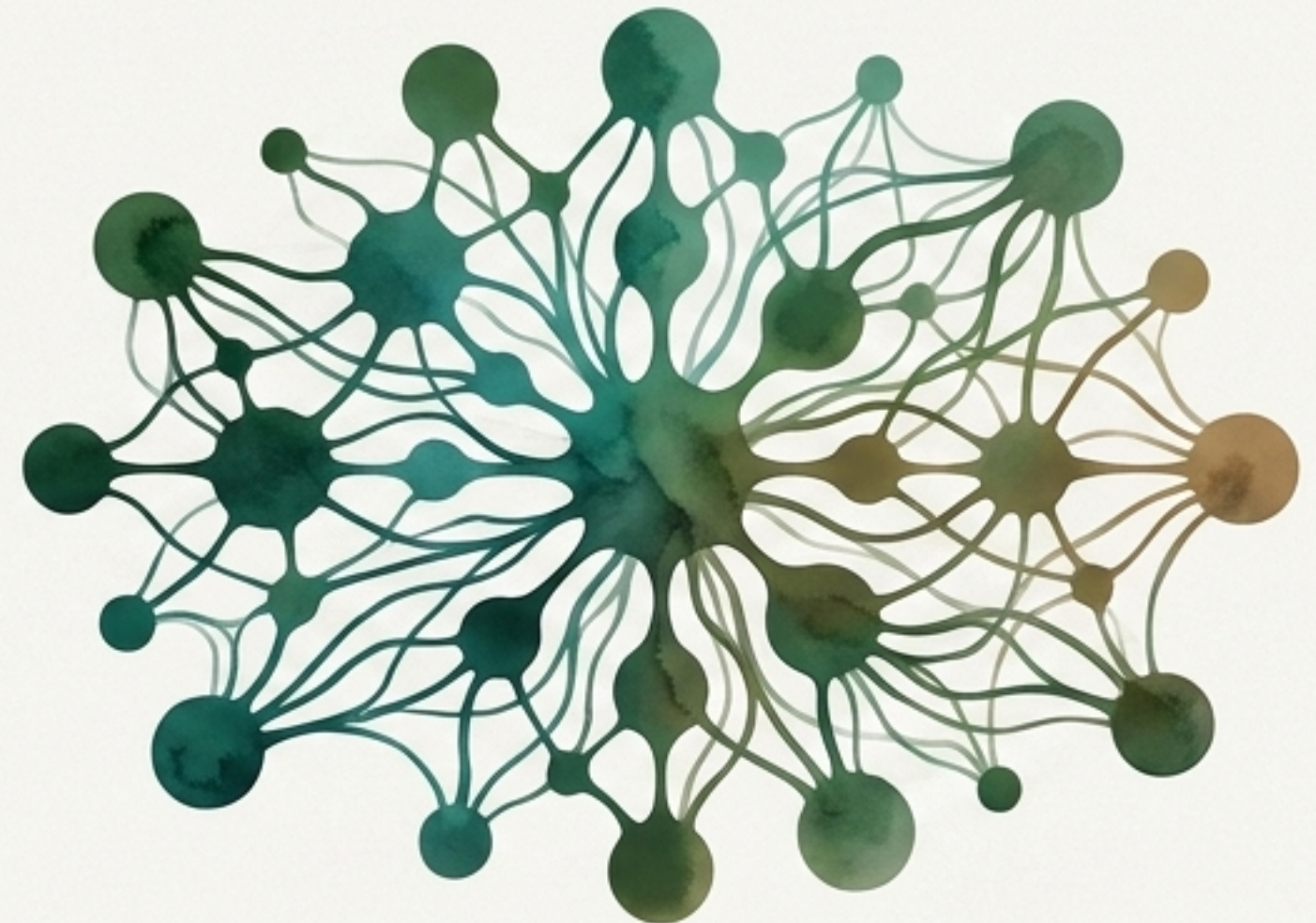


The Life-Coherent Conversation



Technocratic Consultation

Beyond Stakeholder Management: We cannot simply ask affected groups to “validate” an already established dashboard. We must change whose knowledge is recognized as legitimate.



Legitimate Coexistence

Giving Voice to the Voiceless: “All those affected” includes those who cannot sit at a policy table. Ecosystems (represented through science, Indigenous knowledge, and guardianship) and Future Generations (represented through precaution, law, and moral imagination).

The Litmus Question for Governance: What ways of living are we conserving, and do they enable life?

A New Civilizational Utterance

“Let us no longer ask life to justify itself before the economy. Let the economy, technology, law, policy, medicine, education, and governance justify themselves before life.”

The ultimate measure, purpose, capital, and horizon of progress is the flourishing continuity of life.