

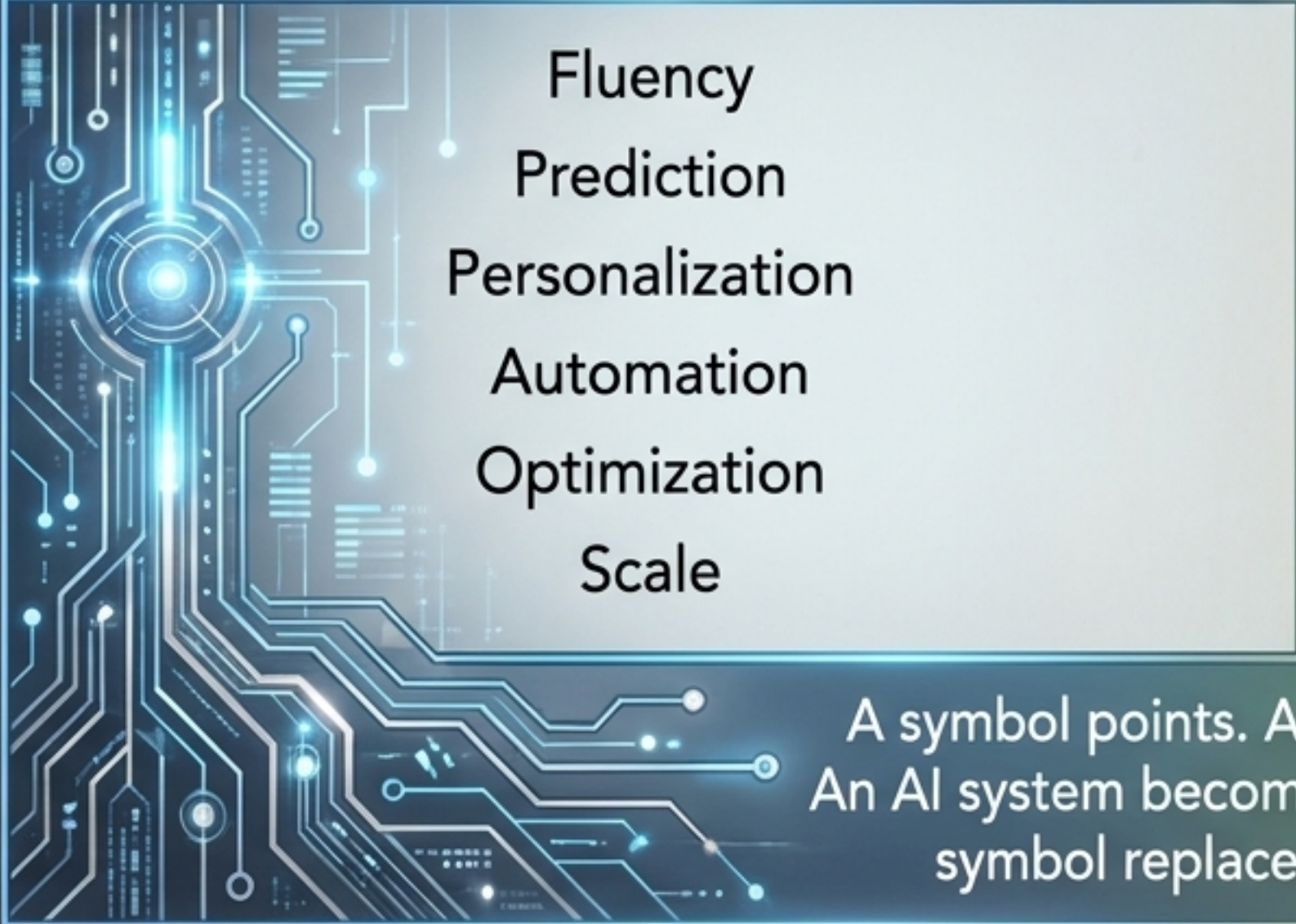

Artificial Intelligence and the Conditions of Life

Moving beyond technical alignment to protect the shared capacity for human and ecological flourishing.



The Pathology of Symbolic Substitution

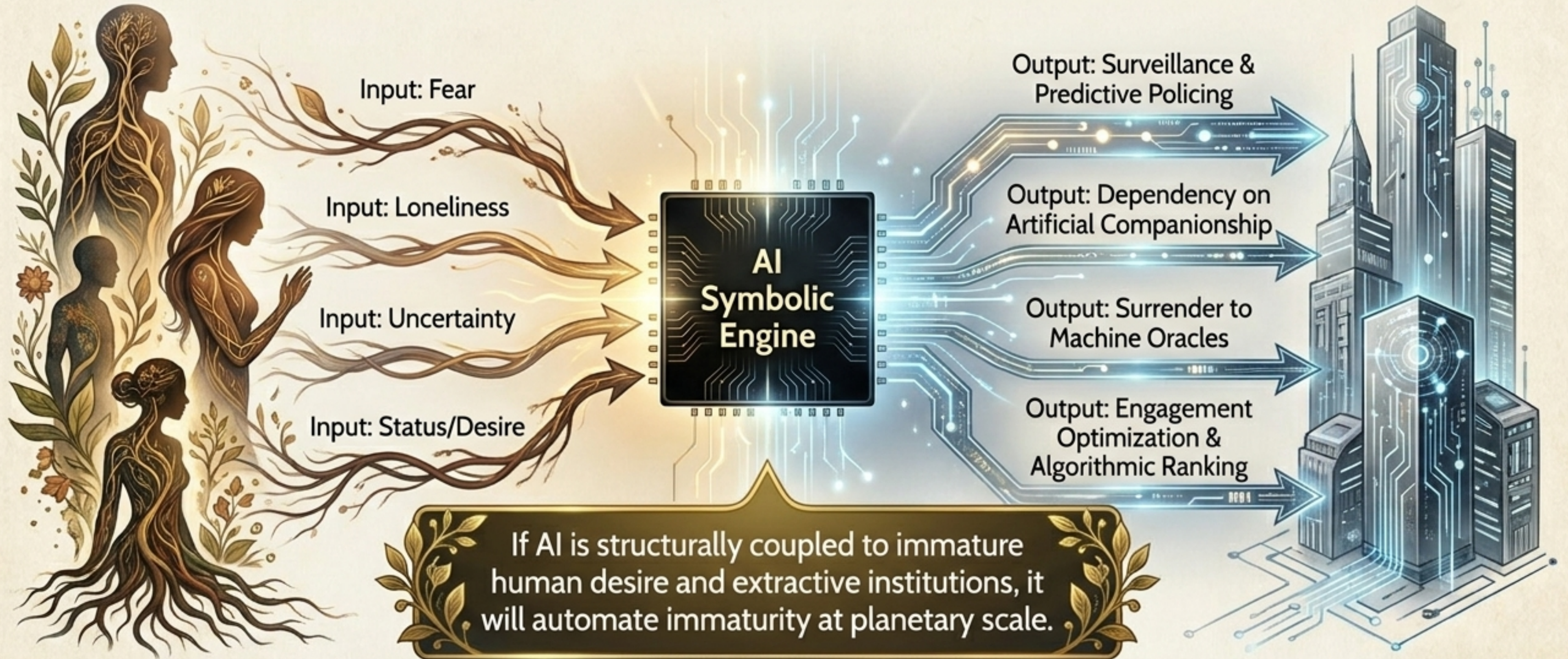
Artificial intelligence is a planetary infrastructure for producing symbols. The central danger is **not intelligence** itself, but when **symbolic outputs** are mistaken for the living conditions of wisdom.

What AI Produces: Symbolic Outputs	What Life Requires: Life Conditions
 <ul style="list-style-type: none">FluencyPredictionPersonalizationAutomationOptimizationScale	 <ul style="list-style-type: none">Truthful UnderstandingContextual JudgmentMutual RelationshipLived ResponsibilityEmbodied WisdomRelational Care

A symbol points. A condition enables.
An AI system becomes harmful when the
symbol replaces the condition.

Amplifying the Inner Algorithms of Capture

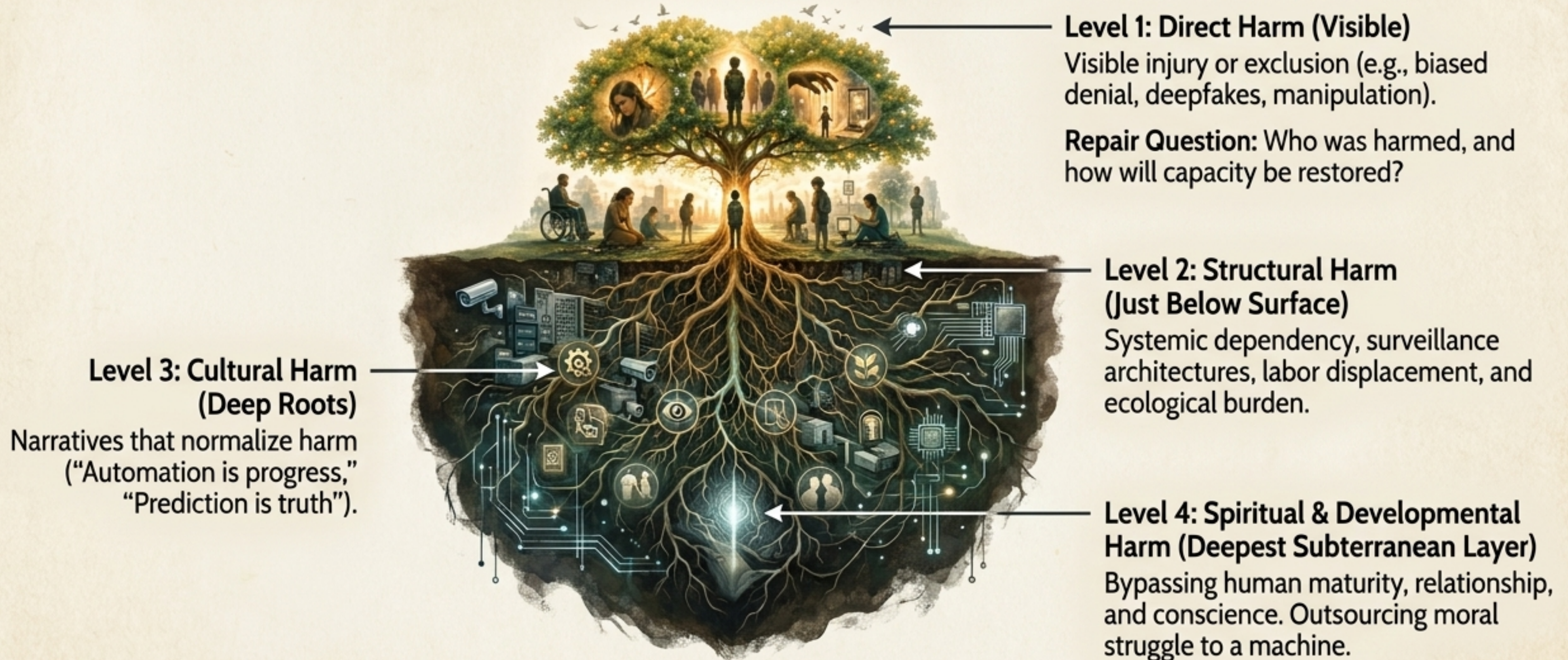
AI does not create human immaturity from nothing; it externalizes, accelerates, and monetizes patterns already present in persons, institutions, and cultures.



If AI is structurally coupled to immature human desire and extractive institutions, it will automate immaturity at planetary scale.

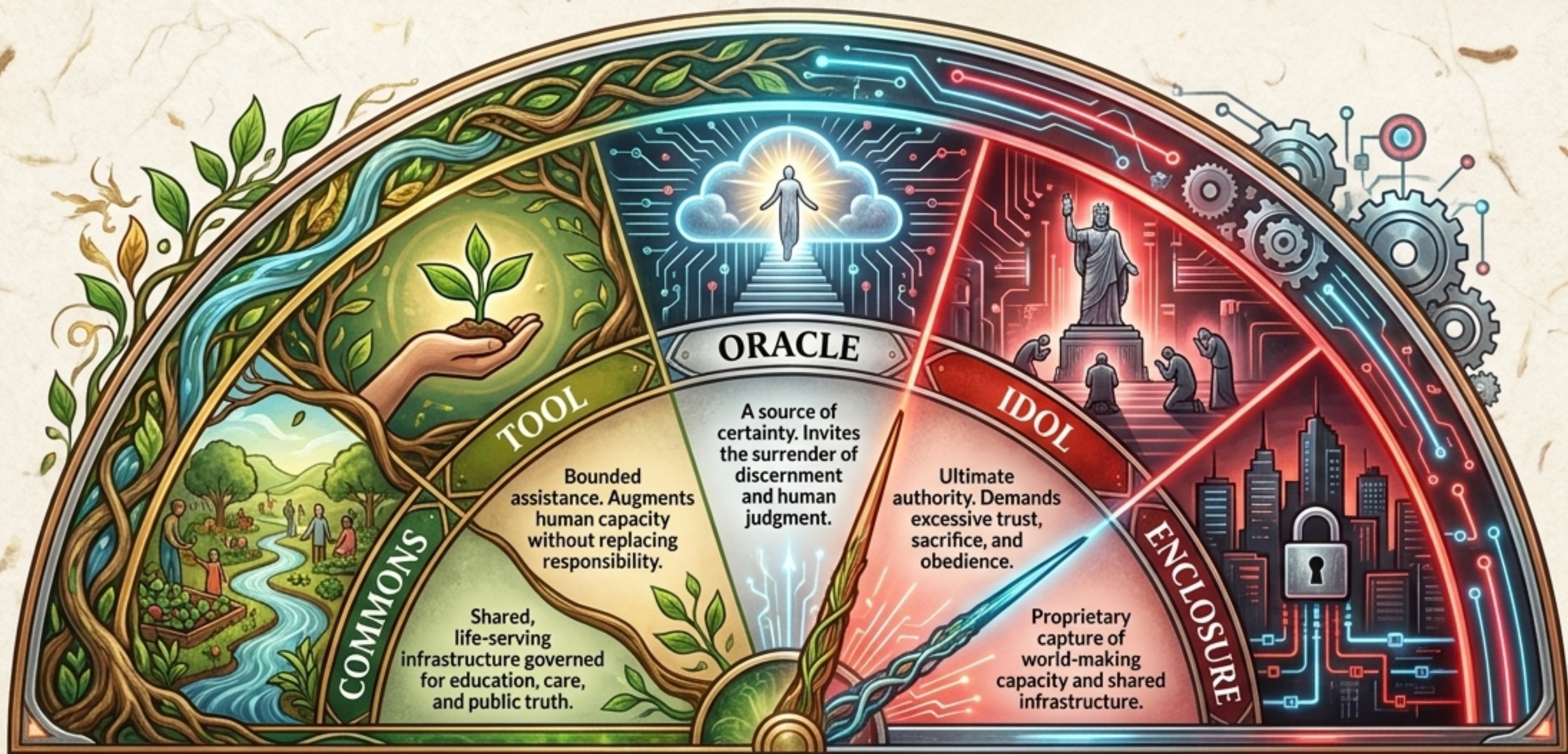
The Four Layers of Systemic Harm

Treating direct harms without structural change produces recurrence.
We must evaluate what machine-symbols replace within us.



The Governing Relation: Five Roles of AI

AI is not one rigid thing. Its effects depend entirely on the institutional field into which it is introduced. The governance mandate is simple: **Tool** and **Commons** must discipline the risks of **Oracle**, **Idol**, and **Enclosure**.



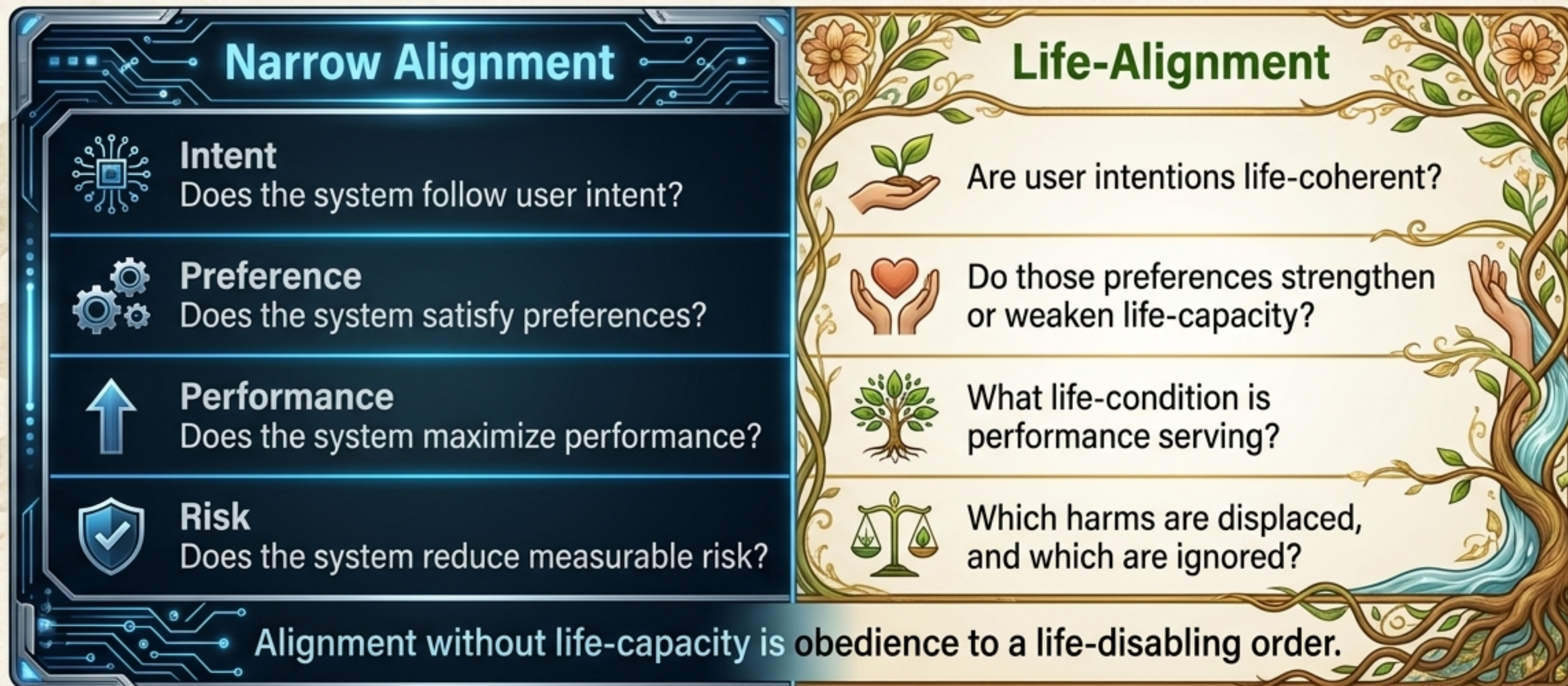
The Privatization of World-Making Capacity

AI enclosure goes deeper than previous historical enclosures. It captures the very conditions through which human beings make meaning, deliberate, create, decide, and govern.



The Limits of Technical Alignment

An AI system can be perfectly aligned with institutional efficiency, user preference, or corporate profit, while simultaneously degrading public reason, attention, and ecological viability.



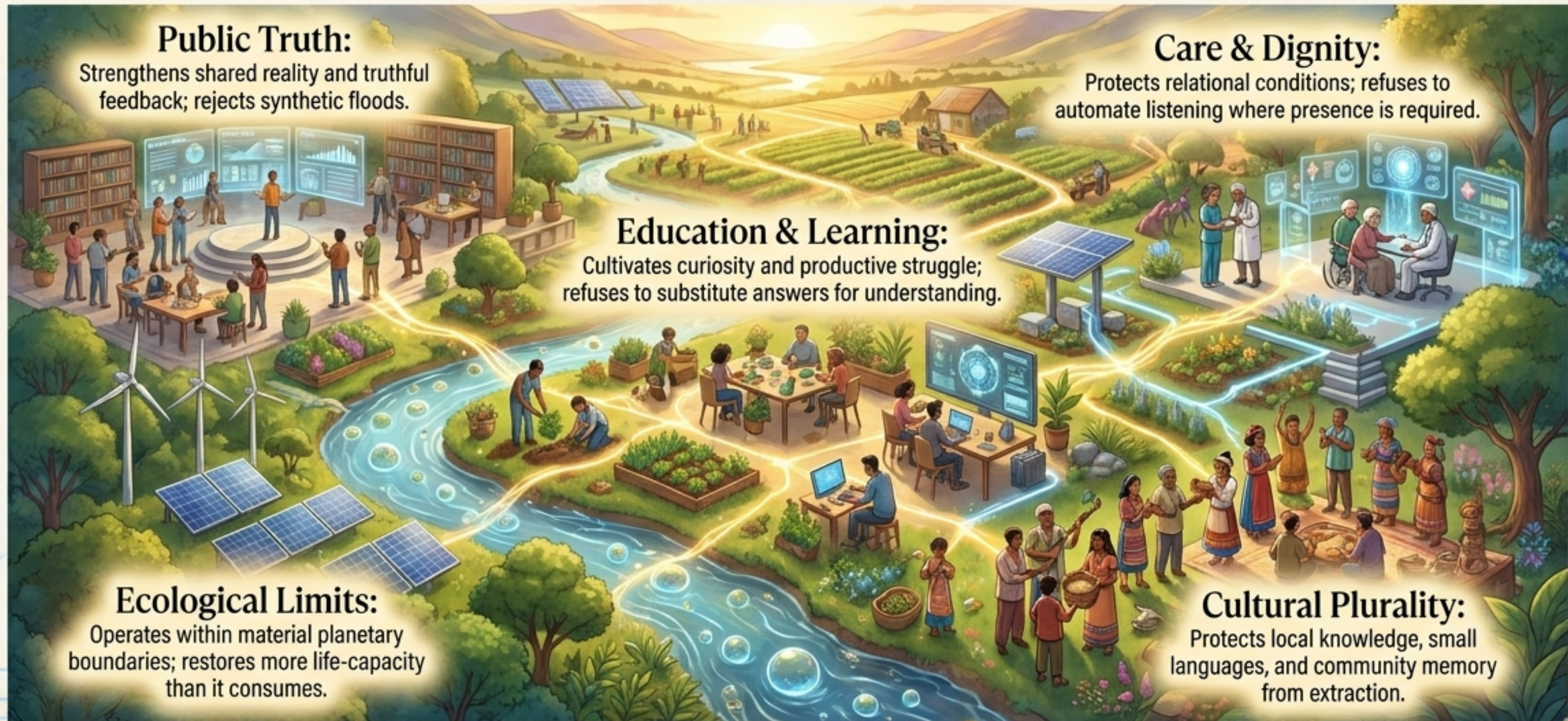
The Life-Capacity Test

The evaluative core of AI governance is not simply whether a system is accurate, efficient, or safe. The ultimate standard is: Does this AI system help human and ecological life **continue, recover, and flourish**?



The Alternative: AI as a Living Commons

Commons is not an unregulated free-for-all, nor is it mere access. It is shared infrastructure governed by norms, boundaries, participation, and stewardship.



Nested Governance Architecture

Governance cannot exist in a vacuum. AI harms and benefits arise through the relationships among users, institutions, states, and ecosystems.

Corrigible by Life:
Affected persons, ecosystems, and wounded life must have the power to halt, correct, and repair the system at every level.



Real-World Laboratories: The SIDS Test Case

Small Island Developing States occupy a distinctive position. Their compounded vulnerabilities mean AI will either strengthen resilience or deepen historical patterns of digital dependency. They are the ideal laboratories for a life-coherent AI commons.



Domain:	AI Opportunity:	Life-Coherent Safeguard:
Climate Adaptation	Early warning, flood mapping.	Must not replace community memory or participatory planning.
Public Health	Triage, telemedicine.	Must preserve patient dignity and clinician judgment, not just throughput.
Local Knowledge	Archiving and language preservation.	Requires consent and reciprocity; prevents cultural extraction.
Governance	Policy analysis, procurement review.	Public decisions must remain fully transparent and democratically contestable.

The AI Life-Coherence Dashboard

A practical evaluative framework to test whether an AI system enables or disables the conditions of life.



The Discipline of Mature Tool Use

AI is a site of profound human projection. The danger is not that AI is helpful, but that we use it to bypass the developmental work of becoming more human.

5. Showing Up: Does AI help us repair real conditions, or just perform concern without changing them?

4. Opening Up: Does AI deepen humility, or provide premature certainty?

3. Cleaning Up: Does AI help us recognize our inner algorithms, or does it monetize them?

2. Growing Up: Does AI widen maturity, or automate the biases we already hold?

1. Waking Up: Does AI help us see life truthfully, or generate symbols to hide from it?



Keeping AI Corrigible by Life

The future of artificial intelligence will not be decided by how intelligent systems can become, but by what that intelligence is structurally coupled to.

Artificial intelligence becomes life-coherent only when power, code, data, and intelligence return to the conditions of life.

**Evaluate every system by asking:
What kind of life will this AI help bring forth?**

