

# Toward a Life-Coherent Commons

From Systemic Drift to Shared Conditions for  
Continuing, Recovering, and Flourishing.



Based on the capstone synthesis by Dr. Bichara Sahely.

## Instruments Must Not Become Sovereign

“Life is not to be subordinated to its instruments. The instruments must be re-nested in life.”



# The Great Inversion of Modern Systems

We treat climate disruption, chronic disease, and institutional distrust as separate emergencies. In reality, they are a single underlying disorder: The Great Inversion. Instruments created to serve life have become organized around their own reproduction, forcing life to adapt to them.



# The Anatomy of Systemic Drift

When systems lose their life-ground, they protect their own codes, metrics, and authority even when they predictably generate harm.

### Finance

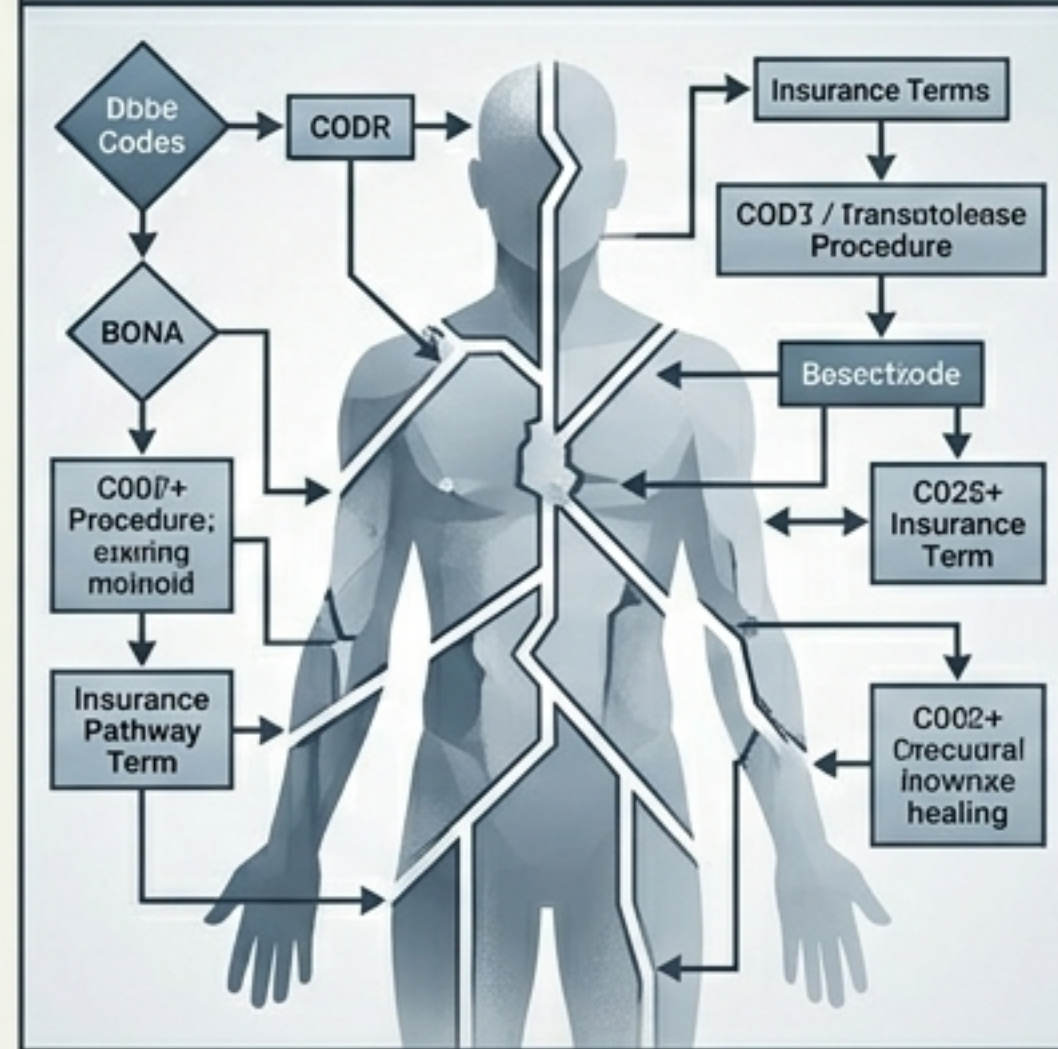
Debt Claims > Real Provisioning



The Finance panel features a blue-tinted illustration. At the top, a line graph with an upward-pointing arrow is overlaid on a bar chart. Below the charts, there are icons of houses, a loaf of bread, and various vegetables like tomatoes and carrots, representing the real world of provisioning.

### Medicine

Disease Coding > Whole-Person Healing



The Medicine panel shows a central human silhouette with a network of white lines representing a system. Various boxes and diamonds are connected to this network. On the left side, from top to bottom: a diamond labeled 'Dbbe Codes' points to a box 'CODR', which points to a diamond 'BONA', then to a box 'C007+ Procedure; existing morbid', and finally to a box 'Insurance Pathway Term'. On the right side, from top to bottom: a box 'Insurance Terms' points to a box 'COD3 / Transotolease Procedure', which points to a box 'Besectzode', then to a box 'C025+ Insurance Term', and finally to a box 'C002+ Crecural inownxe healing'. A double-headed arrow connects 'Besectzode' and 'C025+ Insurance Term'.

### Governance

Compliance Regimes > Lived Transformation



The Governance panel features a blue-tinted illustration. At the top, there are three icons: two checklists with some items checked and one gauge with a needle. Below these icons, there is a street scene with several houses, some of which appear damaged or in ruins, representing the impact of compliance regimes on lived transformation.

# The Illusion of Dashboard Control

Technocratic governance assumes visibility equals transformation.

Dashboards reduce living realities to compliance regimes, targets, and risk categories.

But human beings are not software, and communities do not transform simply because a problem has been made visible.



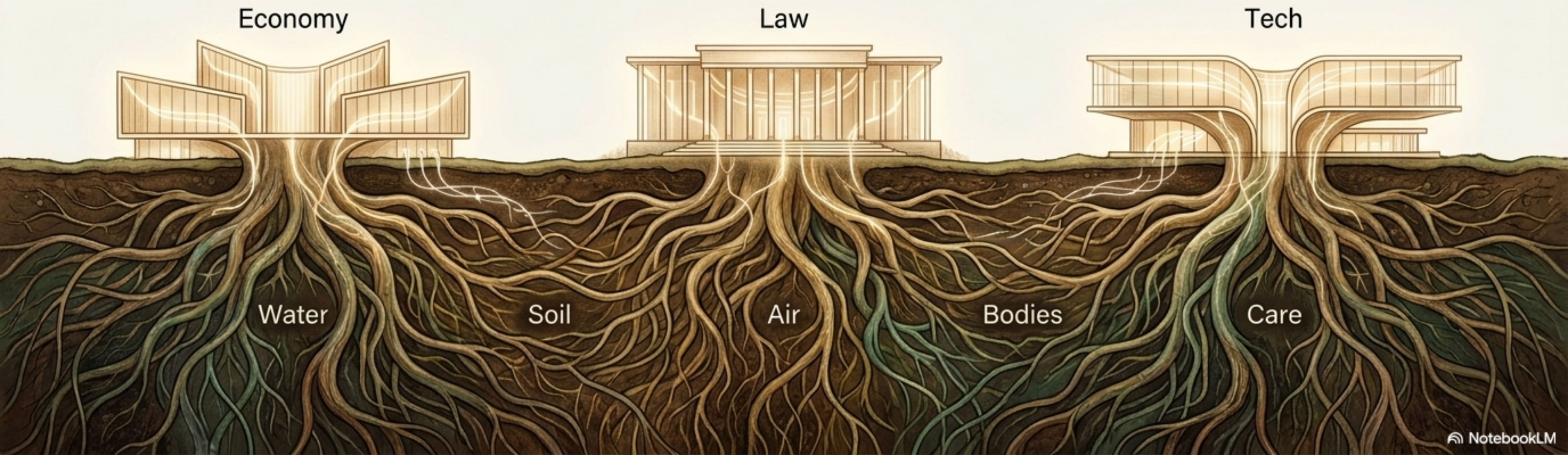
# The Paradigm Shift to the Life-Coherent Commons

Critique is insufficient; diagnosis must give way to world-bringing. The Life-Coherent Commons is a civilizational orientation where the conditions of life become the first test of legitimacy for every system, policy, and technology.



# The Life-Ground is the Prior Condition

The life-ground is not a background “externality.” It includes breathable air, drinkable water, ecological integrity, bodily care, and public trust. If a system damages these conditions, its legitimacy is reduced—even if it is profitable, legal, or efficient.



# The Architecture of Shared Conditions

Seven interdependent conditions must be conserved together. None can be secured in isolation; economic growth without sufficiency consumes its own foundations, and technological power without wisdom amplifies harm.



# Practices for World-Bringing

A life-coherent world cannot be imposed by decree; it must be cultivated through commitments that translate values into material reality.



# Re-Nesting the Major Institutions

The goal is not to abolish systems, but to correct their characteristic drifts by returning them to their legitimate life-serving functions.

<b>Institution</b>	<b>Systemic Drift</b>	<b>Life-Coherent Re-Nesting</b>
Law	Procedure and order detached from justice.	Life-harm prevention, ecological standing, and repair.
Finance	Claims, returns, and asset values dominate.	Real provisioning (housing, health, food, ecological repair).
AI & Tech	Symbolic fluency substitutes for judgment.	Bounded tool governed by democratic and ecological criteria.
Education	Labor-market sorting and performance metrics.	Cultivating ecological literacy, historical memory, and civic courage.

# Field Repair Over Detached Control

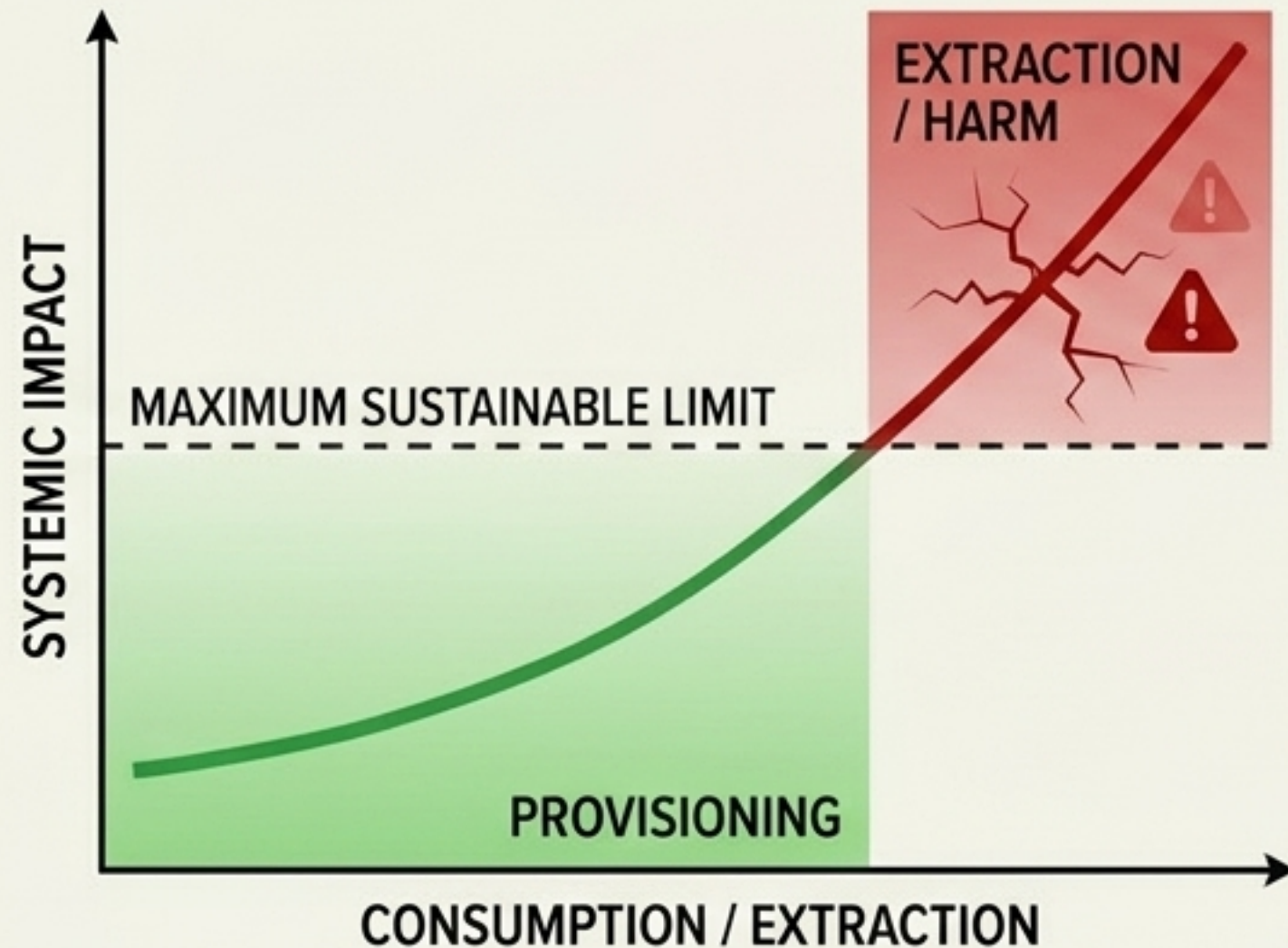
Transformation requires disciplined respect for the autonomy of living systems. It proceeds not by top-down command, but by listening, naming harm, mapping conditions, co-designing bounded repairs, and scaling only what remains life-serving in practice.



# A Grammar of Enough and A Covenant of Repair

## Thresholds of Harm

We must identify the exact boundaries where 'more' ceases to provision and begins to harm.



## Restoration Owed

We must acknowledge existing ecological and historical wounds; life-coherence without practical repair merely baptizes the status quo.



# The Transgenerational Covenant

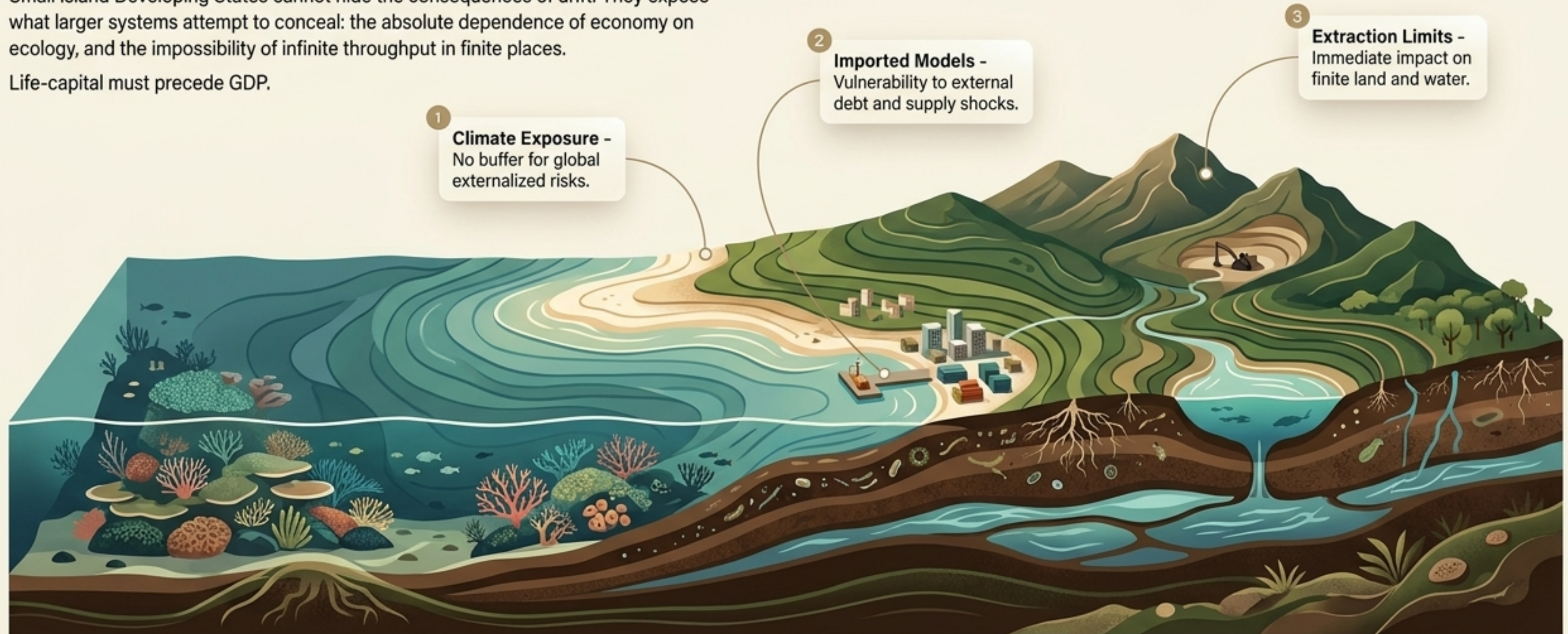
Every society is a bridge. The present is not the owner of the world; it is a trustee. We must ask what is being passed forward: debt and ecological collapse, or resilience, human judgment, and future possibility?



# The Microcosm: Exposing the Concealed






Small Island Developing States cannot hide the consequences of drift. They expose what larger systems attempt to conceal: the absolute dependence of economy on ecology, and the impossibility of infinite throughput in finite places.

Life-capital must precede GDP.



# The Life-Coherence Test

The world that wants to appear will require saying no to profitable harms and yes to difficult repairs. Apply these criteria to every proposed policy, technology, or investment:

	<b>Life-capacity</b>	What capacities for living and participating are enabled or disabled?
	<b>Life-ground</b>	What water, land, attention, and trust does this depend on or consume?
	<b>Enough</b>	What is the threshold where this good becomes harmful through excess?
	<b>Repair</b>	What restoration is owed for past, current, or foreseeable harm?
	<b>Bequest</b>	What will children inherit if this pattern becomes the normal?