

The Tears of Life

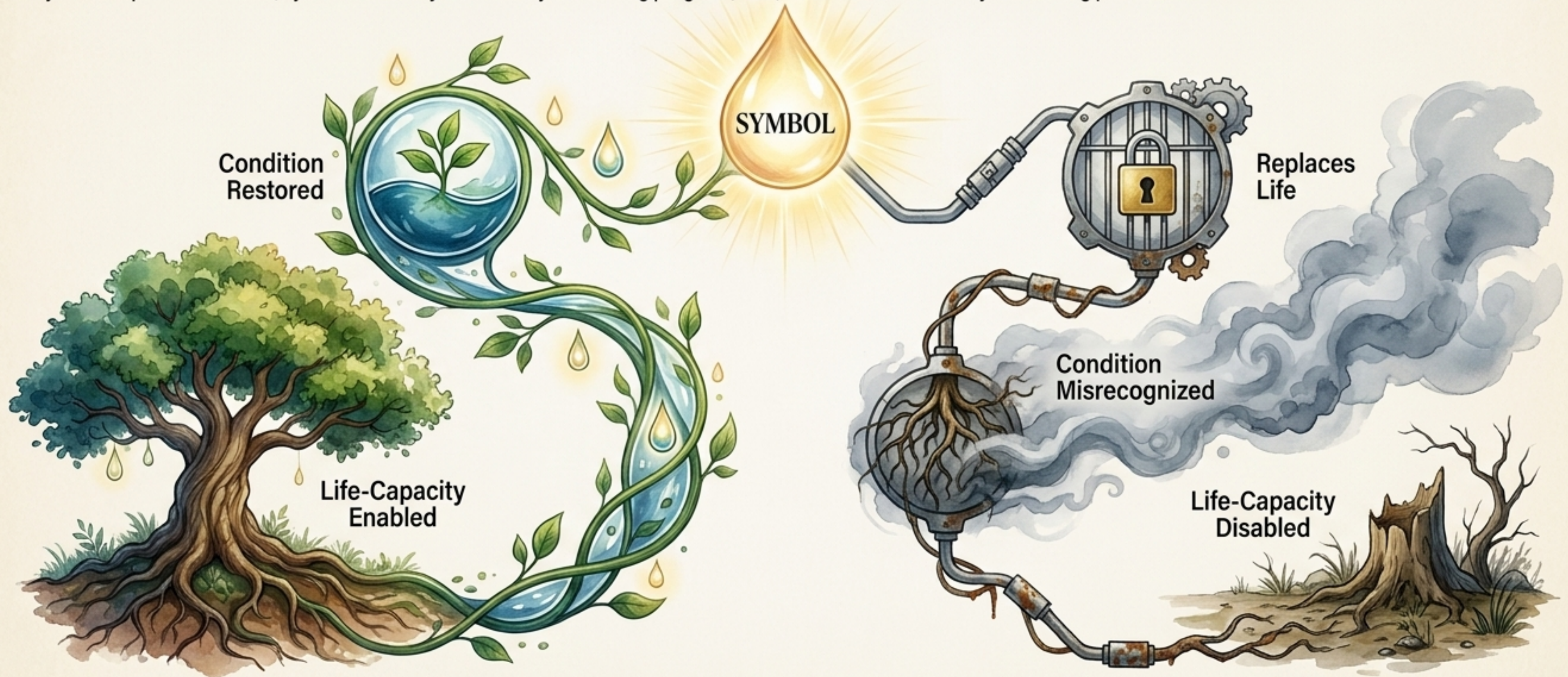
A Life-Coherent Framework
for Recognizing Harm,
Restoring Conditions, and
Reorienting Power.

Based on the work of Dr. Bichara Sahely




The Crisis of Symbolic Substitution

A symbol points to meaning. A condition enables life. Our modern crises are not failures of technology or management; they are failures of recognition. When symbols replace conditions, systems sincerely believe they are serving progress, love, or value—while actively conserving patterns that disable life.



The Illusion of Performance Across Human Systems

Domain	The Symbol Preserved	The Condition Ignored	The Hidden Harm
 Economics	Price & Growth	Ecological Viability	Extraction & Insecurity
 Medicine	Treatment & Compliance	Healing & Function	Burnout & Fragmentation
 Politics	Representation	Participation	Alienation & Coercion
 Artificial Intelligence	Output & Intelligence	Wisdom & Truth	Enclosure & Capture

Harm is Lived, Built, and Believed

Direct Harm: The Visible Wound

Physical injury, exclusion, psychological trauma, deprivation.

Cultural Harm: The Symbolic Veil

Ideologies, metrics, and performances that normalize the harm and sanctify the status quo.

Structural Harm:

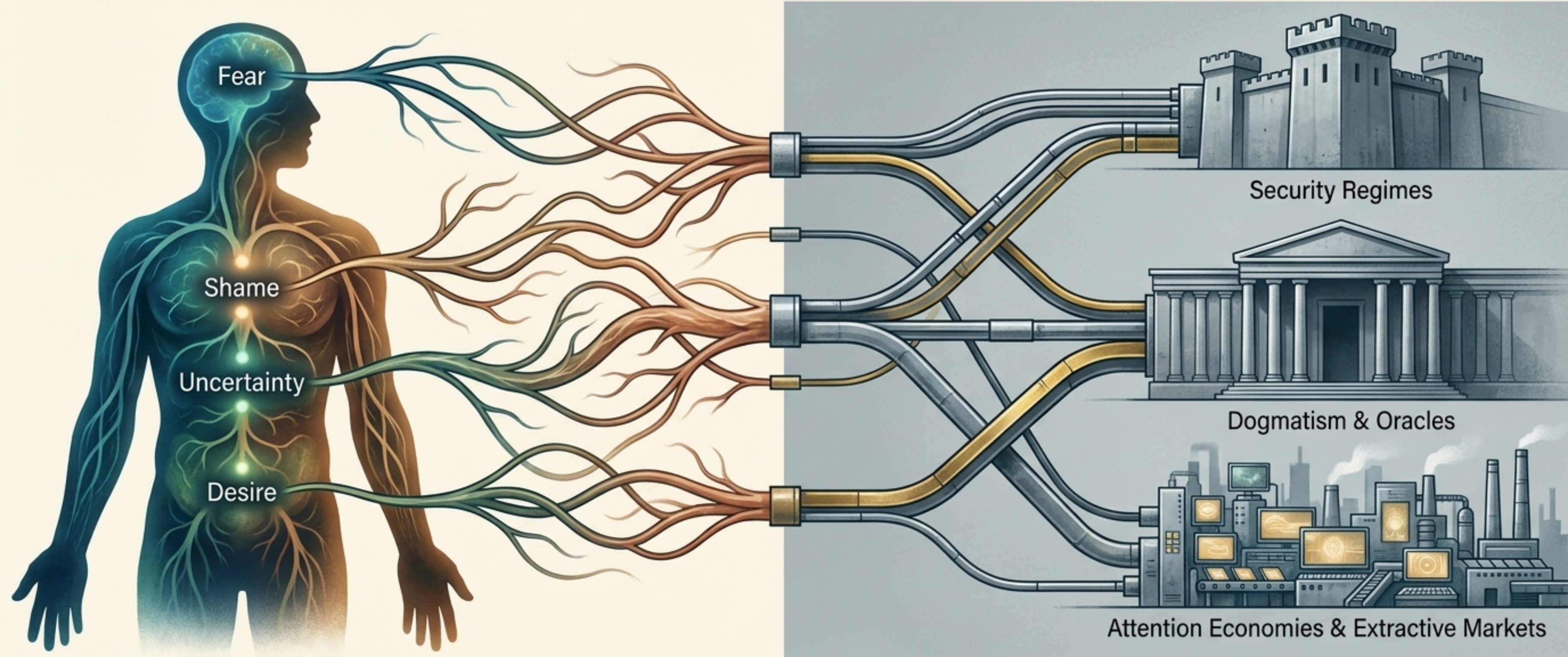
The Hidden Architecture

Inequitable institutions, resource extraction, concentrated power, and economic incentives that distribute burden unequally.

Key Insight:

Symbolic substitution is the ultimate cultural harm. It captures our language, creating a veil that makes the life-test impossible to ask.

Before Artificial Intelligence, There Are the Algorithms Within



Human survival patterns become harmful when they are unexamined, institutionalized, and scaled through systems that conserve fear, control, or desire rather than life-capacity.

Outrage Notices Violation, Tears Restore Attunement

The Wound → Outrage

Reaction: "This shouldn't happen."
Outrage registers violation but can become performance or hatred if used.



The Tears

Attunement: "Something living is hurt."
The tears restore attunement and prevent analysis from becoming cold.



Prophetic Repair

Action: Truthful Naming →
Compassion → Repair.



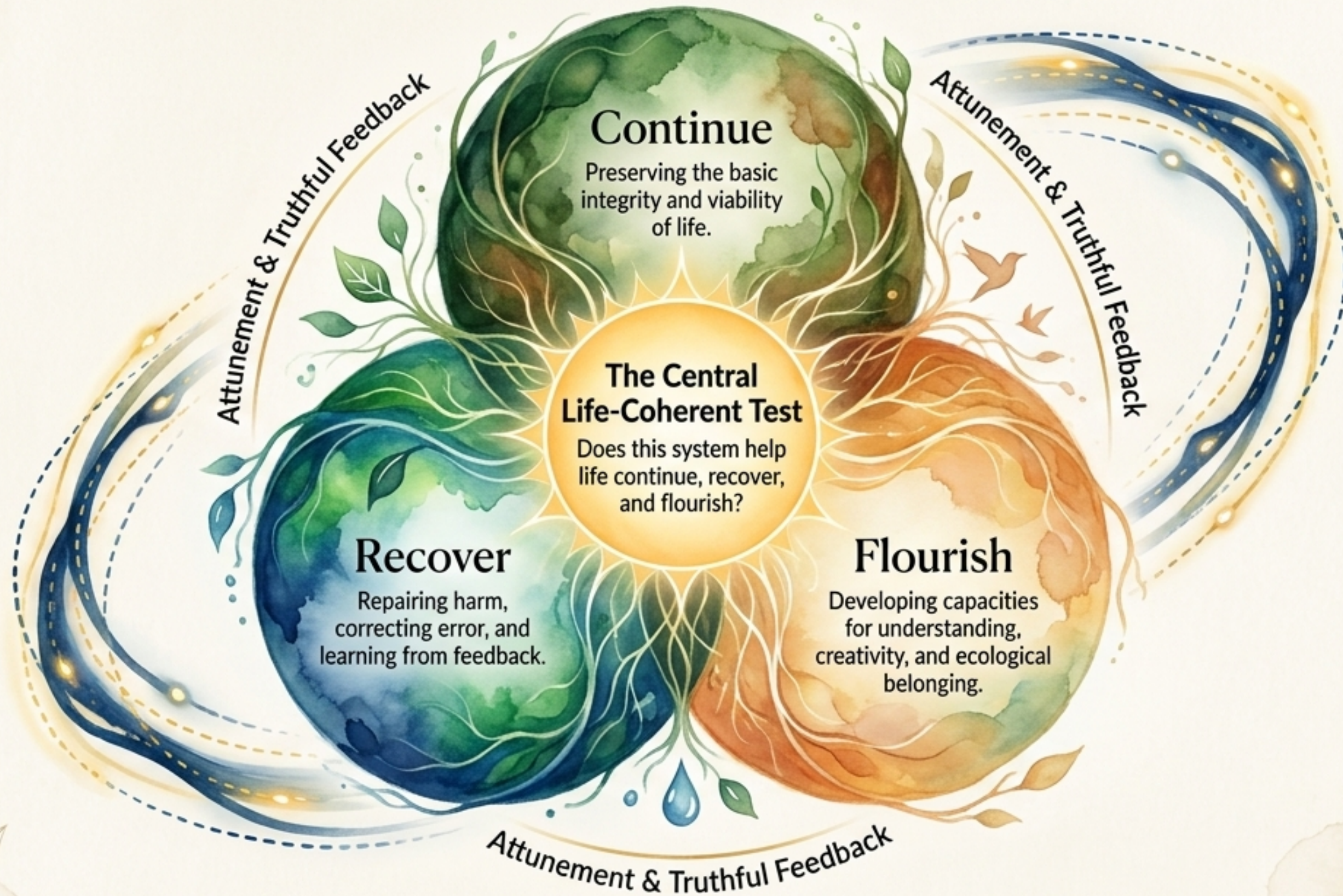
Reaction: "This shouldn't happen."
Outrage registers violation but can become performance or hatred if untransformed.

Attunement: "Something living is hurt."
The tears restore attunement and prevent analysis from becoming cold.

Action: Truthful Naming
→ Compassion → Repair.

Outrage without tears becomes hatred or performance.
Tears return the system to wounded reality,
making real truth-telling and repair possible.

The Universal Grammar of Life



Performative Care vs. Life-Coherent Repair

Performative Mode

We consulted

Procedure replaces participation

We innovated

Novelty replaces wisdom

We apologized

Regret replaces repair

We are sustainable

Green symbol replaces ecological repair

The Life-Condition Question

Who can actually influence the outcome?

What life-capacity is actually restored?

What has materially changed?

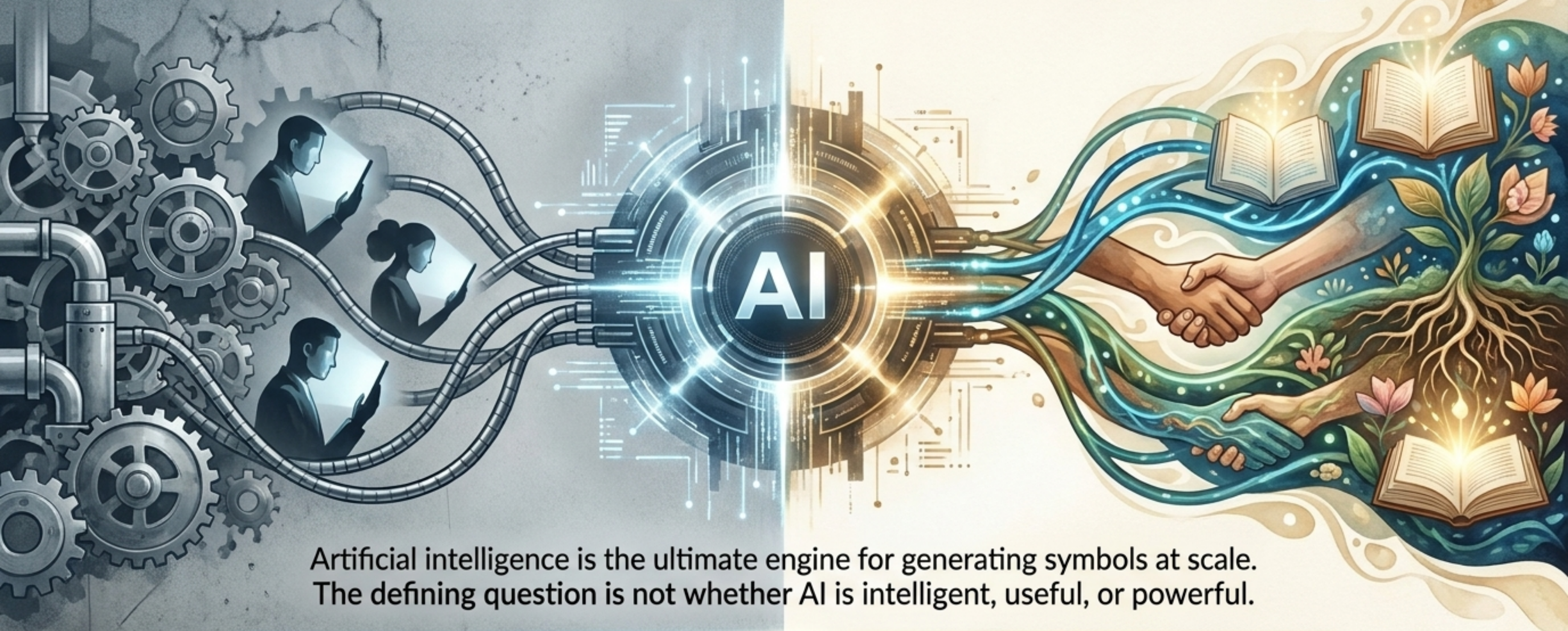
Is the life-ground recovering?

A Practical Grammar for Restoring Life



Repair means restoring the conditions through which life can continue and recover. It is not merely an apology or a technical adjustment.

AI: The Defining Stress Test of Our Age



Artificial intelligence is the ultimate engine for generating symbols at scale. The defining question is not whether AI is intelligent, useful, or powerful.

Will machine intelligence become structurally coupled to human immaturity and commercial extraction, or will it be governed by the real conditions of life-capacity?

The Paths of Capture: When Symbols Govern AI



The Oracle

AI as a source of certainty.

The Risk: Surrender of human judgment, plural discernment, and contextual responsibility.



The Idol

AI as ultimate authority.

The Risk: Excessive trust and obedience; sacrificing privacy, agency, and freedom to preserve machine expansion.



The Enclosure

AI as a system of capture.

The Risk: Privatizing the conditions of meaning-making; capturing attention, language, labor, and public reasoning.

If fear, extraction, or attention capture governs the system,
AI will scale these pathologies to a planetary level.

The Paths of Life-Coherence: When Capacity Governs AI

THE TOOL



Bounded, transparent, and accountable assistance.

Subject to human oversight; enhances life-capacity rather than replacing human agency.

THE COMMONS



Shared infrastructure for life.

Governed for public truth, ecological limits, and shared stewardship of technology for life-flourishing.

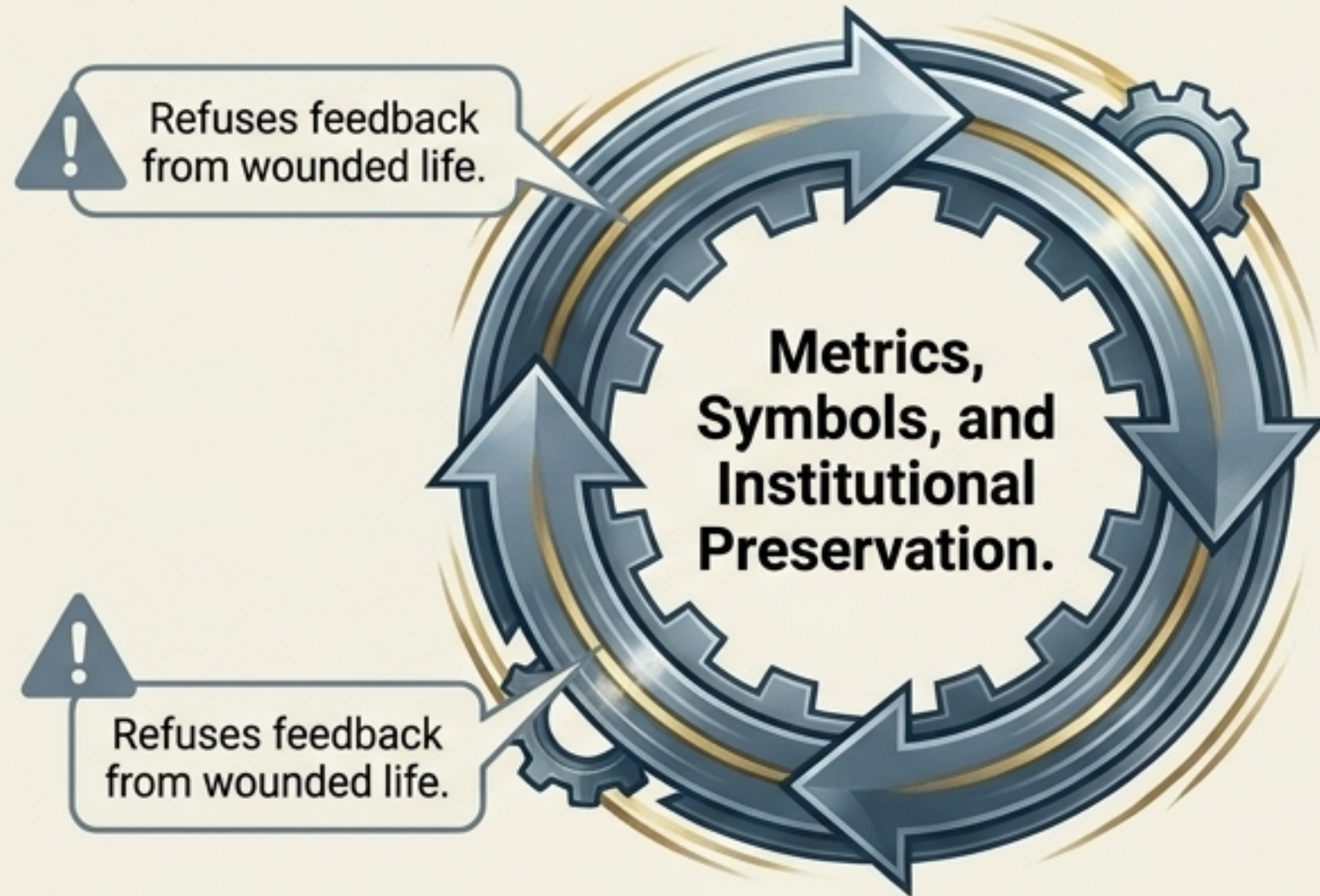
AI becomes life-coherent only when it remains a servant to the conditions through which human and ecological life continue, recover, and flourish.

The AI Governance Choice Matrix

AI Mode	Human Need	Primary Risk	Life-Coherent Safeguard
Tool	Assistance/productivity	Hidden dependency	Keep bounded and transparent
Oracle	Certainty/orientation	Surrender of judgment	Preserve human responsibility
Idol	Salvation/authority	Excessive trust/sacrifice	Keep AI corrigible by life
Enclosure	Convenience/scale	Capture of attention/language	Protect public commons
Commons	Shared learning/care	Governance failure	Public-interest design within ecological limits

Life-Coherence is the Ultimate Governance Model

THE CLOSED LOOP



THE OPEN LOOP



The task is not to reject technology, religion, economics, or politics. The task is to keep every system capable of receiving feedback from the 🌱 life it affects. The symbol must return to the condition.

From Symbolic Performance to Real Repair



Where the wound is seen,
Where the tears are allowed,
Where the false order is named,
Where conditions are restored...
**POWER RETURNS TO SERVICE,
AND LIFE BEGINS AGAIN.**