



LIFE-COHERENT TRANSITION

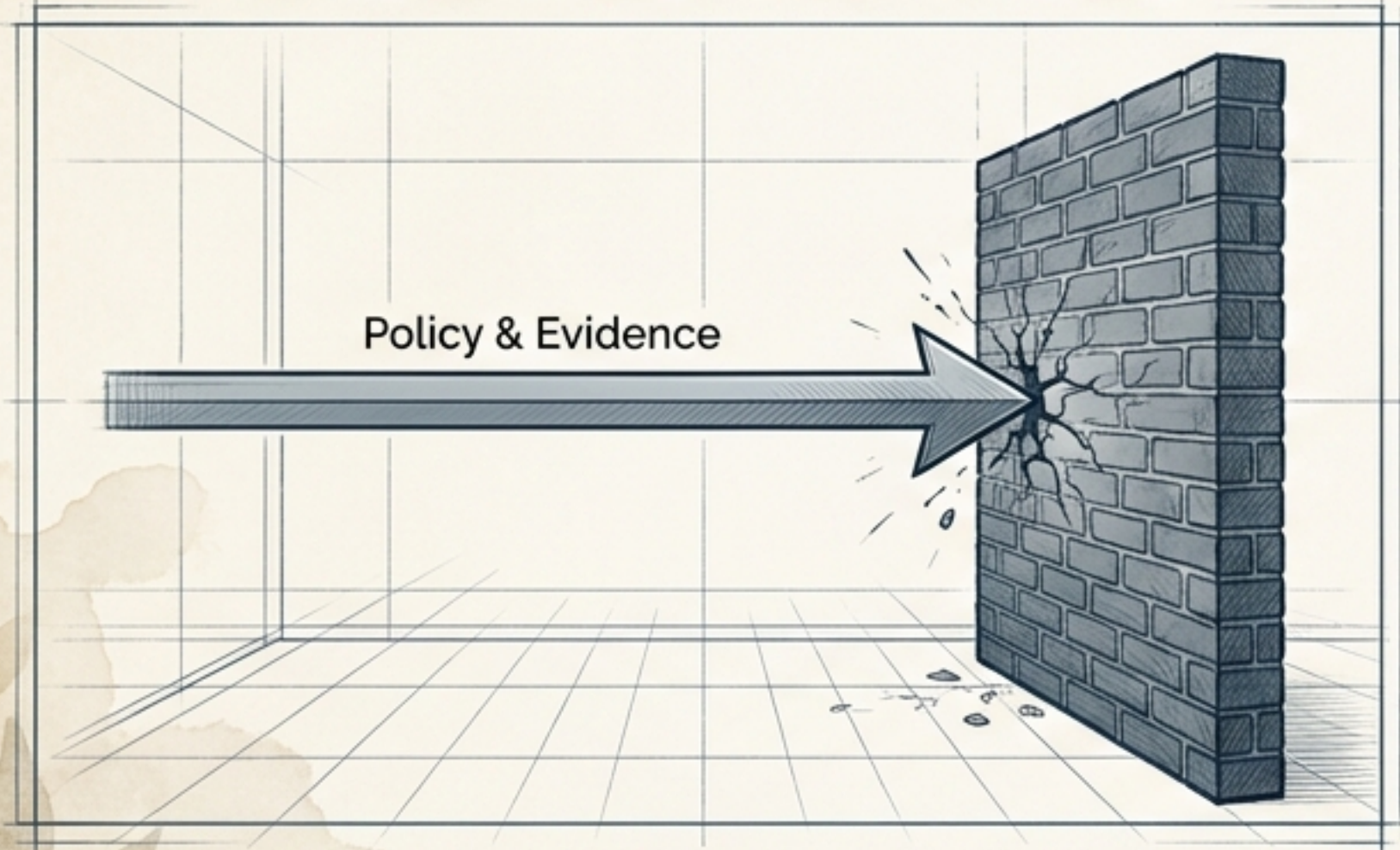
Bridging Technical Precision
with Lived Transformation

Based on the Maturana-Informed Framework
by Dr. Bichara Sahely

The Implementation Chasm

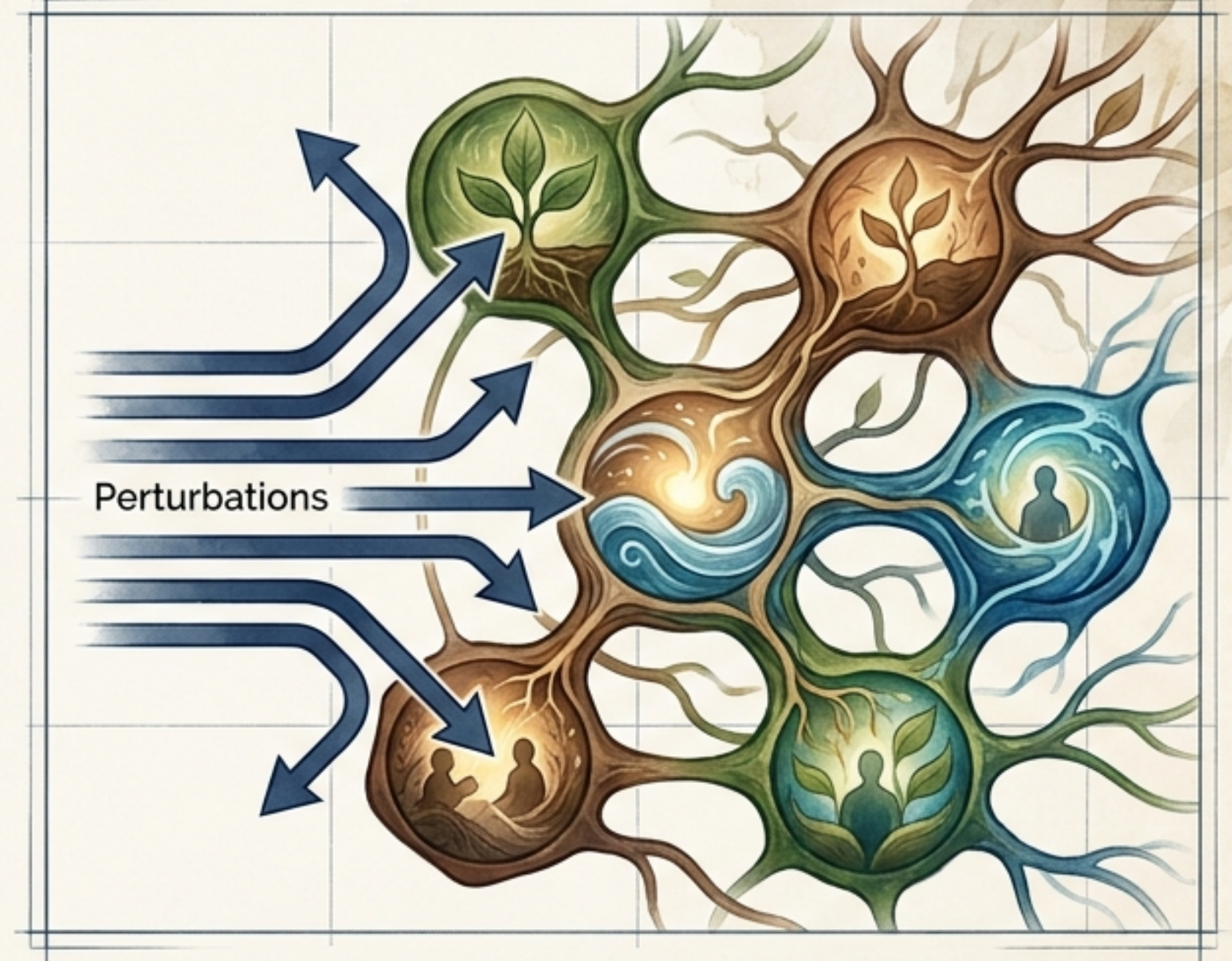
Evidence matters, but evidence does not determine transformation.

The Illusion of Information Transfer



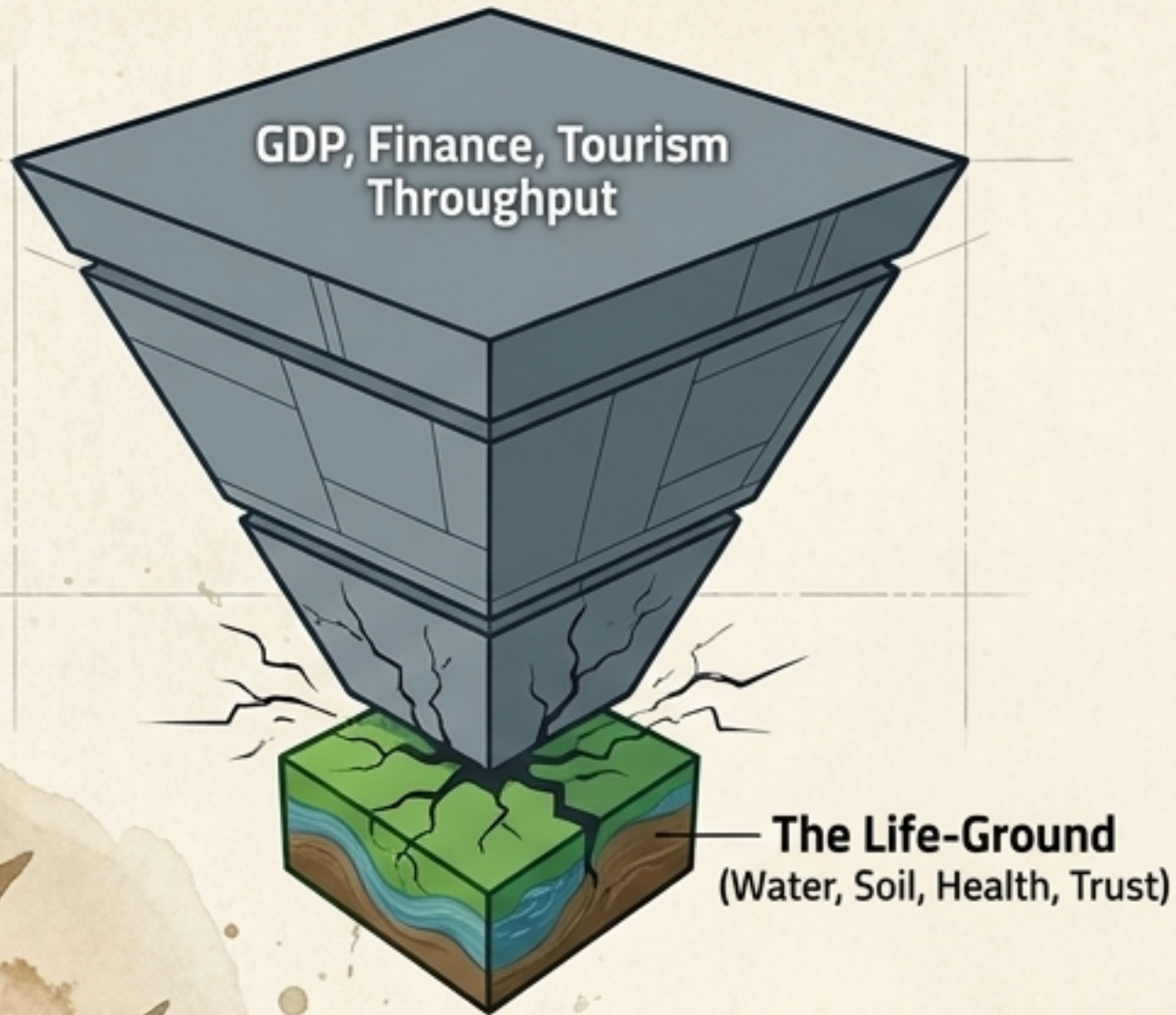
Conventional policy assumes that if data is clear, action will logically follow. It treats stakeholders as empty vessels waiting for instruction.

The Reality of Structural Determination



Living systems are structurally determined. A report, dashboard, or policy functions as a perturbation, not an instruction. Each stakeholder responds based on their own history, pressures, and conserved concerns. Information cannot force compliance; it must be brought into structural coupling.

The Diagnosis: Mis-Nesting vs. Re-Nesting







Mis-Nesting: Occurs when secondary, abstract systems (finance, targets, markets) dominate, distort, or degrade the primary life-support systems they are meant to serve. The score rises while the ground beneath daily life weakens.



Re-Nesting: The governance discipline of returning economic, technological, and policy systems to their proper place. It does not reject economic activity; it asks these systems to serve life-capital rather than substitute for it.

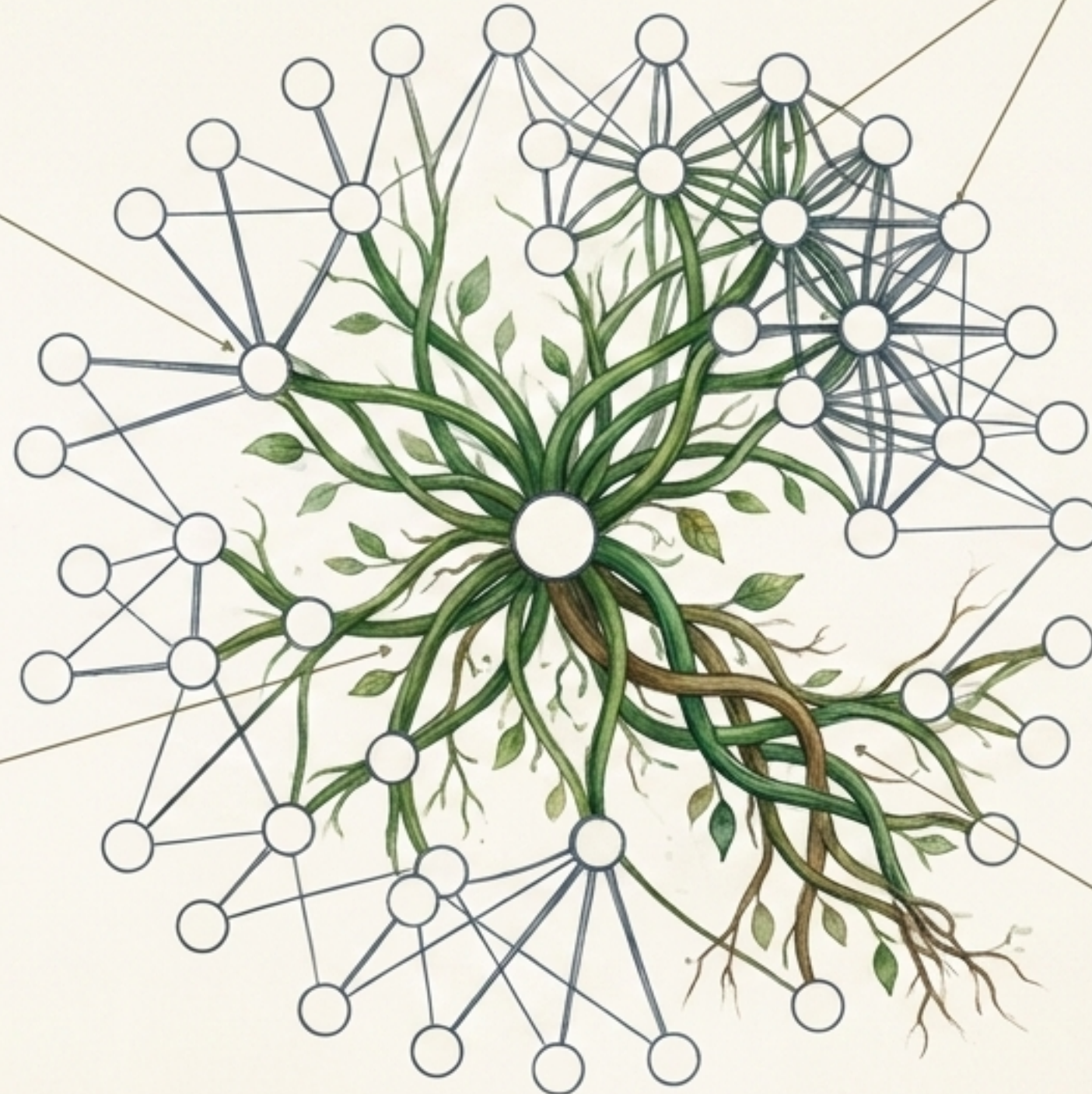
The Lexicon of Life-Coherence

The Distinction	Technical Architecture	Lived Translation
Life-Ground 	The biophysical, social, cultural, and relational conditions that make life possible.	What keeps daily life alive: water in the tap, safe streets, healthy bodies, and trust.
Life-Capital 	The accumulated capacity of the life-ground to sustain and regenerate life over time.	The real wealth we pass on: fertile soil, capable youth, and trusted institutions.
Civil Commons 	Shared institutions and protections that enable people to access the conditions of life.	What we build and protect together so no one has to survive alone.
Hidden Liabilities 	A real cost displaced into bodies, ecosystems, or future budgets.	A problem ignored now that people or future generations will pay for later.

The Paradigm Shift: Maturana's Biology of Knowing

Structural Coupling: Living systems do not change in isolation. They change through recurrent interactions with their environments and each other, slowly forming patterns of mutual responsiveness.

Languaging: Language is not merely the transmission of information to describe an external world; it is the coordination of action among people.



Emotioning: Emotions are not subjective noise that interferes with reason; they define the domain of actions that are possible (e.g., fear closes worlds, dignity opens them).

Legitimacy of the Other: Coexistence requires encountering stakeholders as valid living beings in their own domain of existence, not merely as obstacles or implementation targets.

Stakeholders as Legitimate Worlds

What is each stakeholder trying to conserve?



Conserves fiscal stability, debt credibility, and payroll. Fears future expenditure shocks.



Conserves destination reputation, occupancy, and investor confidence.



Conserve belonging, agency, recognition, and future possibility.



The Shared Life-Ground

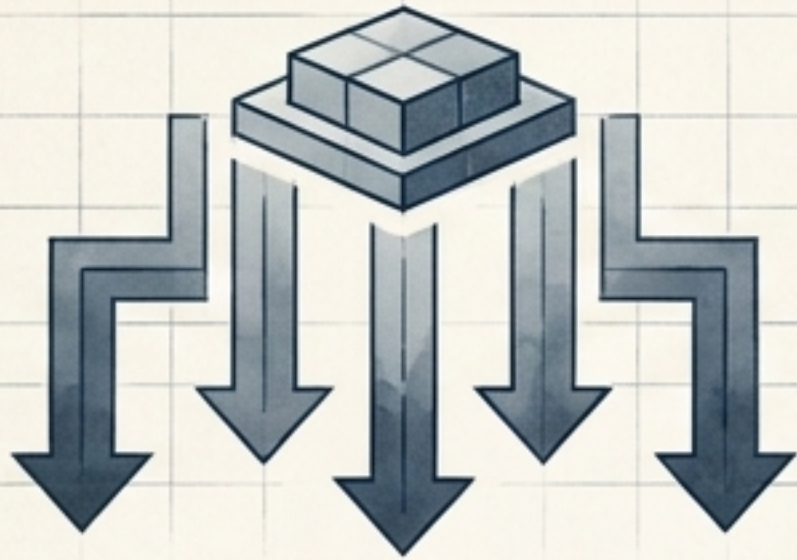


Conserve land, water access, fair markets, livelihood continuity, and dignity.

Insight: Transition cannot ask stakeholders to abandon their worlds. It must re-nest their conserved concerns truthfully within the wider life-ground.

From Buy-In to Co-Ownership

The Buy-In Model



- Designed elsewhere, delivered down.
- Asks stakeholders to accept a pre-designed framework.
- Relies on persuasion and communication strategy.
- Treats resistance as an obstruction to be managed.
- Consultation gathers feedback but preserves control over the frame.

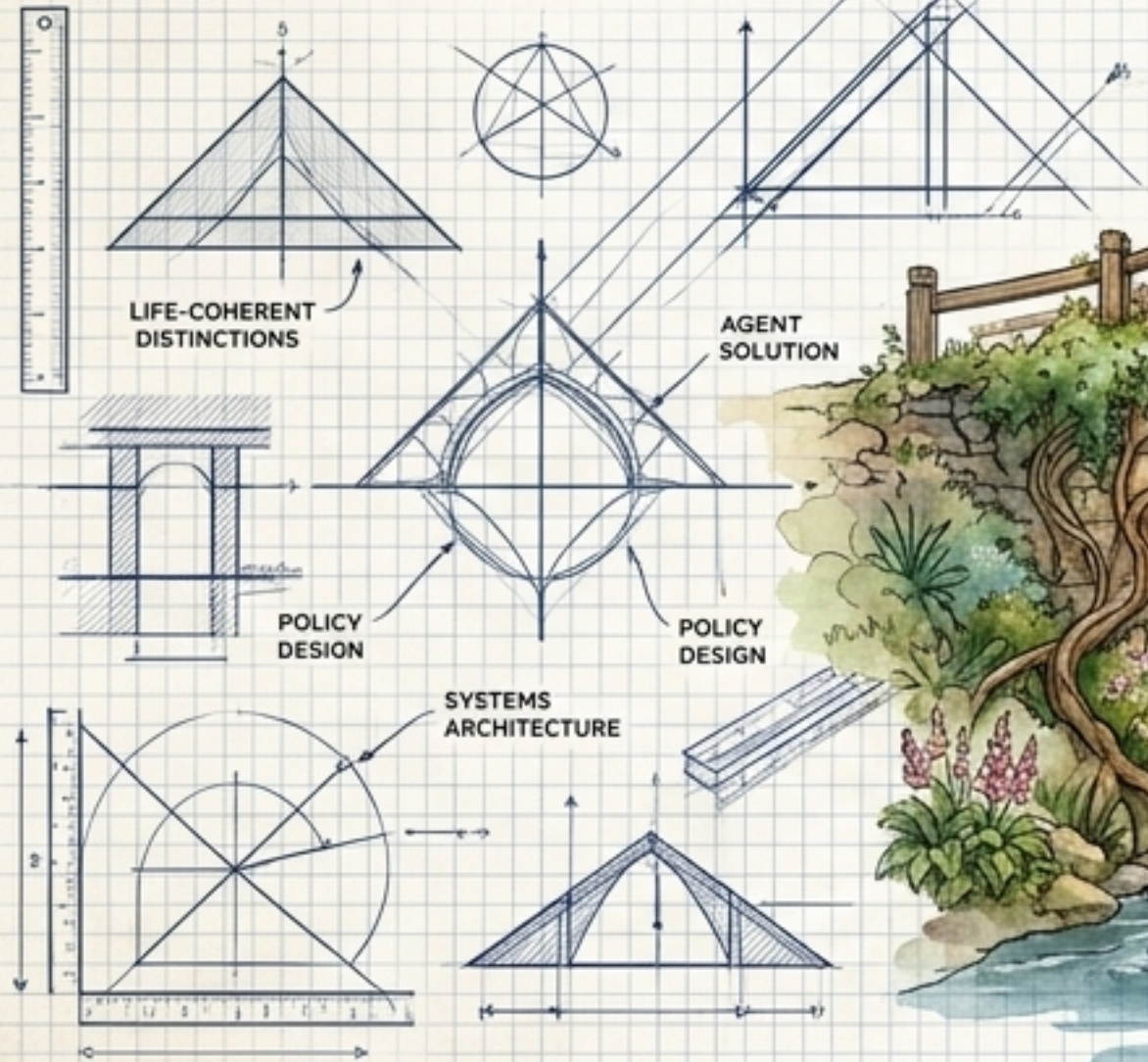
The Co-Ownership Model



- Designed together, evolving together.
- Asks stakeholders to participate in bringing forth a shared world.
- Relies on **recurrent structural coupling** and **shared learning**.
- Treats resistance as vital information about the structure of the field.
- Participation shapes decisions, pilots, and accountability.

The Bridge: Right Distinction meets Right Relation

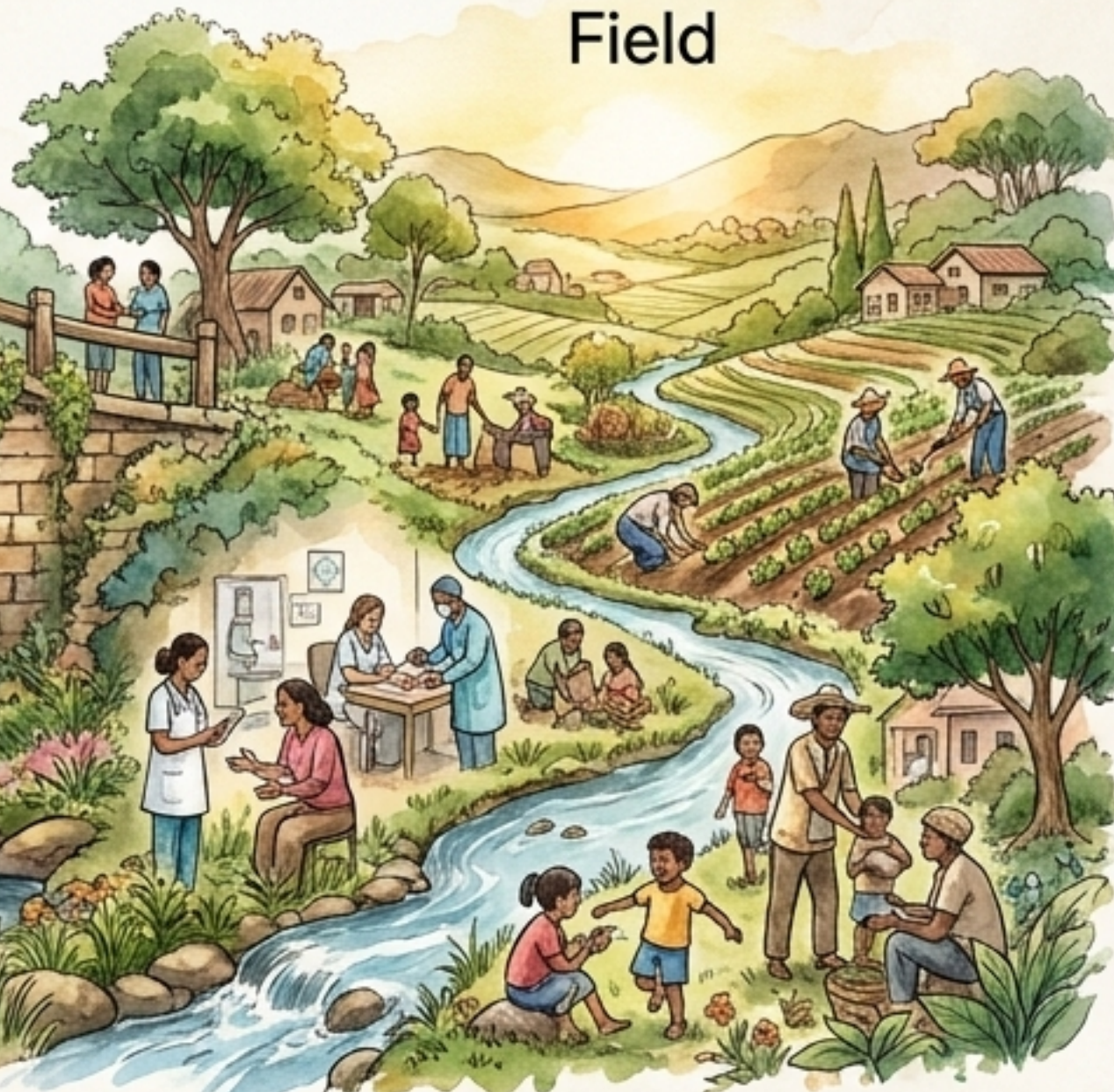
Framework



Relational Praxis



Field



A framework becomes real only when it crosses into life through relationship, trust, shared action, and co-ownership. Without right distinction, transition dissolves into vague aspiration. Without right relation, it hardens into expert control. The bridge between the two is Relational Praxis.

The Relational Praxis Spiral

7 Reflect without blame:
Use disappointing results as system feedback, not fuel for accusation.



6 Measure what matters together:
Shift from expert surveillance to shared seeing.



2 Translate distinctions: Map technical concepts into stakeholder worlds.



1 Listen for conserved concerns:
Identify what stakeholders fear losing.



8 Adapt and institutionalize:
Embed successful patterns into rules, budgets, and roles.



5 Pilot visibly:
Create lived demonstrations of possible worlds.



4 Co-design interventions:
Bring technical expertise and lived knowledge together.

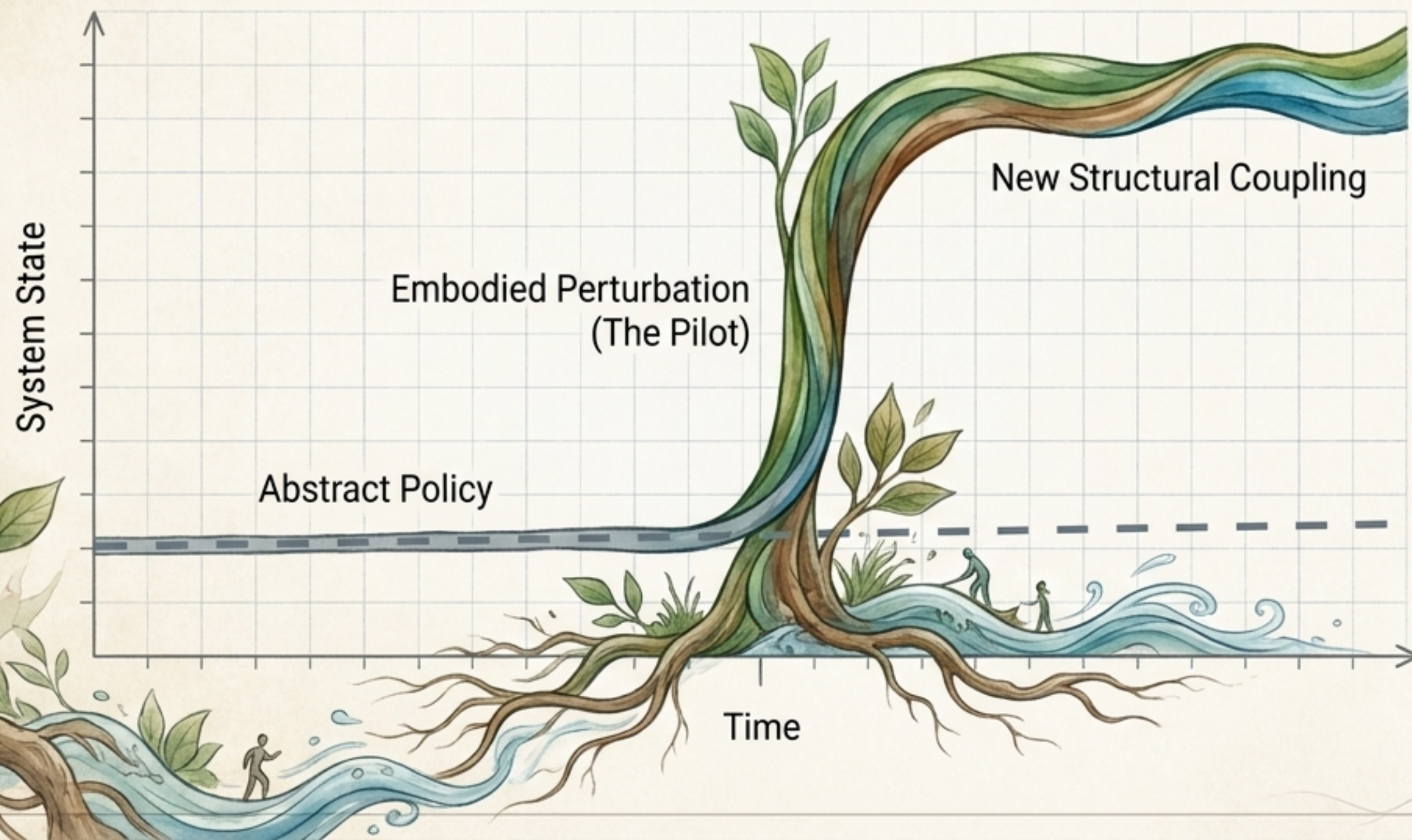


3 Identify shared pressures: Reveal hidden liabilities connecting fragmented issues.



Pilots as Embodied Perturbations

Insight: A proclamation can announce a transition, but it cannot embody one. Pilots matter because they give life to possibility.



In a structurally determined system, information can perturb but cannot determine a response. A pilot, however, perturbs through experience.

It allows stakeholders to see, touch, use, and narrate a new pattern. It proves that a different way of organizing life is not only conceptually desirable but practically imaginable before stakeholders are fully asked to accept it.

Real-World Manifestations

Water-First Communities

Beyond leak repair—demonstrating water sovereignty, household dignity, and watershed stewardship at the community scale.



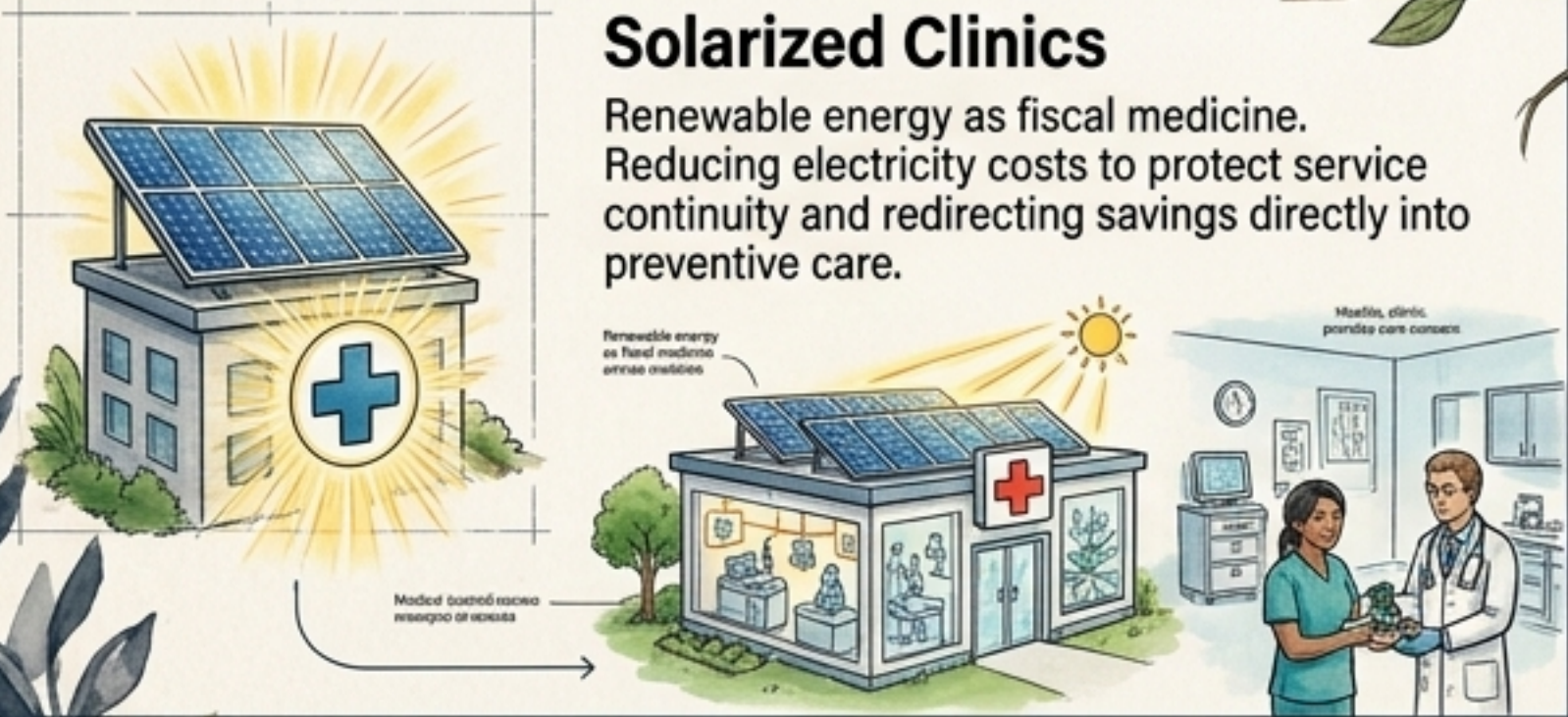
Healthy Local School Meals

Re-nesting food and health. Schools become anchor purchasers for local farmers, transforming a plate of food into a dashboard of the life-ground.



Solarized Clinics

Renewable energy as fiscal medicine. Reducing electricity costs to protect service continuity and redirecting savings directly into preventive care.



Green-Blue Youth Corps

Shifting youth from "future beneficiaries" to present co-builders. Paying young people to restore coastlines, map community assets, and repair the civil commons.



The Architecture of Accountability



The Life-Capital Test (Decision)

Evaluates whether a policy, project, or investment strengthens or weakens the life-ground before decisions are locked in.

Life-Capital Budgeting (Finance)

Evaluates public spending by asking: does this build durable capacity or generate hidden liabilities? Reframes maintenance and prevention as profound fiscal discipline.

The Dashboard (Shared Seeing)

A national mirror tracking life-ground conditions. Not a tool to punish ministries, but a public learning instrument blending quantitative metrics with lived narrative evidence.

Language, Emotioning, and Trust

Language that Closes Worlds

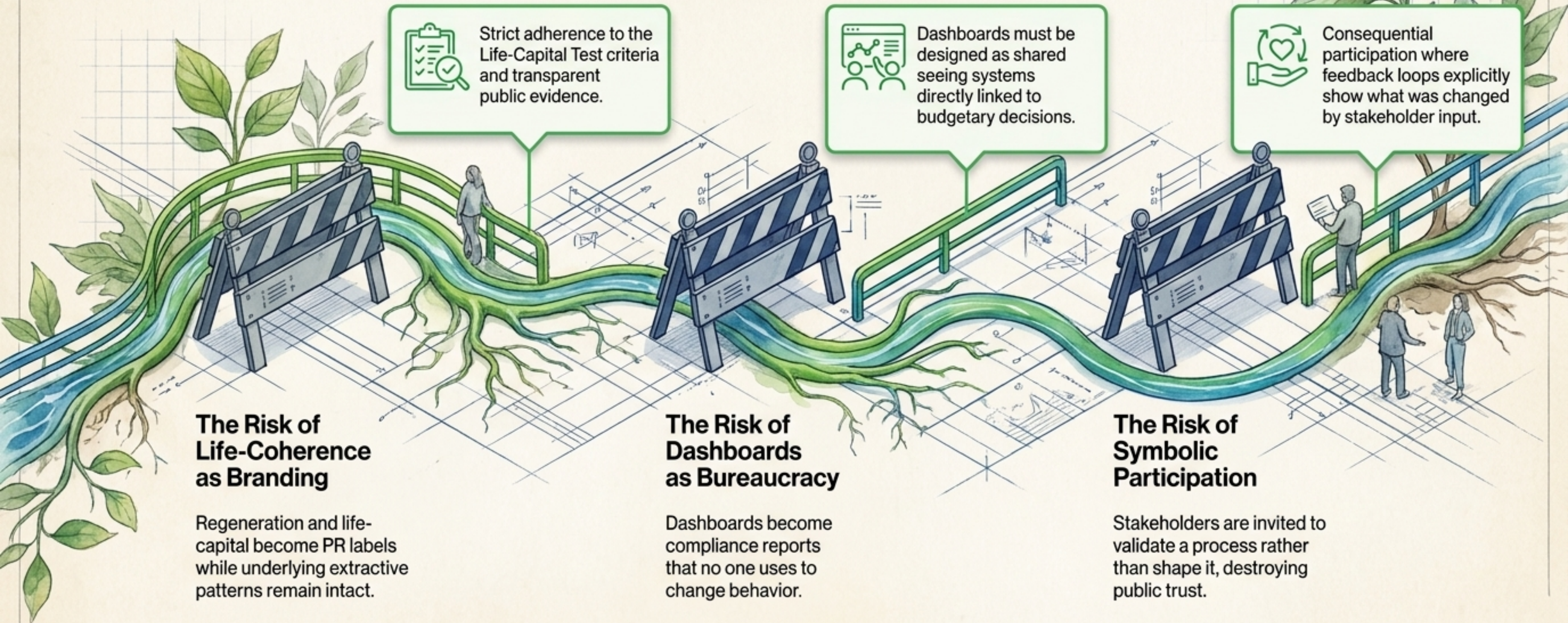
- **Begins with blame:** "Your sector is the problem."
- **Technocratic superiority:** "The data proves you wrong."
- **Mandates compliance:** "You need to align with the framework."
- **Abstracts the pain:** "This requires sacrifice."

Language that Opens Worlds

- **Begins with conserved concerns:** "What is becoming harder to sustain in your world?"
- **Mutual learning:** "What does the data show, and what does your lived experience add?"
- **Invites co-participation:** "How can this framework protect what matters to you?"
- **Anchors in love of place:** "What conditions of life must we protect for the next generation?"



Guardrails Against Capture



The Compossible World

A more beautiful life-coherent world cannot be delivered as a finished design to passive recipients. It is a compossible world—one brought forth through co-participation among legitimate others.

Final Principle: Life-coherent transformation becomes real only when people, institutions, and communities learn to coordinate around the regeneration of the life-ground they share.

