

Life-Coherent Attention

The Worlds We Bring Forth

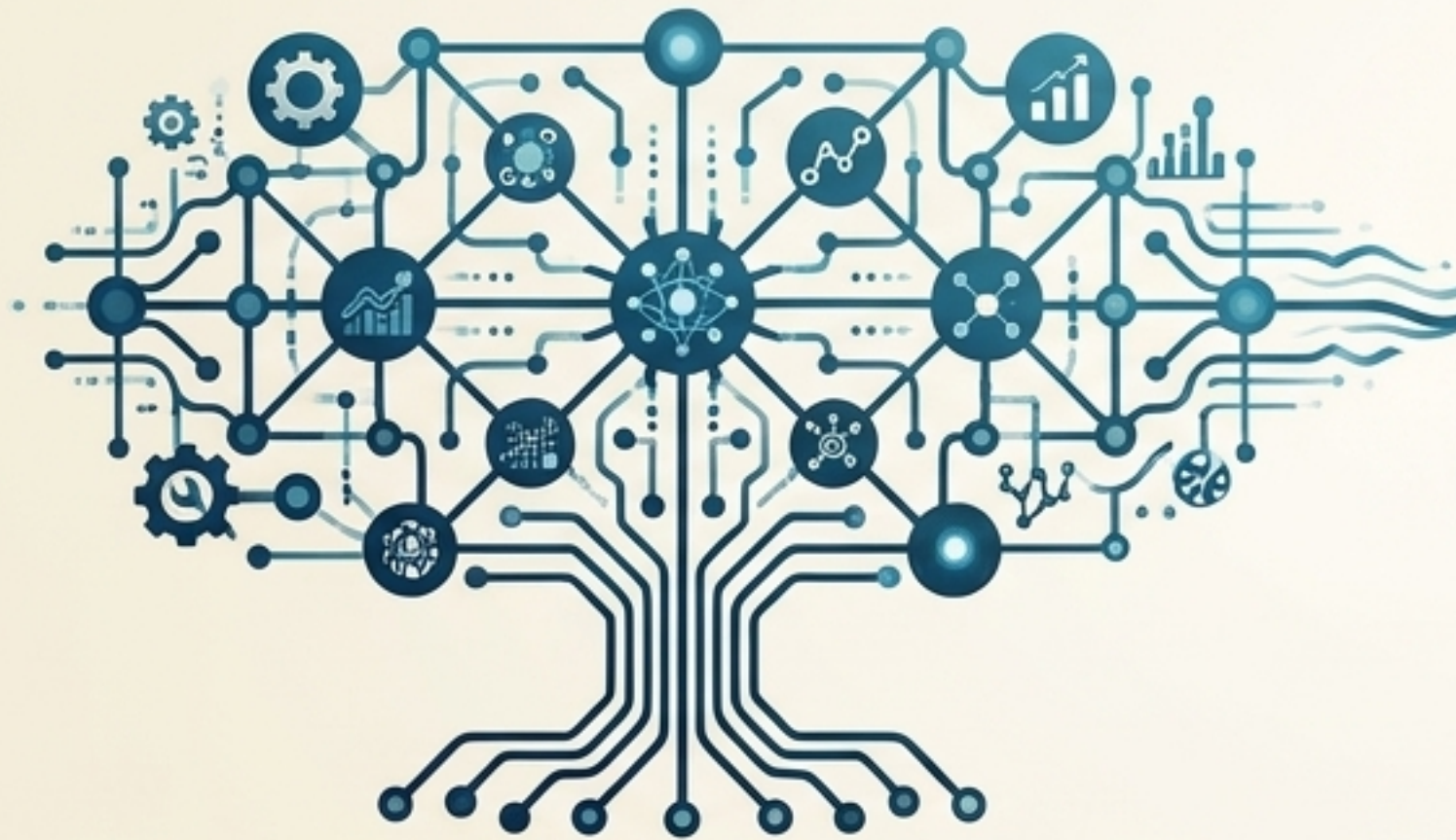


*A Synthesis of Language, Viability,
Mathematical Resonance,
and Artificial Intelligence.*

Attention Is Not All We Need

The Transformer architecture proved that meaning emerges from relational relevance. But computational attention alone is not care. Attention must be disciplined by viability.

Computational Attention



Domain of Focus

Computational AI (The Transformer Core, weighting relational relevance in formal architecture).

Optimizes For

Scaling, predictive generation, pattern recognition.

The Core Mechanism

Multi-head self-attention generating symbolic fluency.

Life-Coherent Attention



Domain of Focus

Life-Coherent Attention (Disciplined by viability, consequence, and love).

Optimizes For

Adaptive self-repair, margin restoration, legitimate coexistence.

The Core Mechanism

Answerability to the living substrate and real-world suffering.

The Diagnostic Inquiry

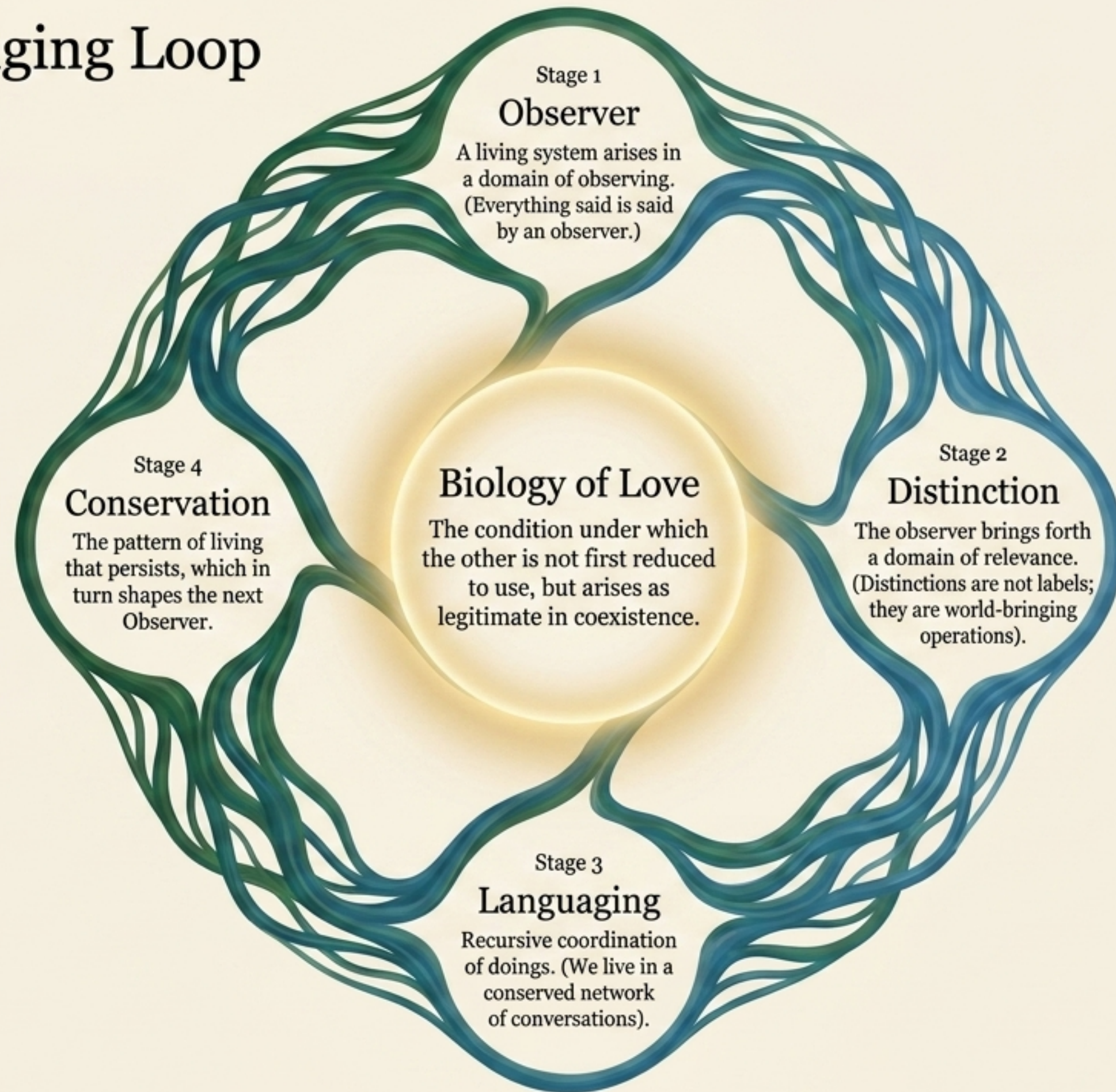
What manner of living is being conserved here, and does that conservation preserve or negate the conditions of living?

Margin: How much room remains for adaptive change?

Conservation: What is kept in place through our ongoing doings?

Possible Doings: What can actually be lived next?

The World-Bringing Loop



The Embodied Substrate: Coherence Physiology



- Material Substrate:** Fascia, ECM, cellular architecture
- Hydrated Interfaces:** Glycocalyx, boundaries, fluidic interstitium
- Force & Flow:** Mechanotransduction, shear stress, pressure
- Exchange Intelligence:** Microvascular and lymphatic coordination
- Boundary Intelligence:** Mast cell discernment and immune tolerance
- Energetic Governance:** Mitochondrial allocation and autonomic balance
- Recovery Trajectory:** Sleep, adaptation, and salogenesis

The living organism is not an assemblage of organs, but a nested coherence system.

The Pathology of Coherence

Defensive Lock-In

Definition: Protective coherence that becomes constraining. The organism cannot complete the transition from defense to recovery.

Mechanisms: Hyper-contraction, impaired flow, exchange failure, boundary alarm, and energy rigidity.

Result: Life-capacity narrows. The system survives, but participation collapses.

Salugenessis

Definition: The restoration of conditions for adaptive self-repair.

Mechanisms: Restoring tissue integrity, re-establishing flow, calming boundary alarm, and restoring margin.

Result: Renewed possible living. Defense is relinquished, parvaity, cotonges.

Defense is relinquished, allowing for creativity, relation, and growth.

Tri-Field Regulation: The Operator of Selfhood

**Proprioceptive
Form (Base)**
Can this body act?
Posture, fascial tension,
felt support.

**Interoceptive
State (Core)**
Do I have resources?
Breath, heart rate,
autonomic arousal,
energy.

**Exteroceptive
World (Environment)**
What kind of world am
I in? Social signals,
context, threat cues.

**Meaning
(Emergence)**
Stabilization.

Repair must proceed sequentially: Form → State → World → Meaning.
Meaning cannot sustainably transform while the organism remains physically dysregulated.

Radical Wholeness Without Totalization

“Every life-coherent whole must protect the legitimate relative autonomy of its parts.”

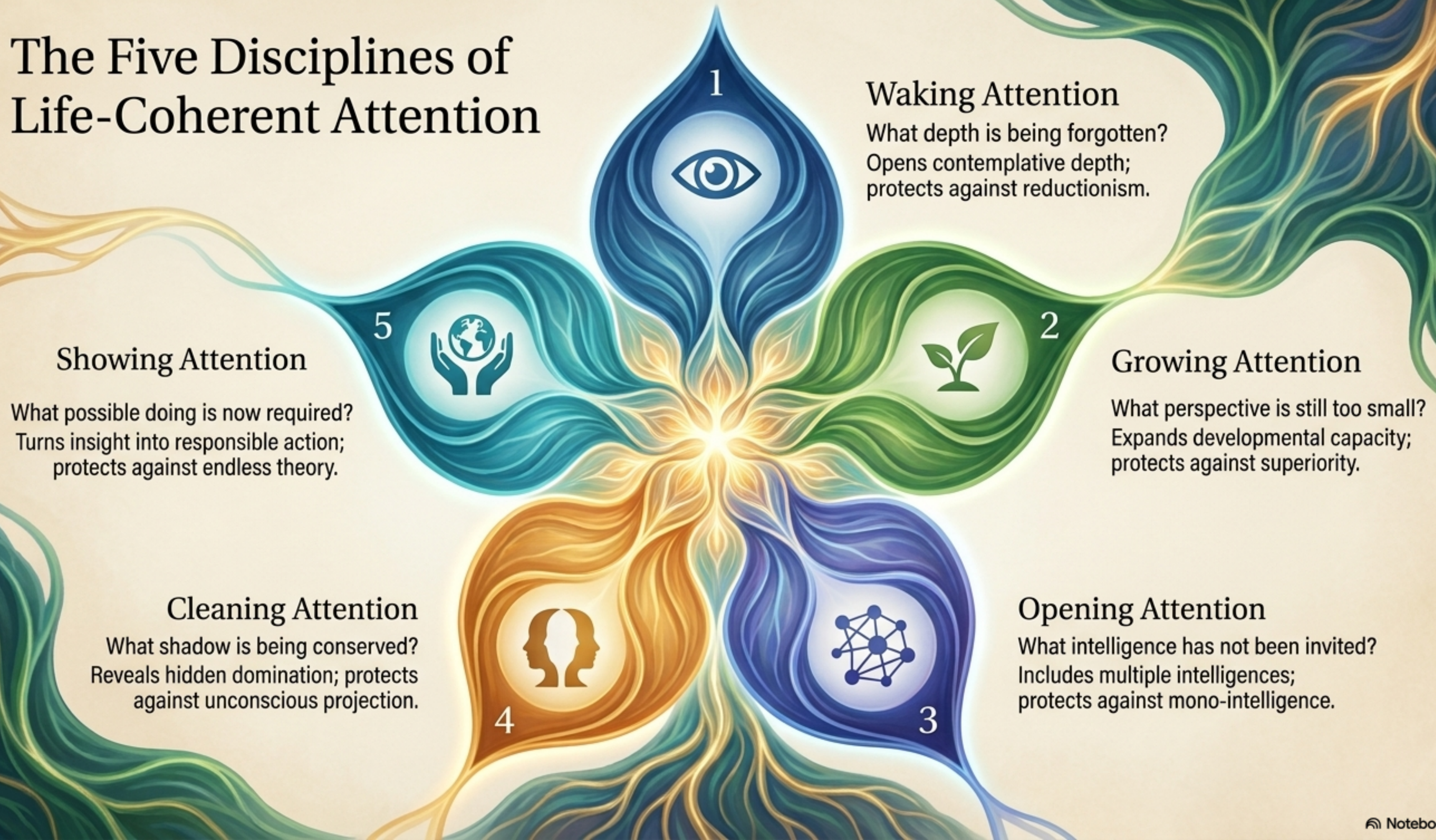


Pathology of Parts:
Blindness and isolation.

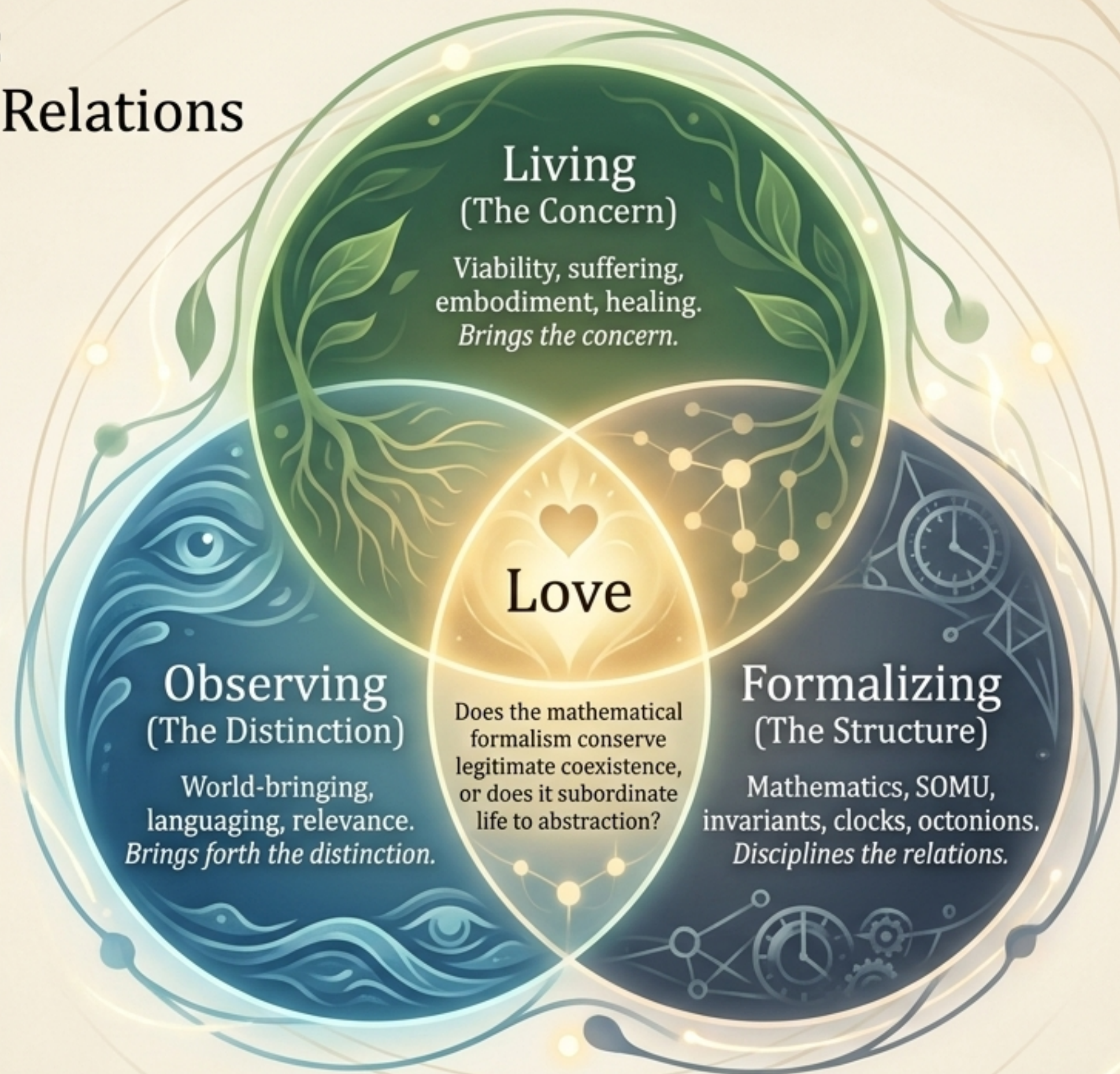
Pathology of Wholes:
Domination and erasure
of difference.

Non-Totalizing Coherence:
Dynamic relation without domination.

The Five Disciplines of Life-Coherent Attention



The Triple Look: Disciplining the Relations



The AI Pivot: From Fluency to Responsibility

The AI Capability

Large-scale language coordination,
holding distant conceptual dependencies
across vast symbolic spaces.

The Risk (Disembodied Fluency)

Simulating care without living concern;
optimizing attention without viability.

The Human Stewardship

Applying the Viability Pause. Asking: What
human responsibility must remain active?

AI is a language-participant,
not a living observer.
It can amplify attention,
but it cannot suffer the
consequences of the
worlds it helps bring forth.

It requires the discipline of
life-coherent
intelligence.

The Knowledge Commons: A Conversational Ecology

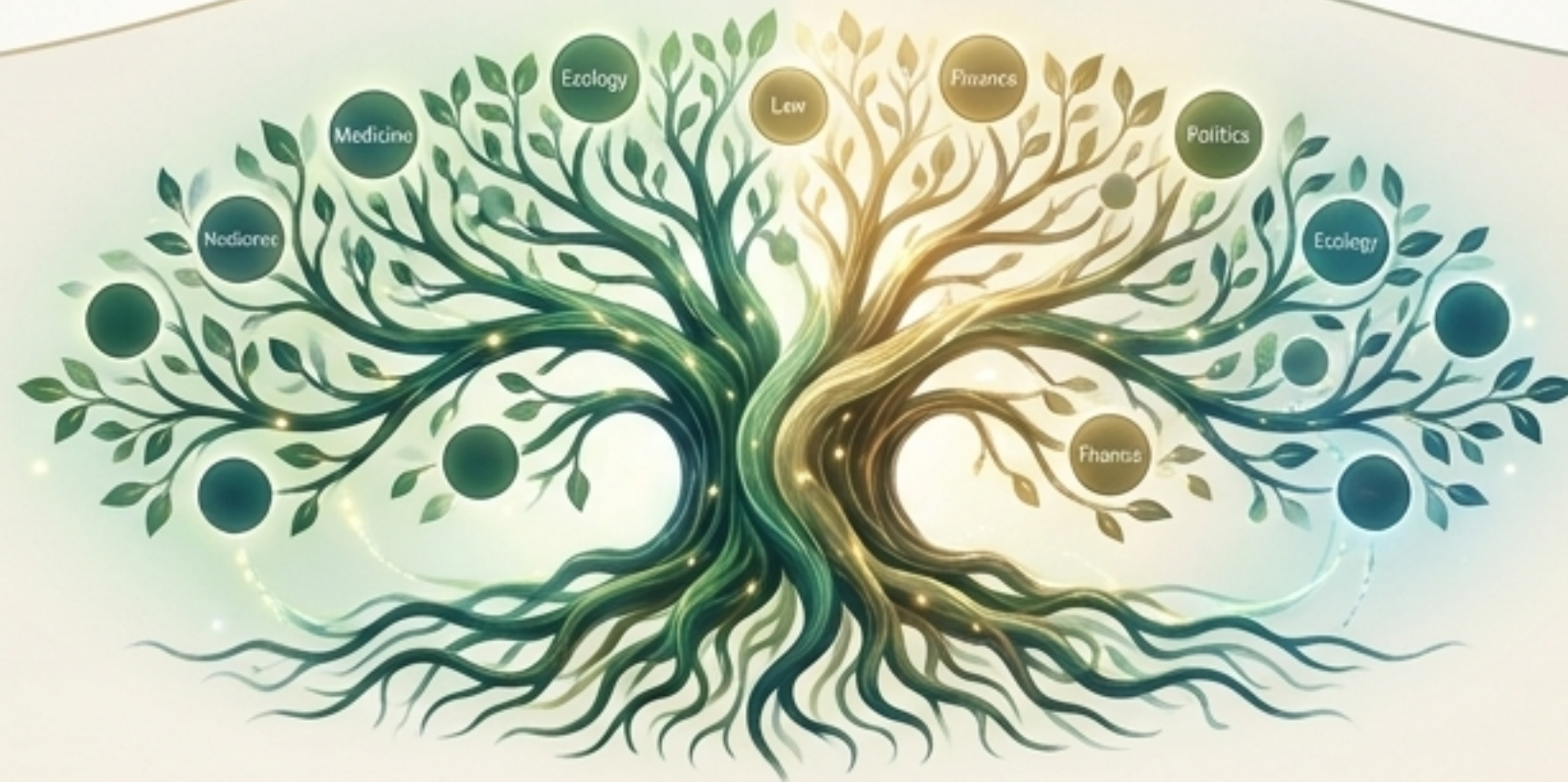
A commons does not merely store documents; it conserves cross-domain conversations (e.g., medicine speaking with economics, law with ecology) that mainstream institutions separate.

Chronological Archive



Linear, isolated, conserves sequence, enclosing knowledge.

Living Architecture



Relational, dynamic, conserves navigable meaning, supports epistemic justice.

Civilizational Diagnostics

Domain	Life-Incoherent Drift	Life-Coherent Question
Medicine	Fragmentation, pathway-only care.	What conditions allow this organism to recover?
Finance	Extraction, debt over real capacity.	Does this flow of money restore or consume living systems?
Law	Abstraction over living consequence.	Does this legal form protect the life-ground?
Politics	Domination and institutional self-preservation.	What ecological constraints are respected?
Technology	Attention capture and surveillance.	What human capacity does this tool strengthen or weaken?

Conserving the Inquiry

(The Return)

Attention brings forth relevance.

Distinction brings forth worlds.

Conversation conserves worlds.

Love judges whether those
worlds conserve living.

Possible Doings transform what
can be conserved next.

The deepest question is not “What is the final theory?”

The deepest question is:

What manner of living does this inquiry conserve?